

UK Office

Everest Biotech Ltd

Cherwell Innovation Centre
77 Heyford Park
Upper Heyford
Oxfordshire
OX25 5HD
UK

Enquiries:

info@everestbiotech.com

Sales:

sales@everestbiotech.com

Tech support:

support@everestbiotech.com

Tel: +44 (0)1869 238326

www.everestbiotech.com

**Research Use Only. Not for
diagnostic or therapeutic use.**

EB10585 - Goat Anti-NOX5 Antibody

Size: 100µg specific antibody in 200µl



Target Protein

Principal Names: NOX5, NADPH oxidase, EF-hand calcium binding domain 5, MGC149776, MGC149777, NADPH oxidase 5, OTTHUMP00000164443, OTTHUMP00000164444

Official Symbol: NOX5

Accession Number(s): NP_078781.3; NP_001171708.1; NP_001171709.1

Human GeneID(s): [79400](#)

Important Comments: This antibody is expected to recognize all reported isoforms (NP_078781.3; NP_001171708.1; NP_001171709.1).

Immunogen

Peptide with sequence C-EWHPFTISSAPEQKD, from the internal region of the protein sequence according to NP_078781.3; NP_001171708.1; NP_001171709.1.

Please note the [peptide](#) is available for sale.

Purification and Storage

Purified from goat serum by ammonium sulphate precipitation followed by antigen affinity chromatography using the immunizing peptide.

Supplied at 0.5 mg/ml in Tris saline, 0.02% sodium azide, pH7.3 with 0.5% bovine serum albumin.

Aliquot and store at -20°C. Minimize freezing and thawing.

Applications Tested

Peptide ELISA: antibody detection limit dilution 1:8000.

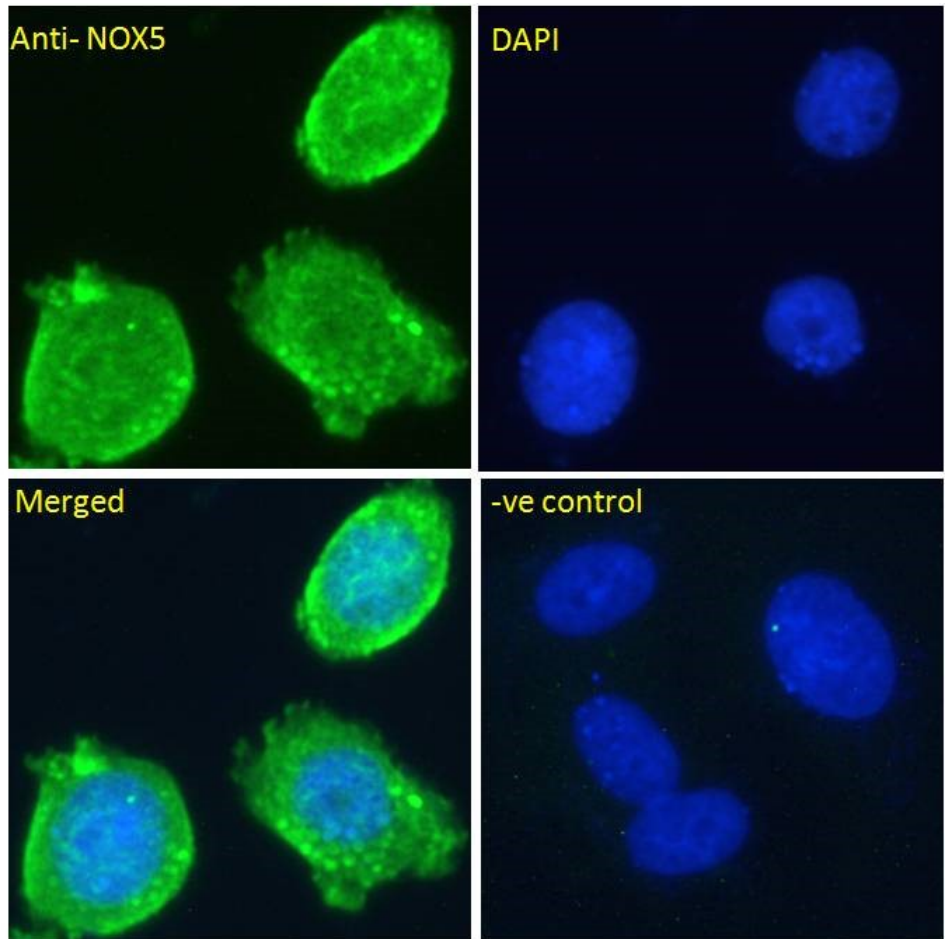
Western blot: Approx 90kDa band observed in Human Testis lysates (calculated MW of 86.4kDa according to NP_078781.3). Recommended concentration: 0.5-2µg/ml. Primary incubation 1 hour at room temperature.

Immunofluorescence: Strong expression of the protein seen in the plasma membrane and cytoplasm of HeLa and MCF7 cells. Recommended concentration: 10ug/ml.

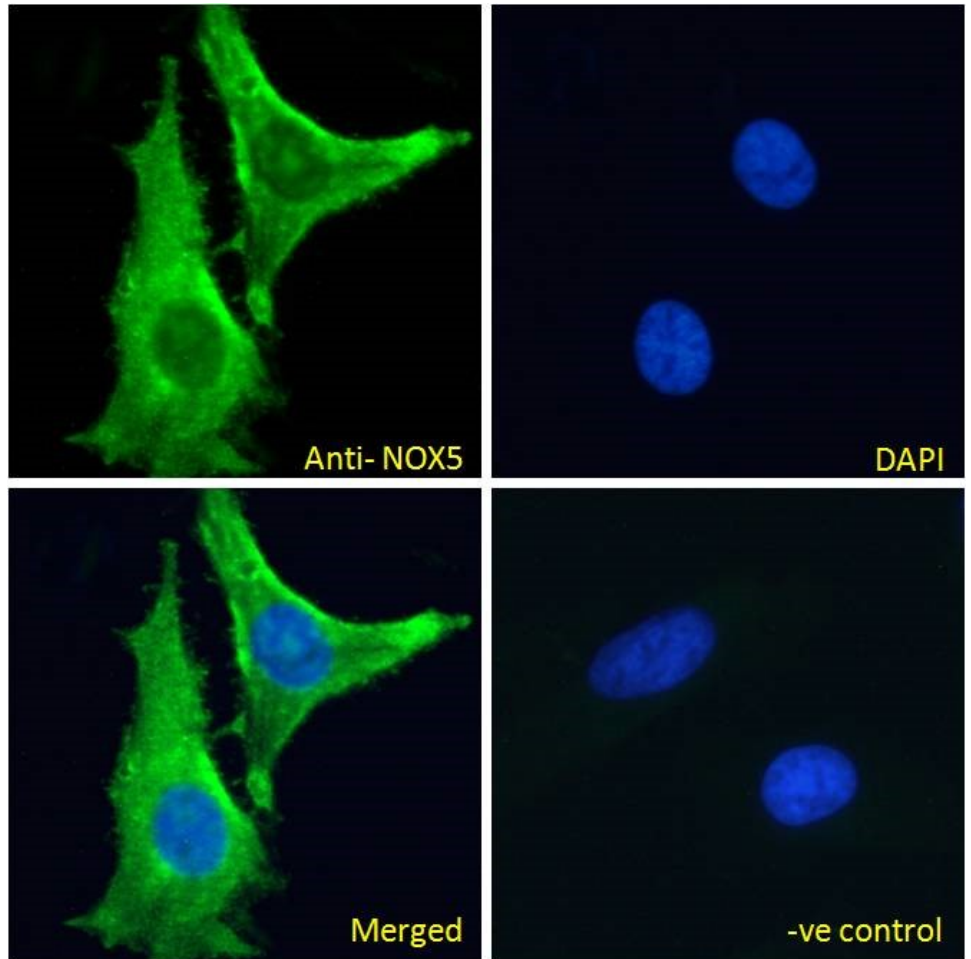
Species Reactivity

Tested: Human

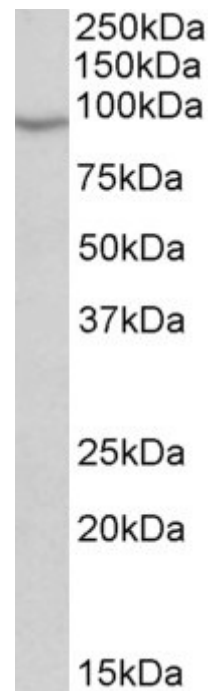
Expected from sequence similarity: Human, Dog, Cow



EB10585 Immunofluorescence analysis of paraformaldehyde fixed MCF7 cells, permeabilized with 0.15% Triton. Primary incubation 1hr (10ug/ml) followed by Alexa Fluor 488 secondary antibody (2ug/ml), showing staining within the cytoplasm and plasma membrane . The nuclear stain is DAPI (blue). Negative control: Unimmunized goat IgG (10ug/ml) followed by Alexa Fluor 488 secondary antibody (2ug/ml).



EB10585 Immunofluorescence analysis of paraformaldehyde fixed HeLa cells, permeabilized with 0.15% Triton. Primary incubation 1hr (10ug/ml) followed by Alexa Fluor 488 secondary antibody (2ug/ml), showing staining within the cytoplasm and plasma membrane . The nuclear stain is DAPI (blue). Negative control: Unimmunized goat IgG (10ug/ml) followed by Alexa Fluor 488 secondary antibody (2ug/ml).



EB10585 (0.5µg/ml) staining of Human Testis lysate (35µg protein in RIPA buffer). Detected by chemiluminescence.