



## UK Office

### Everest Biotech Ltd

Cherwell Innovation Centre  
77 Heyford Park  
Upper Heyford  
Oxfordshire  
OX25 5HD  
UK

Enquiries:

[info@everestbiotech.com](mailto:info@everestbiotech.com)

Sales:

[sales@everestbiotech.com](mailto:sales@everestbiotech.com)

Tech support:

[support@everestbiotech.com](mailto:support@everestbiotech.com)

Tel: +44 (0)1869 238326

Fax: +44 (0)1869 238327

## US Office

### Everest Biotech c/o Abcore

405 Maple Street, Suite A106  
Ramona,  
CA 92065  
USA

Inquiries:

[info@everestbiotech.com](mailto:info@everestbiotech.com)

Sales:

[usasales@everestbiotech.com](mailto:usasales@everestbiotech.com)

Tech support:

[support@everestbiotech.com](mailto:support@everestbiotech.com)

Tel: 888-320-4628 (toll-free)

Fax: 888-841-9041

[www.everestbiotech.com](http://www.everestbiotech.com)

**Research Use Only. Not for  
diagnostic or therapeutic use.**

## EB06296 - Goat Anti-NOXO1 Antibody

Size: 100µg specific antibody in 200µl



### Target Protein

**Principal Names:** NOXO1, P41NOX, P41NOXA, P41NOXB, P41NOXC, MGC20258, NADPH oxidase organizer 1, regulatory protein P41NOX, SH3PXD5, SNX28, Nox organizer 1

**Official Symbol:** NOXO1

**Accession Number(s):** NP\_653204.1; NP\_751907.1; NP\_751907.1

**Human GeneID(s):** [124056](#)

**Important Comments:** This antibody is expected to recognise all three reported isoforms (as represented by NP\_653204.1, NP\_751907.1 and NP\_751908.1).

### Immunogen

Peptide with sequence RGCVDSPHPPTTEQ, from the C Terminus of the protein sequence according to NP\_653204.1; NP\_751907.1; NP\_751907.1.

Please note the [peptide](#) is available for sale.

### Purification and Storage

Purified from goat serum by ammonium sulphate precipitation followed by antigen affinity chromatography using the immunizing peptide.

Supplied at 0.5 mg/ml in Tris saline, 0.02% sodium azide, pH7.3 with 0.5% bovine serum albumin.

Aliquot and store at -20°C. Minimize freezing and thawing.

### Applications Tested

**Peptide ELISA:** antibody detection limit dilution 1:16000.

**Western blot:** Preliminary experiments gave no signal but low background in Hela and Human Heart lysates at up to 1µg/ml.

**IHC:** In paraffin embedded Human Kidney Cortex shows cytoplasmic stain in epithelial cells of some PCT. Recommended concentration, 10-20µg/ml.

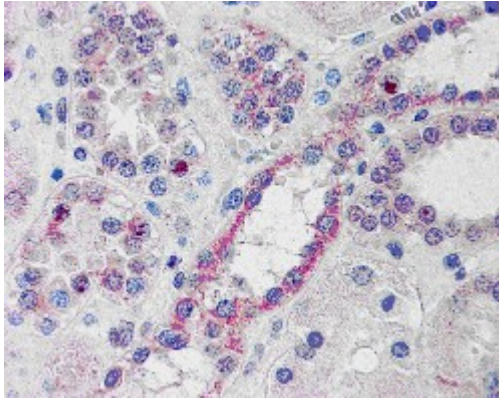
### Species Reactivity

**Tested:** Human

**Expected from sequence similarity:** Human

### Specific Reference

PMID: 0



EB06296 (10µg/ml) staining of paraffin embedded Human Kidney. Steamed antigen retrieval with citrate buffer pH 6, AP-staining.