



## International Office

### Everest Biotech Ltd

Vector Laboratories, Inc.  
6737 Mowry Ave  
Newark, CA 94560  
United States

Customer Service:

[customerservice@vectorlabs.com](mailto:customerservice@vectorlabs.com)

Technical Service:

[technical@vectorlabs.com](mailto:technical@vectorlabs.com)

Tel: +1 (800) 227-6666

[www.everestbiotech.com](http://www.everestbiotech.com)

**Research Use Only. Not for  
diagnostic or therapeutic use.**

## EB10804 - Goat Anti-Npc2 (mouse) (aa21-33) Antibody

Size: 100µg specific antibody in 200µl



### Target Protein

**Principal Names:** Npc2, Niemann-Pick disease, type C2, 2700012J19Rik, AA408070, AU045843, HE1, epididymal secretory protein E1, mE1, niemann Pick type C2 protein homolog

**Official Symbol:** Npc2

**Accession Number(s):** NP\_075898.1

**Non-Human GeneID(s):** 67963 (mouse), 286898 (rat)

### Immunogen

Peptide with sequence QAEPLHFKDCGSK, from the internal region of the protein sequence according to NP\_075898.1.

Please note the [peptide](#) is available for sale.

### Purification and Storage

Purified from goat serum by ammonium sulphate precipitation followed by antigen affinity chromatography using the immunizing peptide.

Supplied at 0.5 mg/ml in Tris saline, 0.02% sodium azide, pH7.3 with 0.5% bovine serum albumin.

Aliquot and store at -20°C. Minimize freezing and thawing.

### Applications Tested

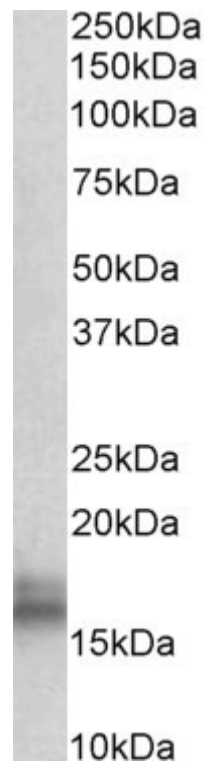
**Peptide ELISA:** antibody detection limit dilution 1:32000.

**Western blot:** Approx 16kDa band observed in Mouse Kidney lysates (calculated MW of 16.4kDa according to NP\_006423.1). Recommended concentration: 0.1-0.3µg/ml.

### Species Reactivity

**Tested:** Mouse

**Expected from sequence similarity:** Mouse, Rat



EB10804 (0.1µg/ml) staining of Mouse Kidney lysate (35µg protein in RIPA buffer). Primary incubation was 1 hour. Detected by chemiluminescence.