



## UK Office

### Everest Biotech Ltd

Cherwell Innovation Centre  
77 Heyford Park  
Upper Heyford  
Oxfordshire  
OX25 5HD  
UK

Enquiries:

[info@everestbiotech.com](mailto:info@everestbiotech.com)

Sales:

[sales@everestbiotech.com](mailto:sales@everestbiotech.com)

Tech support:

[support@everestbiotech.com](mailto:support@everestbiotech.com)

Tel: +44 (0)1869 238326

[www.everestbiotech.com](http://www.everestbiotech.com)

**Research Use Only. Not for  
diagnostic or therapeutic use.**

## EB12149 - Goat Anti-NPHS2 / SRN1 Antibody

Size: 100µg specific antibody in 200µl



### Target Protein

**Principal Names:** NPHS2, nephrosis 2, idiopathic, steroid-resistant (podocin), PDCN, SRN1, podocin

**Official Symbol:** NPHS2

**Accession Number(s):** NP\_055440.1

**Human GeneID(s):** [7827](#)

### Immunogen

Peptide with sequence C-SPSKPVEPLNPKK, from the C Terminus of the protein sequence according to NP\_055440.1.

Please note the [peptide](#) is available for sale.

### Purification and Storage

Purified from goat serum by ammonium sulphate precipitation followed by antigen affinity chromatography using the immunizing peptide.

Supplied at 0.5 mg/ml in Tris saline, 0.02% sodium azide, pH7.3 with 0.5% bovine serum albumin.

Aliquot and store at -20°C. Minimize freezing and thawing.

### Applications Tested

**Peptide ELISA:** antibody detection limit dilution 1:64000.

**Western blot:** Approx 42-45kDa band observed in Human and Mouse Kidney lysates (calculated MW of 42.2kDa according to Human NP\_055440.1 and Mouse NP\_569723.1). Recommended concentration: 0.5-2µg/ml. Primary incubation 1 hour at room temperature.

### Species Reactivity

**Tested:** Human, Mouse

**Expected from sequence similarity:** Human, Mouse, Pig, Cow

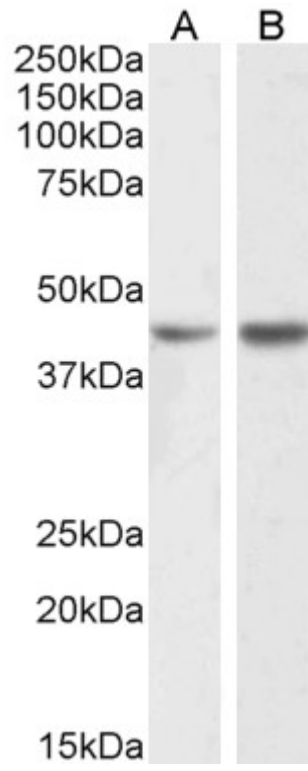
### Specific Reference

**This antibody (previous batch) has been successfully used in IF on Mouse:**

Pepe M. Ekulu et al.

Novel Human Podocyte Cell Model Carrying G2/G2 APOL1 High-Risk Genotype Cells. 2021 Aug; 10(8): 1914.

PMID: 34440683



EB12149 (1 $\mu$ g/ml) staining of Human (A) and Mouse (B) Kidney lysate (35 $\mu$ g protein in RIPA buffer). Detected by chemiluminescence.