



## UK Office

### Everest Biotech Ltd

Cherwell Innovation Centre  
77 Heyford Park  
Upper Heyford  
Oxfordshire  
OX25 5HD  
UK

Enquiries:

[info@everestbiotech.com](mailto:info@everestbiotech.com)

Sales:

[sales@everestbiotech.com](mailto:sales@everestbiotech.com)

Tech support:

[support@everestbiotech.com](mailto:support@everestbiotech.com)

Tel: +44 (0)1869 238326

[www.everestbiotech.com](http://www.everestbiotech.com)

**Research Use Only. Not for  
diagnostic or therapeutic use.**

## EB11190 - Goat Anti-NPR3 (aa520-533) Antibody

Size: 100µg specific antibody in 200µl



### Target Protein

**Principal Names:** ANP-C, ANPRC, ANPR-C, atrial natriuretic peptide clearance receptor, atrial natriuretic peptide receptor 3, atrial natriuretic peptide receptor type C, GUCY2B, natriuretic peptide receptor C/guanylate cyclase C (atrionatriuretic peptide receptor C), NPRC, NPR-C, OTTHUMP00000197048, OTTHUMP00000220980, NPR3

**Official Symbol:** NPR3

**Accession Number(s):** NP\_000899.1

**Human GeneID(s):** [4883](#)

**Non-Human GeneID(s):** 18162 (mouse), 25339 (rat)

**Important Comments:** The immunizing peptide represents the cytoplasmic part of the protein.

### Immunogen

Peptide with sequence C-HRELREDSIRSHFS, from the C Terminus of the protein sequence according to NP\_000899.1.

Please note the [peptide](#) is available for sale.

### Purification and Storage

Purified from goat serum by ammonium sulphate precipitation followed by antigen affinity chromatography using the immunizing peptide.

Supplied at 0.5 mg/ml in Tris saline, 0.02% sodium azide, pH7.3 with 0.5% bovine serum albumin.

Aliquot and store at -20°C. Minimize freezing and thawing.

### Applications Tested

**Peptide ELISA:** antibody detection limit dilution 1:16000.

**Western blot:** Approx 52kDa band observed in Human Placenta lysates (calculated MW of 59.8kDa according to NP\_000899.1). Recommended concentration: 1-3µg/ml.

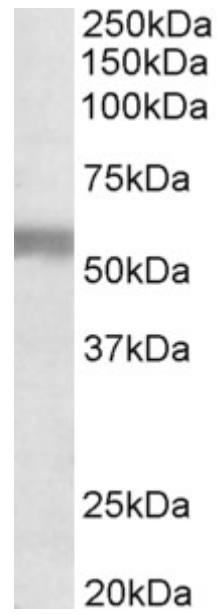
**IHC:** In paraffin embedded Human Kidney shows staining of brush borders in select PCT. Recommended concentration: 2-4µg/ml. Paraffin embedded Human Prostate.

Recommended concentration: 10µg/ml.

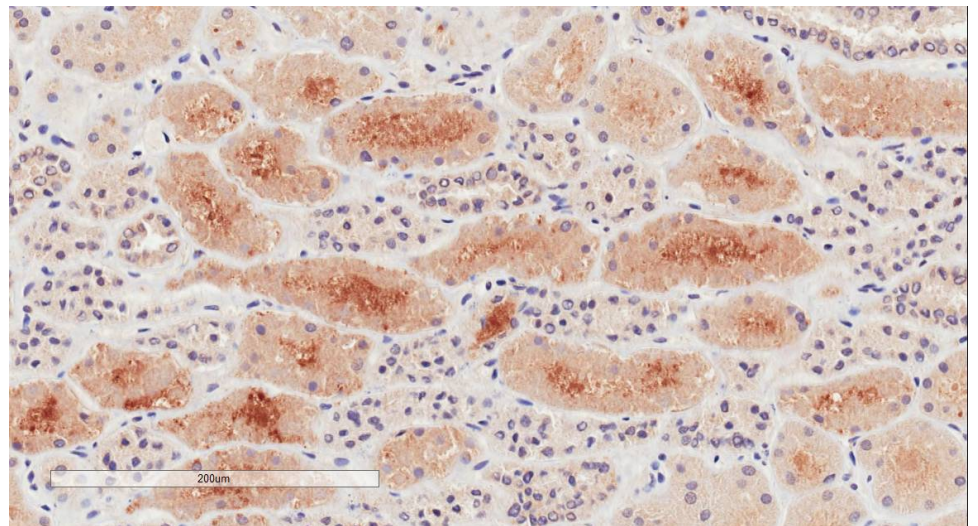
### Species Reactivity

**Tested:** Human

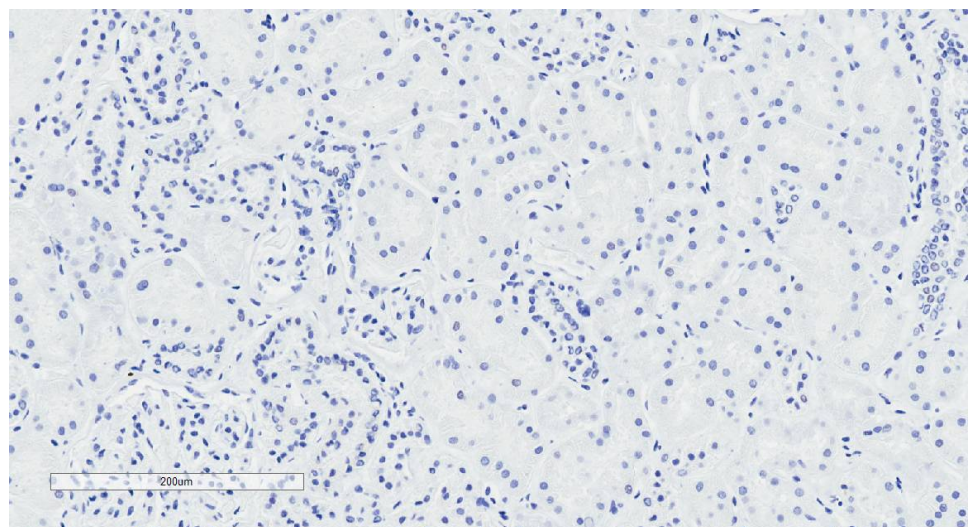
**Expected from sequence similarity:** Human, Mouse, Rat, Dog, Pig, Cow



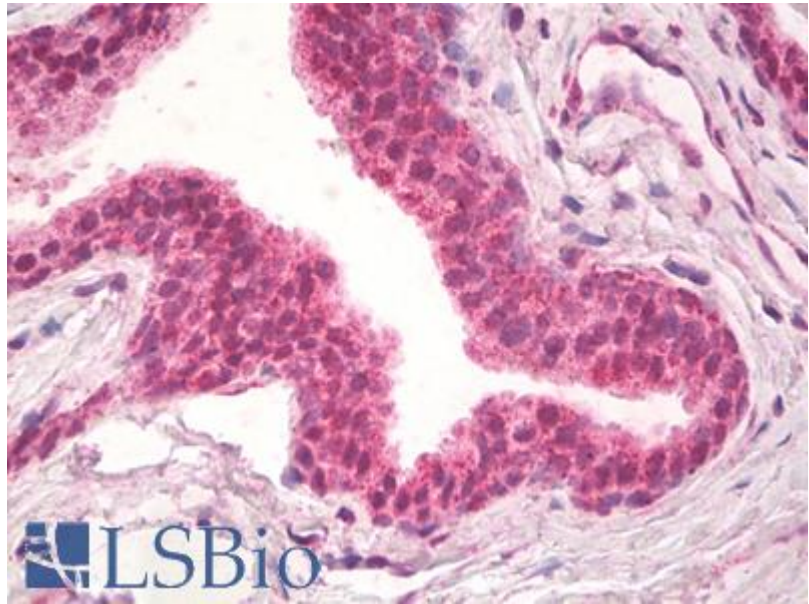
EB11190 (1 $\mu$ g/ml) staining of Human Placenta lysate (35 $\mu$ g protein in RIPA buffer). Primary incubation was 1 hour. Detected by chemiluminescence.



EB11190 (2 $\mu$ g/ml) staining of paraffin embedded Human Kidney. Microwaved antigen retrieval with citrate buffer pH 6, HRP-staining.



EB11190 Negative Control showing staining of paraffin embedded Human Kidney, with no primary antibody.



EB11190 (10 $\mu$ g/ml) staining of paraffin embedded Human Prostate. Steamed antigen retrieval with citrate buffer pH 6, AP-staining.