

## UK Office

### Everest Biotech Ltd

Cherwell Innovation Centre  
77 Heyford Park  
Upper Heyford  
Oxfordshire  
OX25 5HD  
UK

Enquiries:

[info@everestbiotech.com](mailto:info@everestbiotech.com)

Sales:

[sales@everestbiotech.com](mailto:sales@everestbiotech.com)

Tech support:

[support@everestbiotech.com](mailto:support@everestbiotech.com)

Tel: +44 (0)1869 238326

[www.everestbiotech.com](http://www.everestbiotech.com)

**Research Use Only. Not for  
diagnostic or therapeutic use.**

## EB05370 - Goat Anti-NQO1 Antibody

Size: 100µg specific antibody in 200µl



### Target Protein

**Principal Names:** NQO1, NAD(P)H dehydrogenase, quinone 1, DTD, QR1, DHQU, DIA4, NMOR1, NMORI, diaphorase-4, diaphorase (NADH/NADPH), diaphorase (NADH/NADPH) (cytochrome b-5 reductase), NAD(P)H:menadione oxidoreductase 1, dioxin-inducible 1, DT-diaphorase, NAD(P)H menadione oxidoreductase 1, dioxin-inducible, NAD(P)H:Quinone acceptor oxidoreductase type 1, NAD(P)H menadione oxidoreductase 1, dioxin-inducible, NAD(P)H:quinone oxidoreductase, azoreductase, diaphorase (NADH/NADPH) (cytochrome b-5 reductase), dioxin-inducible 1, menadione reductase, phyloquinone reductase, quinone reductase 1

**Official Symbol:** NQO1

**Accession Number(s):** NP\_000894.1; NP\_001020604.1; NP\_001020605.1

**Human GeneID(s):** [1728](#)

**Non-Human GeneID(s):** 18104 (mouse)

**Important Comments:** This products is expected to recognize all three reported isoforms (NP\_000894.1, NP\_001020604.1 and NP\_001020605.1).

### Immunogen

Peptide with sequence C-SIPTDNQIKARK, from the C Terminus of the protein sequence according to NP\_000894.1; NP\_001020604.1; NP\_001020605.1.

Please note the [peptide](#) is available for sale.

### Purification and Storage

Purified from goat serum by ammonium sulphate precipitation followed by antigen affinity chromatography using the immunizing peptide.

Supplied at 0.5 mg/ml in Tris saline, 0.02% sodium azide, pH7.3 with 0.5% bovine serum albumin.

Aliquot and store at -20°C. Minimize freezing and thawing.

### Applications Tested

**Peptide ELISA:** antibody detection limit dilution 1:64000.

**Western blot:** Approx. 30kDa band observed in lysates of cell lines U251 and HepG2 and in Human Kidney, Lung and Duodenum lysates, and approx. 30-32kDa band in Rat Kidney, Lung and Duodenum lysates (calculated MW of 30.9kDa according to Human NP\_000894.1 and Rat NP\_058696.2). Recommended concentration: 0.1-0.3µg/ml. Primary incubation 1 hour at room temperature.

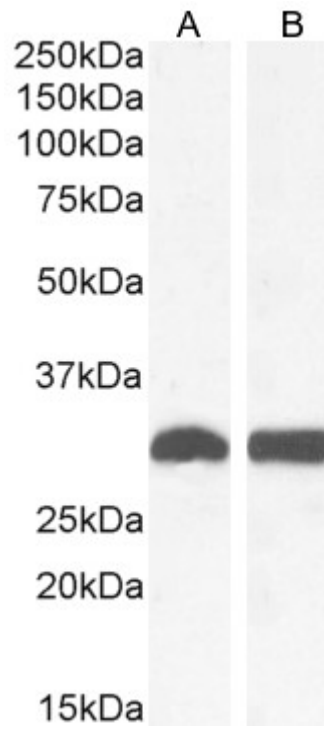
**IHC:** In paraffin embedded Human Kidney shows specific staining of the glomeruli. Recommended concentration: 2-4µg/ml.

**Immunofluorescence:** Expression of the protein seen in the cytoplasm and nucleus of HepG2 cells. Recommended concentration: 10µg/ml.

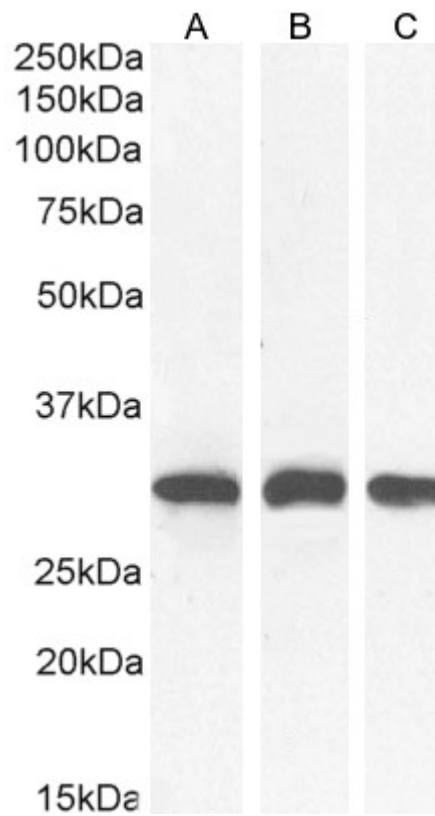
### Species Reactivity

**Tested:** Human, Rat

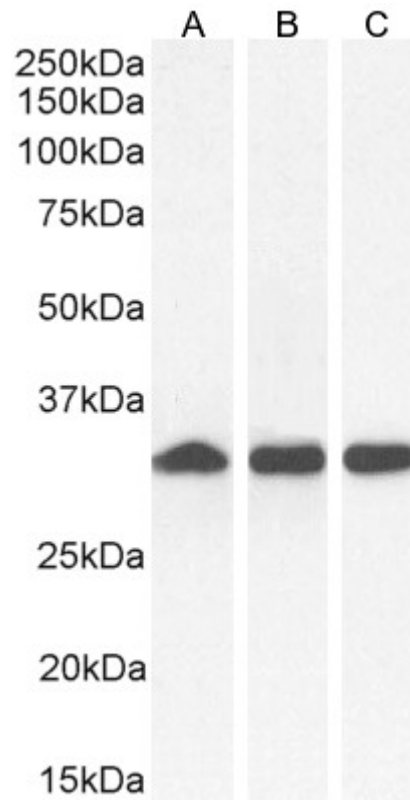
**Expected from sequence similarity:** Human, Rat, Dog, Pig



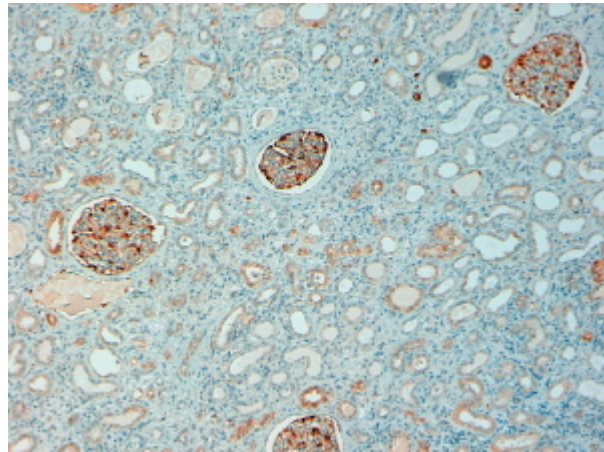
EB05370 (0.3 $\mu$ g/ml) staining of U251 (A) and HepG2 (B) cell lysate. (35 $\mu$ g protein in RIPA buffer). Detected by chemiluminescence.



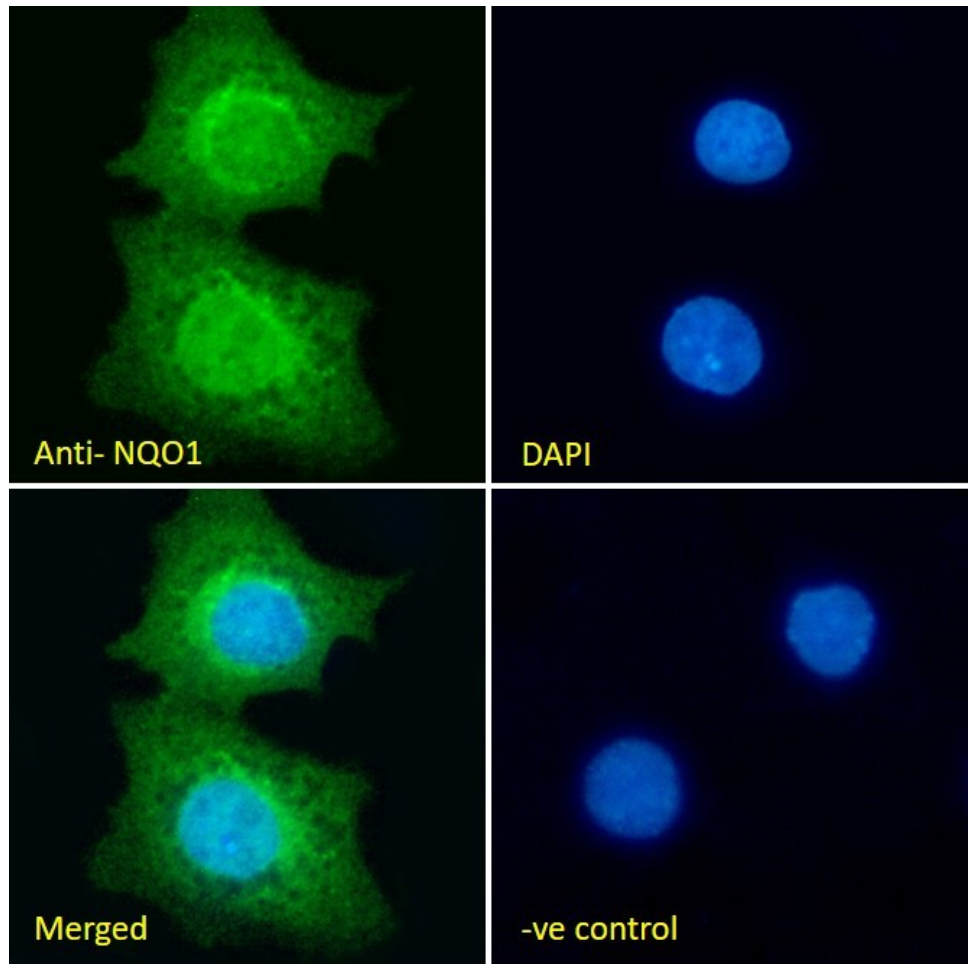
EB05370 (0.3 $\mu$ g/ml) staining of Human Kidney (A), Lung (B) and Duodenum (C) lysate. (35 $\mu$ g protein in RIPA buffer). Detected by chemiluminescence



EB05370 (0.3 $\mu$ g/ml) staining of Rat Kidney (A), Lung (B) and Duodenum (C) lysate. (35 $\mu$ g protein in RIPA buffer). Detected by chemiluminescence.



EB05370 (2 $\mu$ g/ml) staining of paraffin embedded Human Kidney. Steamed antigen retrieval with citrate buffer pH 6, AP-staining.



EB05370 Immunofluorescence analysis of paraformaldehyde fixed HepG2 cells, permeabilized with 0.15% Triton. Primary incubation 1hr (10ug/ml) followed by Alexa Fluor 488 secondary antibody (2ug/ml), showing cytoplasmic and some nuclear staining. The nuclear stain is DAPI (blue). Negative control: Unimmunized goat IgG (10ug/ml) followed by Alexa Fluor 488 secondary antibody (2ug/ml).