



International Office

Everest Biotech Ltd

Vector Laboratories, Inc.
6737 Mowry Ave
Newark, CA 94560
United States

Customer Service:

customerservice@vectorlabs.com

Technical Service:

technical@vectorlabs.com

Tel: +1 (800) 227-6666

www.everestbiotech.com

**Research Use Only. Not for
diagnostic or therapeutic use.**

EB10772 - Goat Anti-NQO1 (isoform a) Antibody

Size: 100µg specific antibody in 200µl



Target Protein

Principal Names: NQO1, NAD(P)H dehydrogenase, quinone 1, DHQU, DIA4, DTD, NMOR1, NMORI, QR1, DT-diaphorase, NAD(P)H:Quinone acceptor oxidoreductase type 1, NAD(P)H:menadione oxidoreductase 1, NAD(P)H:quinone oxidoreductase 1, NAD(P)H:qui

Official Symbol: NQO1

Accession Number(s): NP_000894.1

Human GeneID(s): [1728](#)

Important Comments: This antibody is expected to recognize reported isoform a (NP_000894.1) only.

Immunogen

Peptide with sequence C-DKGPFRSKAVLS, from the internal region of the protein sequence according to NP_000894.1.

Please note the [peptide](#) is available for sale.

Purification and Storage

Purified from goat serum by ammonium sulphate precipitation followed by antigen affinity chromatography using the immunizing peptide.

Supplied at 0.5 mg/ml in Tris saline, 0.02% sodium azide, pH7.3 with 0.5% bovine serum albumin.

Aliquot and store at -20°C. Minimize freezing and thawing.

Applications Tested

Peptide ELISA: antibody detection limit dilution 1:32000.

Western blot: Approx 30kDa band observed in Human Kidney lysates (calculated MW of 30.9kDa according to NP_000894.1). Recommended concentration: 0.3-1µg/ml. Primary incubation was 1 hour.

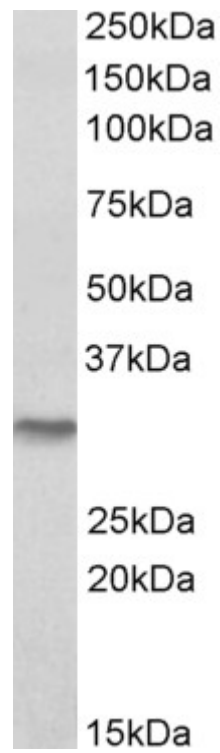
IHC: Paraffin embedded Human Small Intestine. Recommended concentration: 3.75µg/ml.

Immunofluorescence: Strong expression of the protein seen in the cytoplasm of HepG2 cells. Recommended concentration: 5µg/ml.

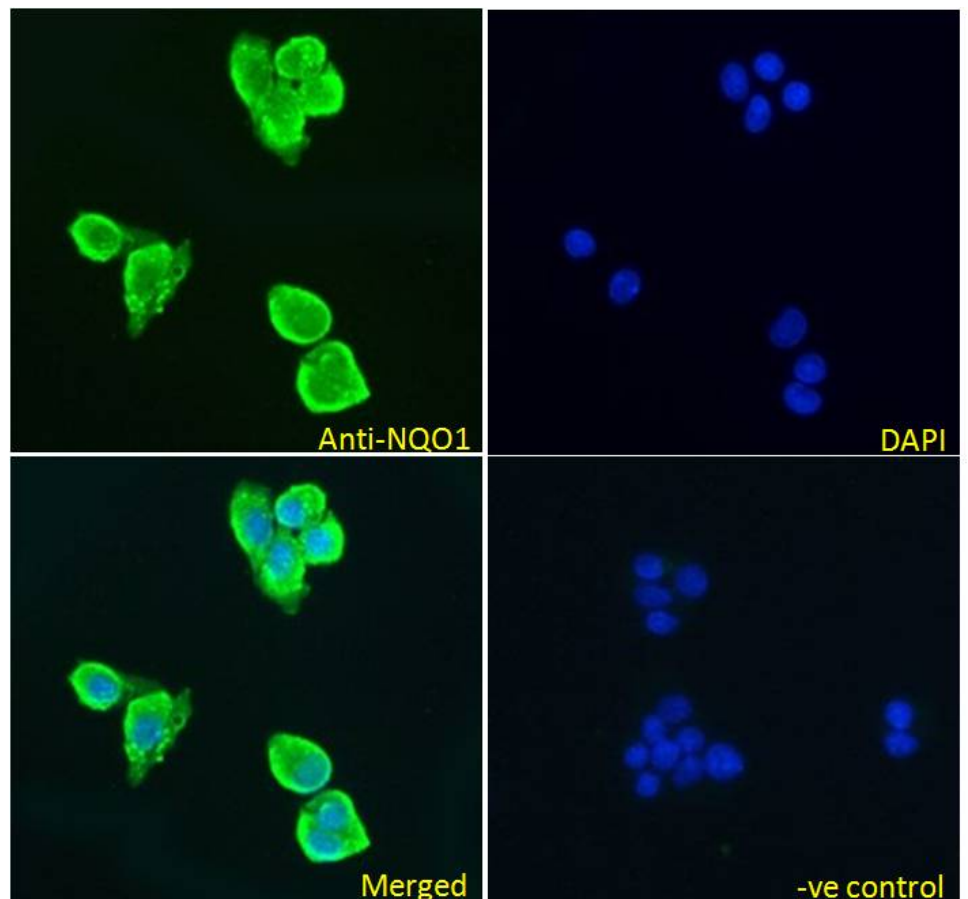
Species Reactivity

Tested: Human

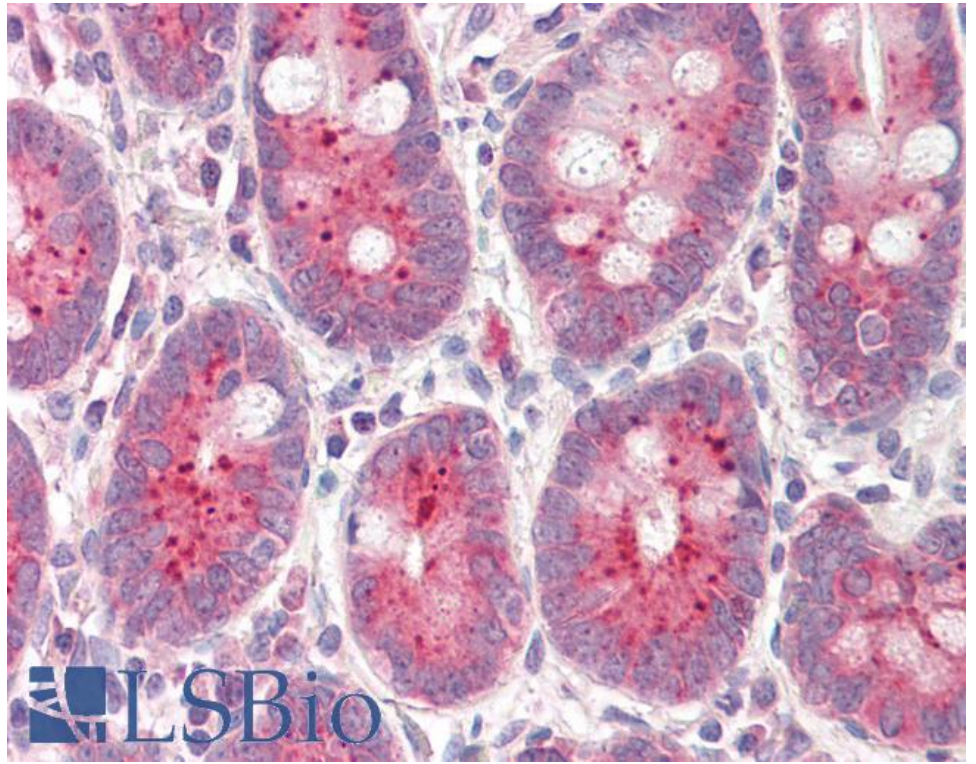
Expected from sequence similarity: Human, Dog, Pig, Cow



EB10772 (0.3µg/ml) staining of Human Kidney lysate (35µg protein in RIPA buffer). Detected by chemiluminescence.



EB10772 Immunofluorescence analysis of paraformaldehyde fixed HepG2 cells, permeabilized with 0.15% Triton. Primary incubation 1hr (5ug/ml) followed by Alexa Fluor 488 secondary antibody (2ug/ml), showing cytoplasmic staining. The nuclear stain is DAPI (blue). Negative control: Unimmunized goat IgG (5ug/ml) followed by Alexa Fluor 488 secondary antibody (2ug/ml).



EB10772 (3.75µg/ml) staining of paraffin embedded Human Small Intestine. Steamed antigen retrieval with citrate buffer pH 6, AP-staining.