



## UK Office

### Everest Biotech Ltd

Cherwell Innovation Centre  
77 Heyford Park  
Upper Heyford  
Oxfordshire  
OX25 5HD  
UK

Enquiries:

[info@everestbiotech.com](mailto:info@everestbiotech.com)

Sales:

[sales@everestbiotech.com](mailto:sales@everestbiotech.com)

Tech support:

[support@everestbiotech.com](mailto:support@everestbiotech.com)

Tel: +44 (0)1869 238326

[www.everestbiotech.com](http://www.everestbiotech.com)

**Research Use Only. Not for  
diagnostic or therapeutic use.**

## EB12284 - Goat Anti-NR5A2 / LRH1 (aa328-338) Antibody

Size: 100µg specific antibody in 200µl



### Target Protein

**Principal Names:** NR5A2, nuclear receptor subfamily 5, group A, member 2, B1F, B1F2, CPF, FTF, FTZ-F1, FTZ-F1beta, LRH-1, LRH1, hB1F-2, CYP7A promoter-binding factor, alpha-1-fetoprotein transcription factor, b1-binding factor, hepatocyte transcription factor which activates enhancer II of hepatitis B virus, fetoprotein-alpha 1 (AFP) transcription factor, hepatocytic transcription factor, liver nuclear receptor homolog-1 variant 2, liver receptor homolog 1, liver receptor homolog-1, nuclear receptor NR5A2, nuclear receptor subfamily 5 group A member 2

**Official Symbol:** NR5A2

**Accession Number(s):** NP\_995582.1; NP\_003813.1

**Human GenelD(s):** [2494](#)

**Important Comments:** This antibody is expected to recognize both reported isoforms (NP\_995582.1; NP\_003813.1).

### Immunogen

Peptide with sequence C-QEQANRSKHEK, from the internal region of the protein sequence according to NP\_995582.1; NP\_003813.1.

Please note the [peptide](#) is available for sale.

### Purification and Storage

Purified from goat serum by ammonium sulphate precipitation followed by antigen affinity chromatography using the immunizing peptide.

Supplied at 0.5 mg/ml in Tris saline, 0.02% sodium azide, pH7.3 with 0.5% bovine serum albumin.

Aliquot and store at -20°C. Minimize freezing and thawing.

### Applications Tested

**Peptide ELISA:** antibody detection limit dilution 1:128000.

**Western blot:** Approx 55kDa band observed in lysates of cell line HepG2 (calculated MW of 56.5kDa according to NP\_003813.1). Recommended concentration: 1-3µg/ml. Primary incubation was 1 hour.

**IHC:** Paraffin embedded Human Placenta. Recommended concentration: 5µg/ml.

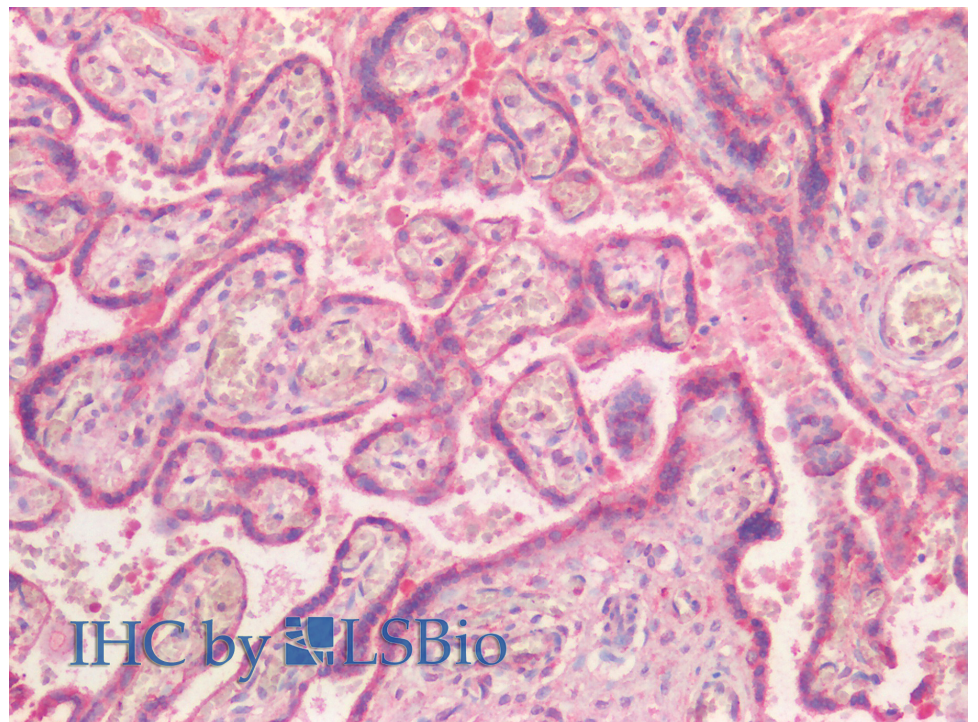
### Species Reactivity

**Tested:** Human

**Expected from sequence similarity:** Human



EB12284 (1µg/ml) staining of HepG2 lysate (35µg protein in RIPA buffer). Detected by chemiluminescence.



EB12284 (5µg/ml) staining of paraffin embedded Human Placenta. Steamed antigen retrieval with citrate buffer pH 6, AP-staining.