

International Office

Everest Biotech Ltd

Vector Laboratories, Inc.
6737 Mowry Ave
Newark, CA 94560
United States

Customer Service:

customerservice@vectorlabs.com

Technical Service:

technical@vectorlabs.com

Tel: +1 (800) 227-6666

www.everestbiotech.com

**Research Use Only. Not for
diagnostic or therapeutic use.**

EB12283 - Goat Anti-NR5A2 / LRH1 Antibody

Size: 100µg specific antibody in 200µl



Target Protein

Principal Names: NR5A2, nuclear receptor subfamily 5, group A, member 2, B1F, B1F2, CPF, FTF, FTZ-F1, FTZ-F1beta, LRH-1, LRH1, hB1F-2, CYP7A promoter-binding factor, alpha-1-fetoprotein transcription factor, b1-binding factor, hepatocyte transcription factor which activates enhancer II of hepatitis B virus, fetoprotein-alpha 1 (AFP) transcription factor, hepatocytic transcription factor, liver nuclear receptor homolog-1 variant 2, liver receptor homolog 1, liver receptor homolog-1, nuclear receptor NR5A2, nuclear receptor subfamily 5 group A member 2

Official Symbol: NR5A2

Accession Number(s): NP_995582.1; NP_003813.1

Human GeneID(s): [2494](#)

Non-Human GeneID(s): 26424 (mouse), 60349 (rat)

Important Comments: This antibody is expected to recognize both reported isoforms (NP_995582.1; NP_003813.1).

Immunogen

Peptide with sequence C-TDYDRSPFVTSPIS, from the internal region of the protein sequence according to NP_995582.1; NP_003813.1.

Please note the [peptide](#) is available for sale.

Purification and Storage

Purified from goat serum by ammonium sulphate precipitation followed by antigen affinity chromatography using the immunizing peptide.

Supplied at 0.5 mg/ml in Tris saline, 0.02% sodium azide, pH7.3 with 0.5% bovine serum albumin.

Aliquot and store at -20°C. Minimize freezing and thawing.

Applications Tested

Peptide ELISA: antibody detection limit dilution 1:128000.

Western blot: Approx 55kDa band observed in nuclear lysates of cell lines HeLa and HepG2, and approx 60kDa band observed in Pig Ovary lysates (calculated MW of 56.5kDa according to Human NP_003813.1 and Pig AFD98842.1). Recommended concentration: 0.3-1µg/ml. Primary incubation was 1 hour. Preliminary testing was unsuccessful on Mouse Liver and NIH-3T3 cell line for this particular batch.

Immunohistochemistry: This antibody has been successfully used in IHC on Mouse.

Species Reactivity

Tested: Human, Mouse, Pig

Expected from sequence similarity: Human, Mouse, Rat, Dog, Pig, Cow

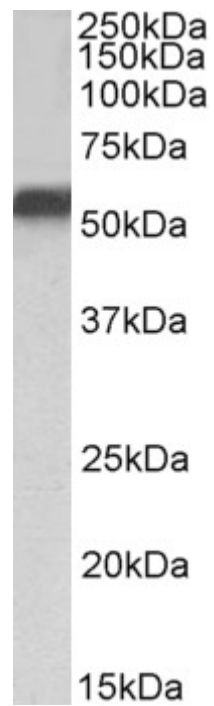
Specific Reference

This antibody has been successfully used in IHC on Mouse:

Rong Zhao, Zizhen Guo, Kaikai Lu, Qian Chen, Farooq Riaz, Yimeng Zhou, Luyun Yang, Xiaona Cheng, Litao Wu, Kexin Cheng, Lina Feng, Sitong Liu, Xiaodan Wu, Minghua Zheng, Chunyan Yin, Dongmin Li

Hepatocyte-specific NR5A2 deficiency induces pyroptosis and exacerbates non-alcoholic steatohepatitis by downregulating ALDH1B1 expression

Cell Death Dis. 2024 Oct 23;15(10):770.



EB12283 (1 μ g/ml) staining of HepG2 nuclear lysate (35 μ g protein in RIPA buffer). Detected by chemiluminescence.



EB12283 (0.3 μ g/ml) staining of Pig Ovary lysate (35 μ g protein in RIPA buffer). Detected by chemiluminescence.