



UK Office

Everest Biotech Ltd

Cherwell Innovation Centre
77 Heyford Park
Upper Heyford
Oxfordshire
OX25 5HD
UK

Enquiries:

info@everestbiotech.com

Sales:

sales@everestbiotech.com

Tech support:

support@everestbiotech.com

Tel: +44 (0)1869 238326

Fax: +44 (0)1869 238327

US Office

Everest Biotech c/o Abcore

405 Maple Street, Suite A106
Ramona,
CA 92065
USA

Inquiries:

info@everestbiotech.com

Sales:

usasales@everestbiotech.com

Tech support:

support@everestbiotech.com

Tel: 888-320-4628 (toll-free)

Fax: 888-841-9041

www.everestbiotech.com

**Research Use Only. Not for
diagnostic or therapeutic use.**

EB06684-T - Goat Anti-Nucleophosmin / NPM1 Antibody - Trial

Size: 20µg specific antibody in 40µl



Target Protein

Principal Names: NPM1, NPM, B23, nucleophosmin (nucleolar phosphoprotein B23, numatrin), numatrin, nucleolar phosphoprotein B23, nucleophosmin/nucleoplasmin family, member 1, MGC104254, nucleophosmin 1

Official Symbol: NPM1

Accession Number(s): NP_001341935.1; NP_954654.1; NP_001341936.1;
NP_001341939.1

Human GeneID(s): [4869](#)

Immunogen

Peptide with sequence C-QEAIQDLWQWRKSL, from the C Terminus of the protein sequence according to NP_001341935.1; NP_954654.1; NP_001341936.1; NP_001341939.1.

Please note the [peptide](#) is available for sale.

Purification and Storage

Purified from goat serum by ammonium sulphate precipitation followed by antigen affinity chromatography using the immunizing peptide.

Supplied at 0.5 mg/ml in Tris saline, 0.02% sodium azide, pH7.3 with 0.5% bovine serum albumin.

Aliquot and store at -20°C. Minimize freezing and thawing.

Applications Tested

Peptide ELISA: antibody detection limit dilution 1:8000.

Western blot: Approx 37kDa band observed in lysates of cell lines Daudi, Jurkat, K562 and NIH3T3 and in Mouse Spleen lysates (calculated MW of 32.6kDa according to Human NP_001341935.1 and Mouse NP_032748.1). This molecular weight is routinely observed by other sources. Recommended concentration: 0.01-1µg/ml. Primary incubation 1 hour at room temperature.

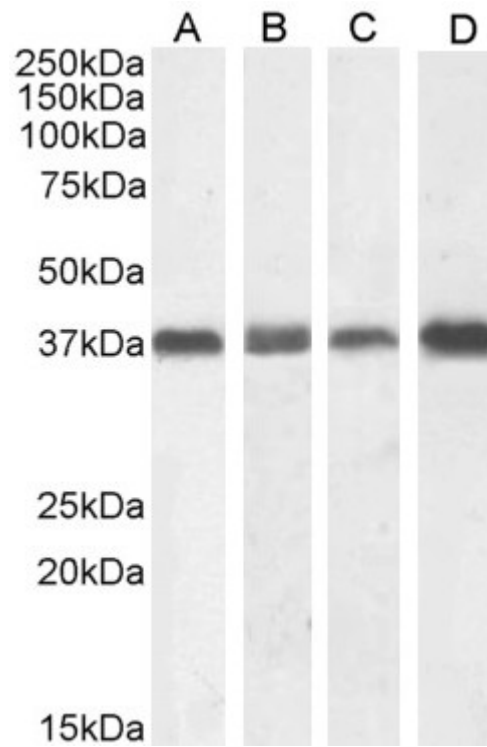
IHC: Paraffin embedded Human Testis. Recommended concentration: 5µg/ml.

Immunofluorescence: Strong expression of the protein seen in the nucleoli of HeLa cells. Recommended concentration: 10µg/ml.

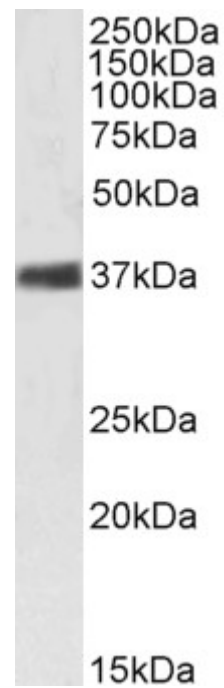
Species Reactivity

Tested: Human, Mouse

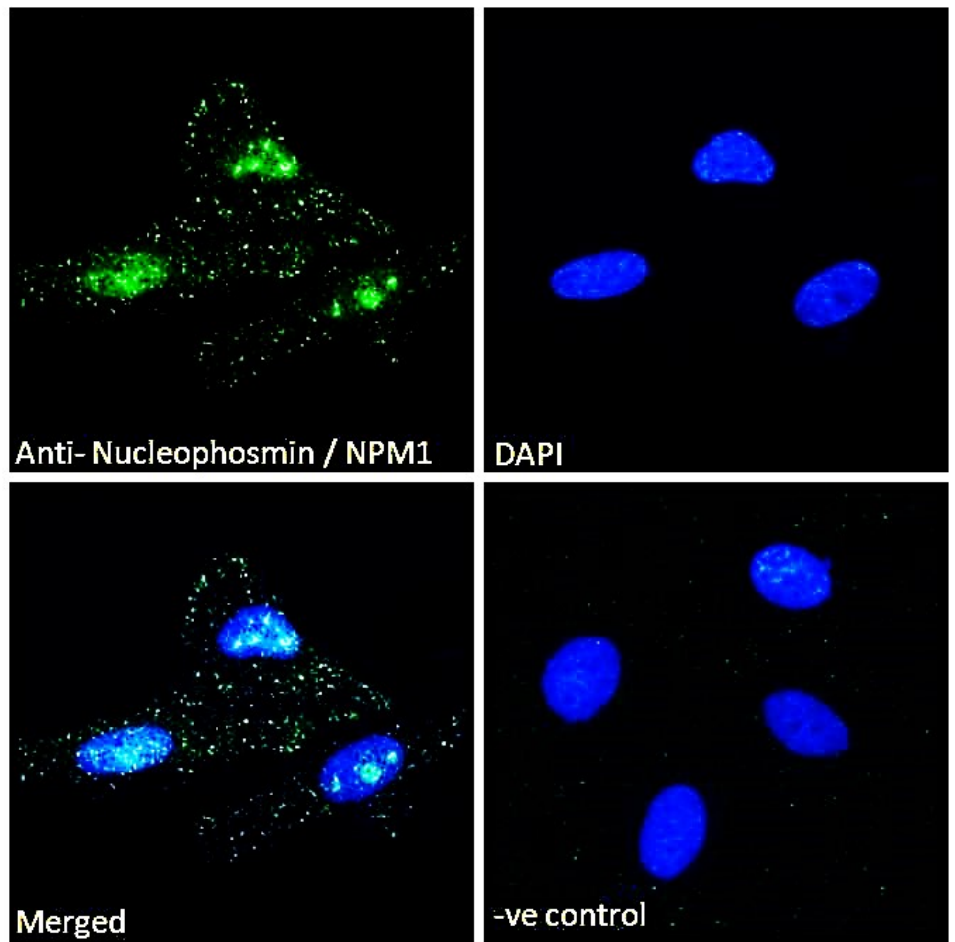
Expected from sequence similarity: Human, Mouse, Rat, Dog, Cow



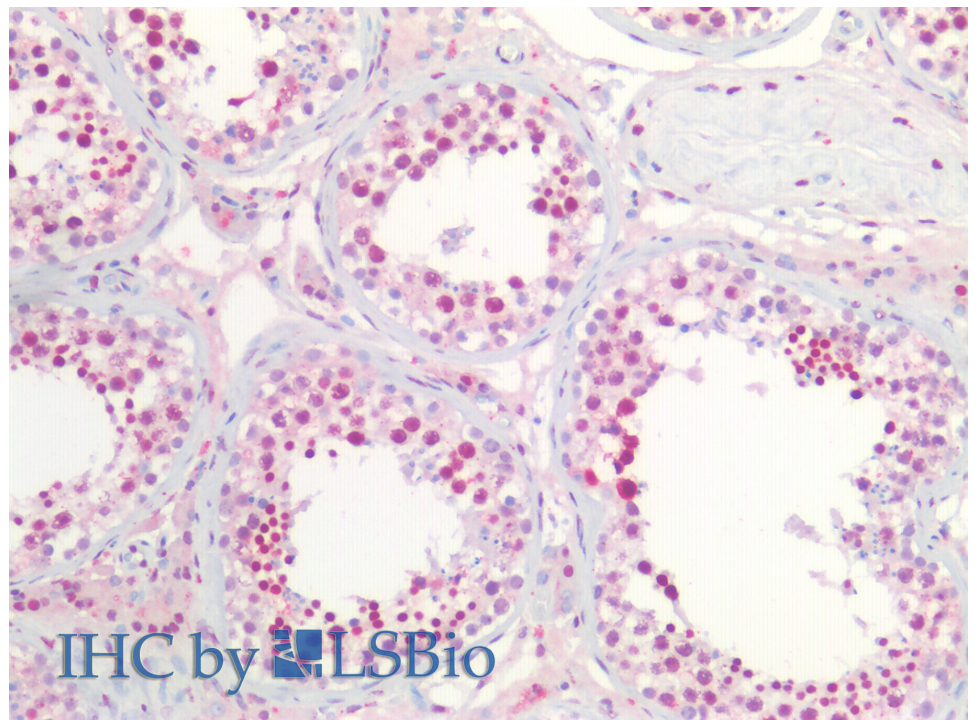
EB06684 (1 μ g/ml) staining of NIH3T3 (A), (0.1 μ g/ml) Daudi (B), Jurkat (C) and (0.01 μ g/ml) K562 (D) cell lysate (35 μ g protein in RIPA buffer). Detected by chemiluminescence.



EB06684 (1 μ g/ml) staining of Mouse Spleen lysate (35 μ g protein in RIPA buffer). Detected by chemiluminescence.



EB06684 Immunofluorescence analysis of paraformaldehyde fixed HeLa cells, permeabilized with 0.15% Triton. Primary incubation 1hr (10ug/ml) followed by Alexa Fluor 488 secondary antibody (2ug/ml), showing nucleoli staining. The nuclear stain is DAPI (blue). Negative control: Unimmunized goat IgG (10ug/ml) followed by Alexa Fluor 488 secondary antibody (2ug/ml).



EB06684 (5µg/ml) staining of paraffin embedded Human Testis. Steamed antigen retrieval with citrate buffer pH 6, AP-staining.