



UK Office

Everest Biotech Ltd

Cherwell Innovation Centre
77 Heyford Park
Upper Heyford
Oxfordshire
OX25 5HD
UK

Enquiries:

info@everestbiotech.com

Sales:

sales@everestbiotech.com

Tech support:

support@everestbiotech.com

Tel: +44 (0)1869 238326

Fax: +44 (0)1869 238327

US Office

Everest Biotech c/o Abcore

405 Maple Street, Suite A106
Ramona,
CA 92065
USA

Inquiries:

info@everestbiotech.com

Sales:

usasales@everestbiotech.com

Tech support:

support@everestbiotech.com

Tel: 888-320-4628 (toll-free)

Fax: 888-841-9041

www.everestbiotech.com

**Research Use Only. Not for
diagnostic or therapeutic use.**

EB09516 - Goat Anti-NUDC Antibody

Size: 100µg specific antibody in 200µl



Target Protein

Principal Names: NUDC, nuclear distribution gene C homolog (A. nidulans), HNUDC, MNUDC, NPD011, OTTHUMP00000004405, nuclear distribution gene C homolog

Official Symbol: NUDC

Accession Number(s): NP_006591.1

Human GeneID(s): [10726](#)

Non-Human GeneID(s): 18221 (mouse), 29648 (rat)

Immunogen

Peptide with sequence C-PNLGNGADLPNYR, from the internal region of the protein sequence according to NP_006591.1.

Please note the [peptide](#) is available for sale.

Purification and Storage

Purified from goat serum by ammonium sulphate precipitation followed by antigen affinity chromatography using the immunizing peptide.

Supplied at 0.5 mg/ml in Tris saline, 0.02% sodium azide, pH7.3 with 0.5% bovine serum albumin.

Aliquot and store at -20°C. Minimize freezing and thawing.

Applications Tested

Peptide ELISA: antibody detection limit dilution 1:32000.

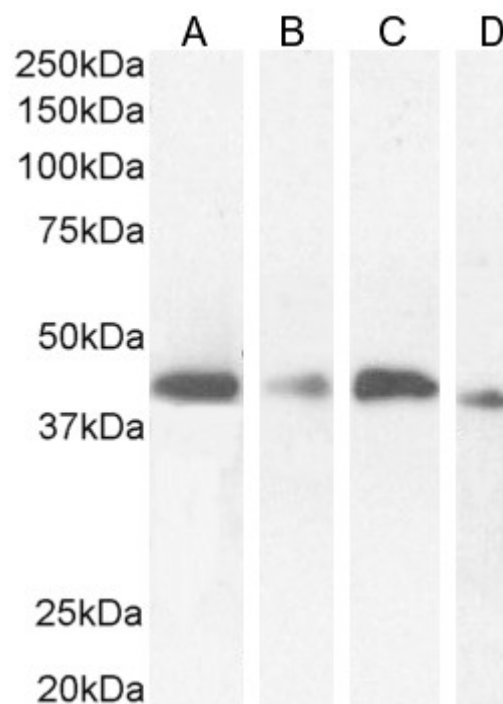
Western blot: Approx 40kDa band observed in lysates of cell lines HeLa, HepG2 and K562, and approx. 38kDa in lysates of cell line KNRK (calculated MW of 38.2kDa according to Human NP_006591.1) and 38.4kDa according to Rat NP_058967.1). Recommended concentration: 0.3-1µg/ml. Primary incubation 1 hour at room temperature.

Immunofluorescence: Strong expression of the protein seen in the cytoplasm of A431 cells. Recommended concentration: 10µg/ml.

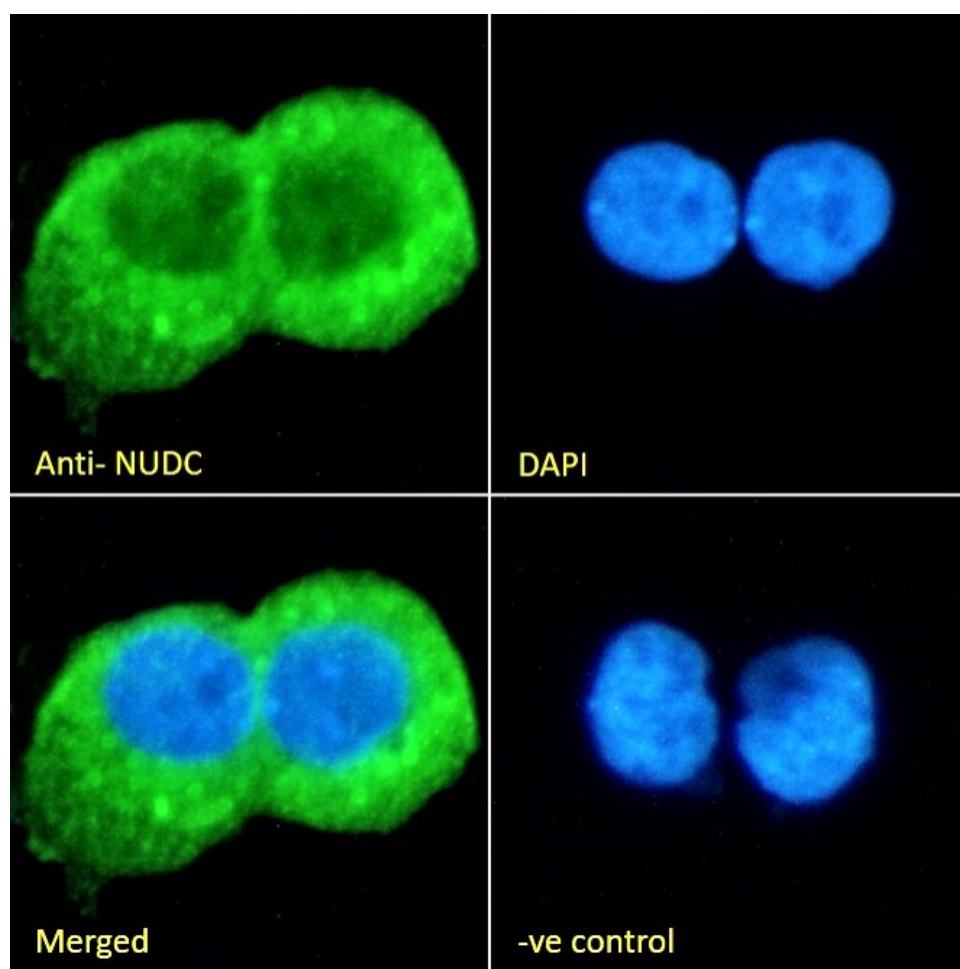
Species Reactivity

Tested: Human, Rat

Expected from sequence similarity: Human, Mouse, Rat, Dog, Cow



EB09516 (0.5 μ g/ml) staining of HeLa (A), HepG2 (B), K562 (C) and KNRK (D) cell lysate (35 μ g protein in RIPA buffer). Detected by chemiluminescence.



EB09516 Immunofluorescence analysis of paraformaldehyde fixed A431 cells, permeabilized with 0.15% Triton. Primary incubation 1hr (10 μ g/ml) followed by Alexa Fluor 488 secondary antibody (2 μ g/ml), showing cytoplasmic staining. The nuclear stain is DAPI (blue). Negative control: Unimmunized goat IgG (10 μ g/ml) followed by Alexa

Fluor 488 secondary antibody (2ug/ml).