



## UK Office

### Everest Biotech Ltd

Cherwell Innovation Centre  
77 Heyford Park  
Upper Heyford  
Oxfordshire  
OX25 5HD  
UK

Enquiries:

[info@everestbiotech.com](mailto:info@everestbiotech.com)

Sales:

[sales@everestbiotech.com](mailto:sales@everestbiotech.com)

Tech support:

[support@everestbiotech.com](mailto:support@everestbiotech.com)

Tel: +44 (0)1869 238326

Fax: +44 (0)1869 238327

## US Office

### Everest Biotech c/o Abcore

405 Maple Street, Suite A106  
Ramona,  
CA 92065  
USA

Inquiries:

[info@everestbiotech.com](mailto:info@everestbiotech.com)

Sales:

[usasales@everestbiotech.com](mailto:usasales@everestbiotech.com)

Tech support:

[support@everestbiotech.com](mailto:support@everestbiotech.com)

Tel: 888-320-4628 (toll-free)

Fax: 888-841-9041

[www.everestbiotech.com](http://www.everestbiotech.com)

**Research Use Only. Not for  
diagnostic or therapeutic use.**

## EB07404 - Goat Anti-Nur77 / TR3 (isoform a) Antibody

Size: 100µg specific antibody in 200µl



### Target Protein

**Principal Names:** NR4A1, NUR77, nuclear receptor subfamily 4, group A, member 1, GFRP1, HMR, MGC9485, N10, NAK-1, NGFIB, NP10, TR3, TR3 orphan receptor, early response protein NAK1, growth factor-inducible nuclear protein N10, hormone receptor, orphan nuclear receptor HMR, steroid receptor TR3

**Official Symbol:** NR4A1

**Accession Number(s):** NP\_002126.2; NP\_775180.1

**Human GeneID(s):** [3164](#)

**Non-Human GeneID(s):** 15370 (mouse), 79240 (rat)

**Important Comments:** This antibody is expected to recognise isoform a (NP\_002126.2 and NP\_775180.1) only.

### Immunogen

Peptide with sequence C-GRLPSKPKQPPDAS, from the internal region of the protein sequence according to NP\_002126.2; NP\_775180.1.

Please note the [peptide](#) is available for sale.

### Purification and Storage

Purified from goat serum by ammonium sulphate precipitation followed by antigen affinity chromatography using the immunizing peptide.

Supplied at 0.5 mg/ml in Tris saline, 0.02% sodium azide, pH7.3 with 0.5% bovine serum albumin.

Aliquot and store at -20°C. Minimize freezing and thawing.

### Applications Tested

**Peptide ELISA:** antibody detection limit dilution 1:32000.

**Western blot:** Approx 60kDa band observed in Human Thyroid gland lysates (calculated MW of 64.5kDa according to NP\_002126.2 and NP\_775180.1). Recommended concentration: 1-3µg/ml. Primary incubation was 1 hour.

**IHC:** Paraffin embedded Human Breast. Recommended concentration: 5µg/ml.

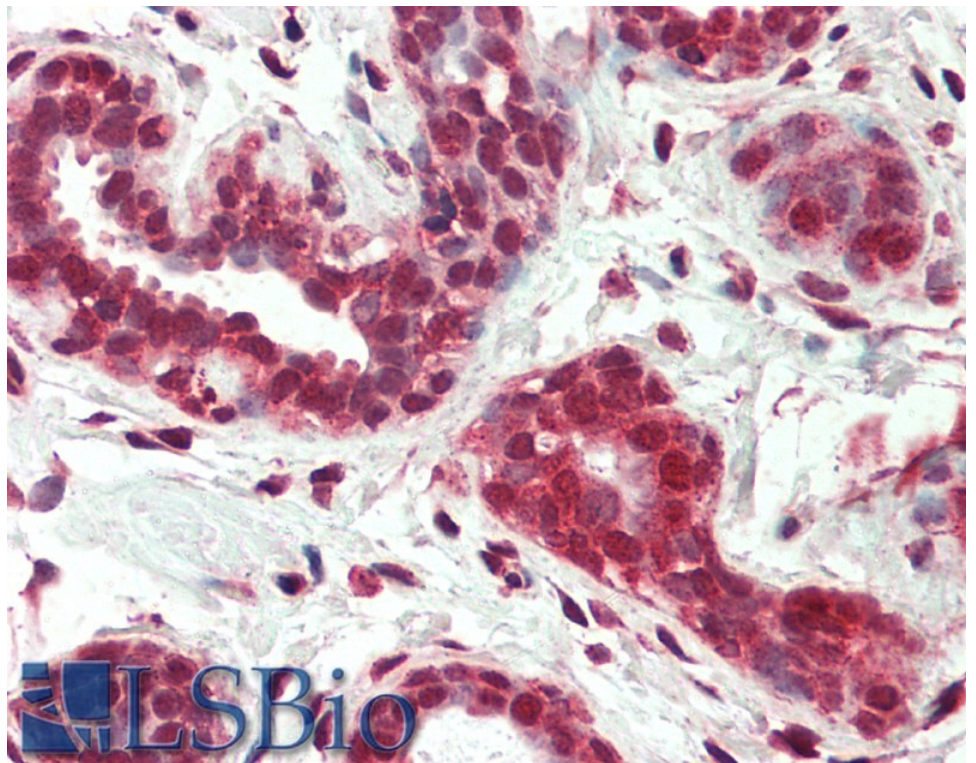
### Species Reactivity

**Tested:** Human

**Expected from sequence similarity:** Human, Mouse, Rat, Dog



EB07404 (2µg/ml) staining of Human Thyroid lysate (35µg protein in RIPA buffer). Detected by chemiluminescence.



EB07404 (5µg/ml) staining of paraffin embedded Human Breast. Steamed antigen retrieval with citrate buffer pH 6, AP-staining.