



UK Office

Everest Biotech Ltd

Cherwell Innovation Centre
77 Heyford Park
Upper Heyford
Oxfordshire
OX25 5HD
UK

Enquiries:

info@everestbiotech.com

Sales:

sales@everestbiotech.com

Tech support:

support@everestbiotech.com

Tel: +44 (0)1869 238326

www.everestbiotech.com

**Research Use Only. Not for
diagnostic or therapeutic use.**

EB09145 - Goat Anti-NY-ESO-1 Antibody

Size: 100µg specific antibody in 200µl



Target Protein

Principal Names: CTAG1B, cancer/testis antigen 1B, CTAG, CTAG1, ESO1, LAGE-2, LAGE2B, NY-ESO-1, New York esophageal squamous cell carcinoma 1, cancer antigen 3

Official Symbol: CTAG1B

Accession Number(s): NP_001318.1

Human GeneID(s): [1485](#)

Immunogen

Peptide with sequence C-AELARRSLAQDAP, from the internal region of the protein sequence according to NP_001318.1.

Please note the [peptide](#) is available for sale.

Purification and Storage

Purified from goat serum by ammonium sulphate precipitation followed by antigen affinity chromatography using the immunizing peptide.

Supplied at 0.5 mg/ml in Tris saline, 0.02% sodium azide, pH7.3 with 0.5% bovine serum albumin.

Aliquot and store at -20°C. Minimize freezing and thawing.

Applications Tested

Peptide ELISA: antibody detection limit dilution 1:16000.

Immunofluorescence: Strong expression of the protein seen in the cytoplasm of A549 cells. Recommended concentration: 10µg/ml.

Flow Cytometry: Flow cytometric analysis of A549 cells. Recommended concentration: 10ug/ml.

Microarray: This product has been successfully used in Microarray as described in a scientific publication (PMID: 22922091).

Species Reactivity

Tested: Human

Expected from sequence similarity: Human

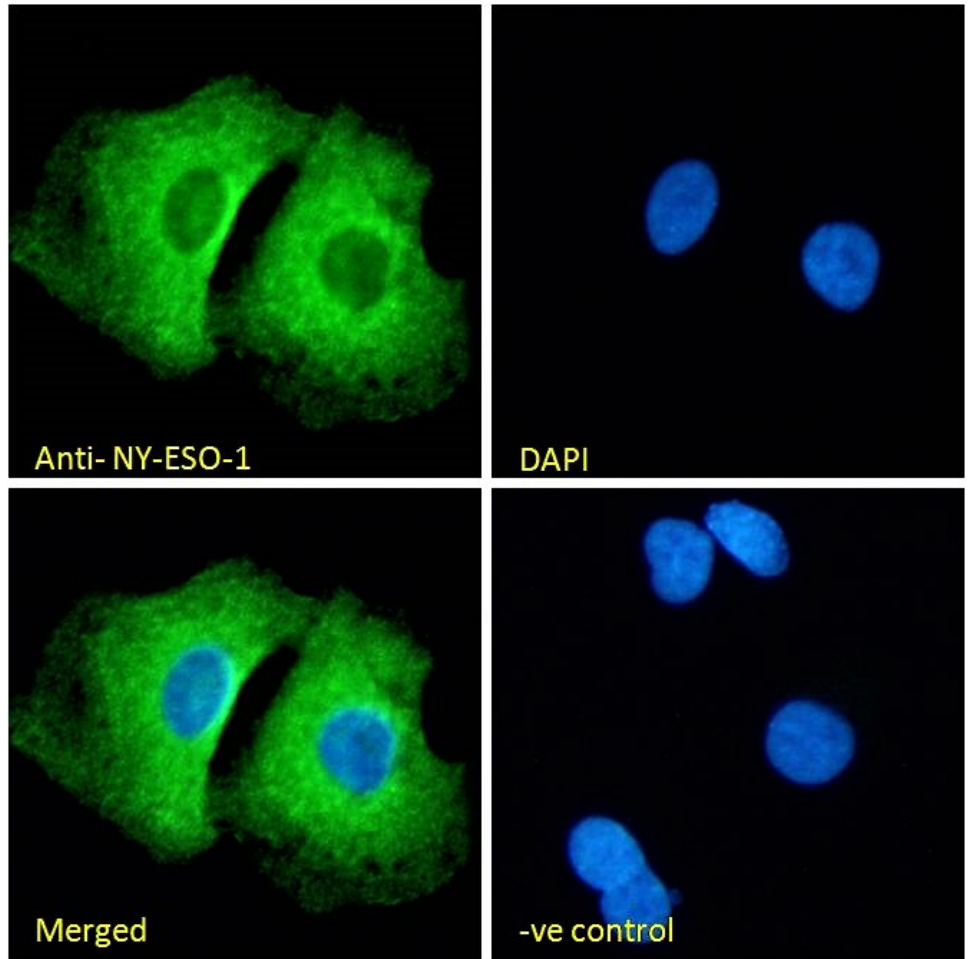
Specific Reference

Shan Q, Lou X, Xiao T, Zhang J, Sun H, Gao Y, Cheng S, Wu L, Xu N, Liu S.

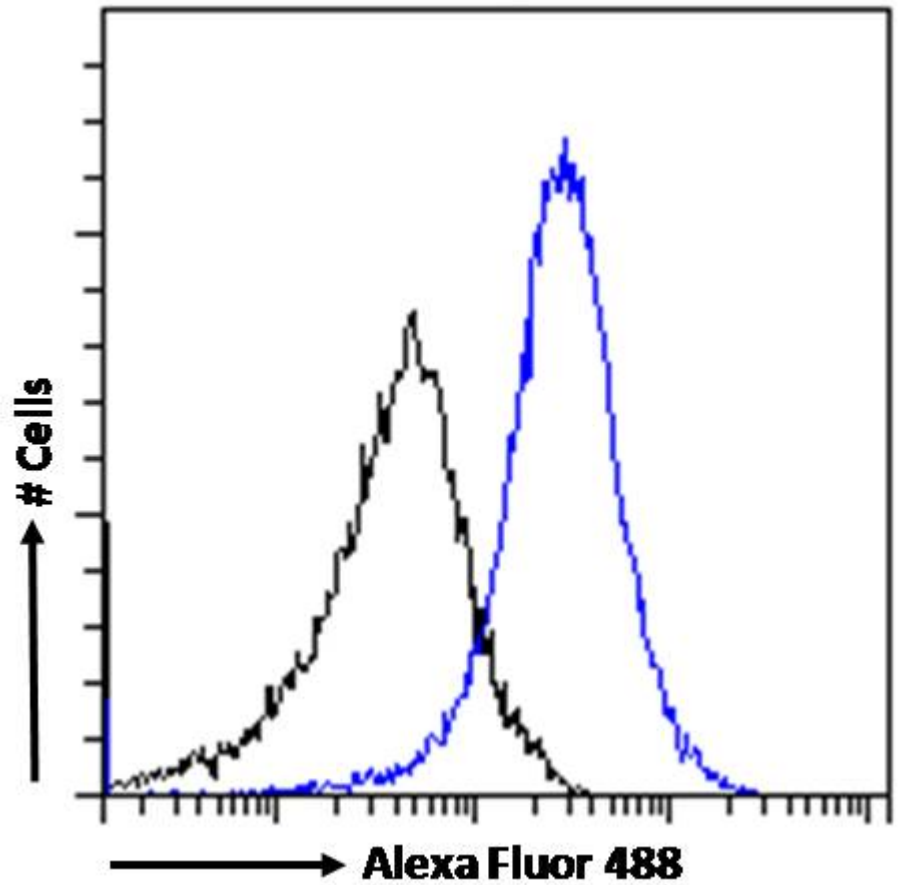
A cancer/testis antigen microarray to screen autoantibody biomarkers of non-small cell lung cancer.

Cancer Lett. 2013 Jan 1;328(1):160-7.

PMID: 22922091



EB09145 Immunofluorescence analysis of paraformaldehyde fixed A549 cells, permeabilized with 0.15% Triton. Primary incubation 1hr (10ug/ml) followed by Alexa Fluor 488 secondary antibody (2ug/ml), showing cytoplasmic staining. The nuclear stain is DAPI (blue). Negative control: Unimmunized goat IgG (10ug/ml) followed by Alexa Fluor 488 secondary antibody (2ug/ml).



EB09145 Flow cytometric analysis of paraformaldehyde fixed A549 cells (blue line), permeabilized with 0.5% Triton. Primary incubation 1hr (10ug/ml) followed by Alexa Fluor 488 secondary antibody (1ug/ml). IgG control: Unimmunized goat IgG (black line) followed by Alexa Fluor 488 secondary antibody.