

UK Office

Everest Biotech Ltd

Cherwell Innovation Centre
77 Heyford Park
Upper Heyford
Oxfordshire
OX25 5HD
UK

Enquiries:

info@everestbiotech.com

Sales:

sales@everestbiotech.com

Tech support:

support@everestbiotech.com

Tel: +44 (0)1869 238326

www.everestbiotech.com

**Research Use Only. Not for
diagnostic or therapeutic use.**

EB12373 - Goat Anti-OAS2 (aa357-371) Antibody

Size: 100µg specific antibody in 200µl



Target Protein

Principal Names: OAS2, 2'-5'-oligoadenylate synthetase 2, 69/71kDa, (2'-5')oligo(A) synthetase 2, 2'-5'-oligoadenylate synthase 2, 2-5A synthase 2, p69 OAS / p71 OAS

Official Symbol: OAS2

Accession Number(s): NP_058197.2; NP_002526.2

Human GeneID(s): [4939](#)

Important Comments: This antibody is expected to recognize reported isoform 1 (NP_058197.2) and isoform 2 (NP_002526.2).

Immunogen

Peptide with sequence QPNKCFLEQIDSAVN, from the internal region of the protein sequence according to NP_058197.2; NP_002526.2.

Please note the [peptide](#) is available for sale.

Purification and Storage

Purified from goat serum by ammonium sulphate precipitation followed by antigen affinity chromatography using the immunizing peptide.

Supplied at 0.5 mg/ml in Tris saline, 0.02% sodium azide, pH7.3 with 0.5% bovine serum albumin.

Aliquot and store at -20°C. Minimize freezing and thawing.

Applications Tested

Peptide ELISA: antibody detection limit dilution 1:128000.

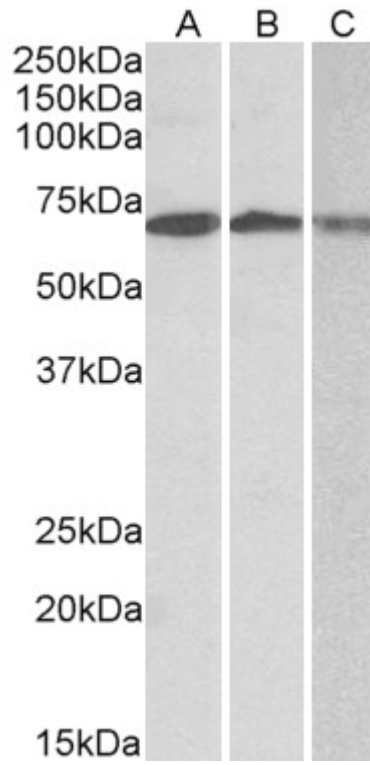
Western blot: Approx 70kDa band observed in lysates of cell lines Daudi, Jurkat and K562 (calculated MW of 78.8kDa according to NP_002526.2). The observed molecular weight corresponds to earlier findings in literature with different antibodies (Lin et al, J Immunol. 2009 Dec 15;183(12):8035-43. PMID: 19923450). Recommended concentration: 0.3-1µg/ml. Primary incubation was 1 hour.

IHC: Paraffin embedded Human Breast. Recommended concentration: 5µg/ml.

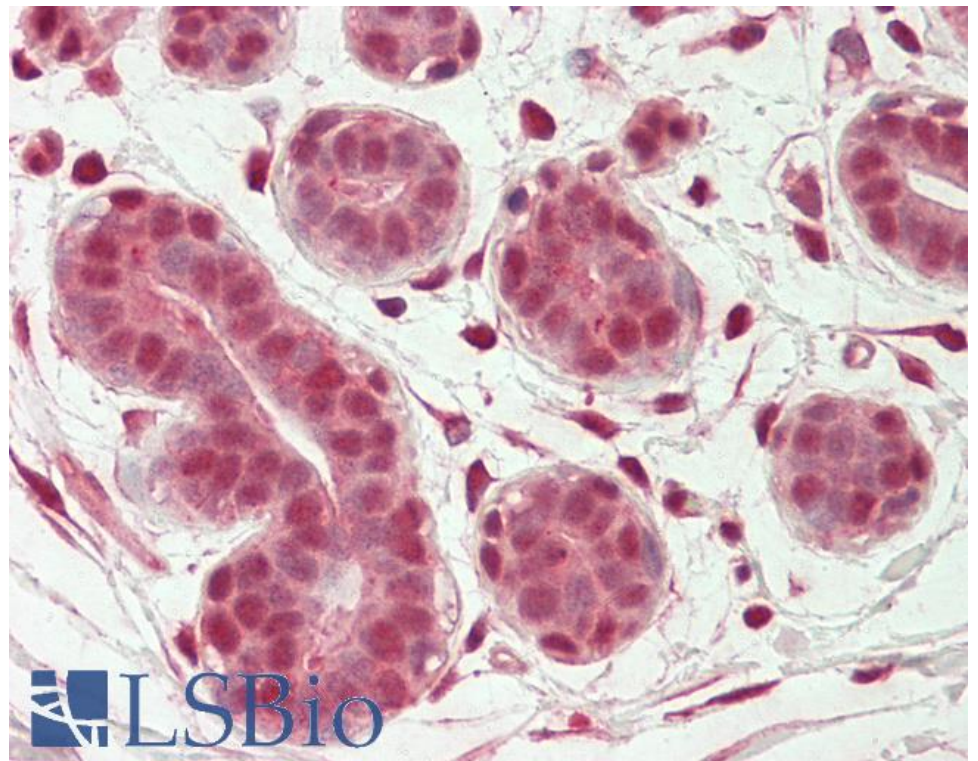
Species Reactivity

Tested: Human

Expected from sequence similarity: Human



EB12373 (0.3µg/ml) staining of Daudi (A), Jurkat (B) and K562 (C) lysates (35µg protein in RIPA buffer).
Detected by chemiluminescence.



EB12373 (5µg/ml) staining of paraffin embedded Human Breast. Steamed antigen retrieval with citrate buffer pH 6, AP-staining.