



UK Office

Everest Biotech Ltd

Cherwell Innovation Centre
77 Heyford Park
Upper Heyford
Oxfordshire
OX25 5HD
UK

Enquiries:

info@everestbiotech.com

Sales:

sales@everestbiotech.com

Tech support:

support@everestbiotech.com

Tel: +44 (0)1869 238326

www.everestbiotech.com

**Research Use Only. Not for
diagnostic or therapeutic use.**

EB06914 - Goat Anti-OASIS / CREB3L1 Antibody

Size: 100µg specific antibody in 200µl



Target Protein

Principal Names: CREB3L1, OASIS, cAMP responsive element binding protein 3-like 1, BBF-2 (drosophila) homolog, old astrocyte specifically induced substance, BBF-2 homolog

Official Symbol: CREB3L1

Accession Number(s): NP_443086.1

Immunogen

Peptide with sequence C-DFSHSKEWFHDRD, from the C Terminus of the protein sequence according to NP_443086.1.

Please note the [peptide](#) is available for sale.

Purification and Storage

Purified from goat serum by ammonium sulphate precipitation followed by antigen affinity chromatography using the immunizing peptide.

Supplied at 0.5 mg/ml in Tris saline, 0.02% sodium azide, pH7.3 with 0.5% bovine serum albumin.

Aliquot and store at -20°C. Minimize freezing and thawing.

Applications Tested

Peptide ELISA: antibody detection limit dilution 1:32000.

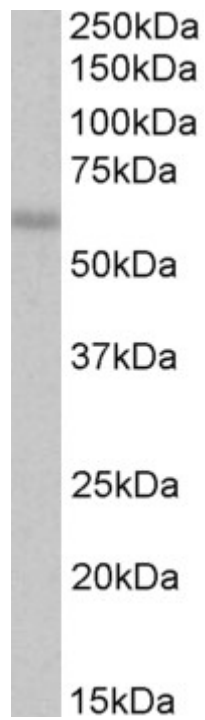
Western blot: Approx 60kDa band observed in lysates of cell line A549 (calculated MW of 57.0kDa according to NP_443086.1). Recommended concentration: 1-3µg/ml.

IHC: Paraffin embedded Human Skeletal Muscle and Liver. Recommended concentration: 3.75µg/ml.

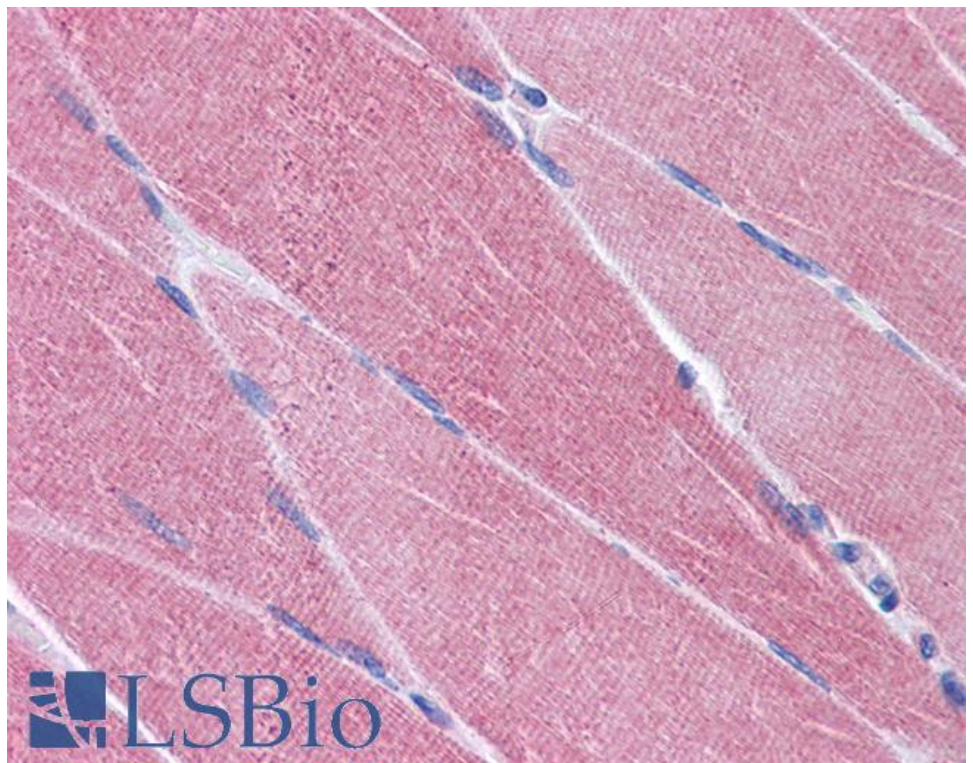
Species Reactivity

Tested: Human

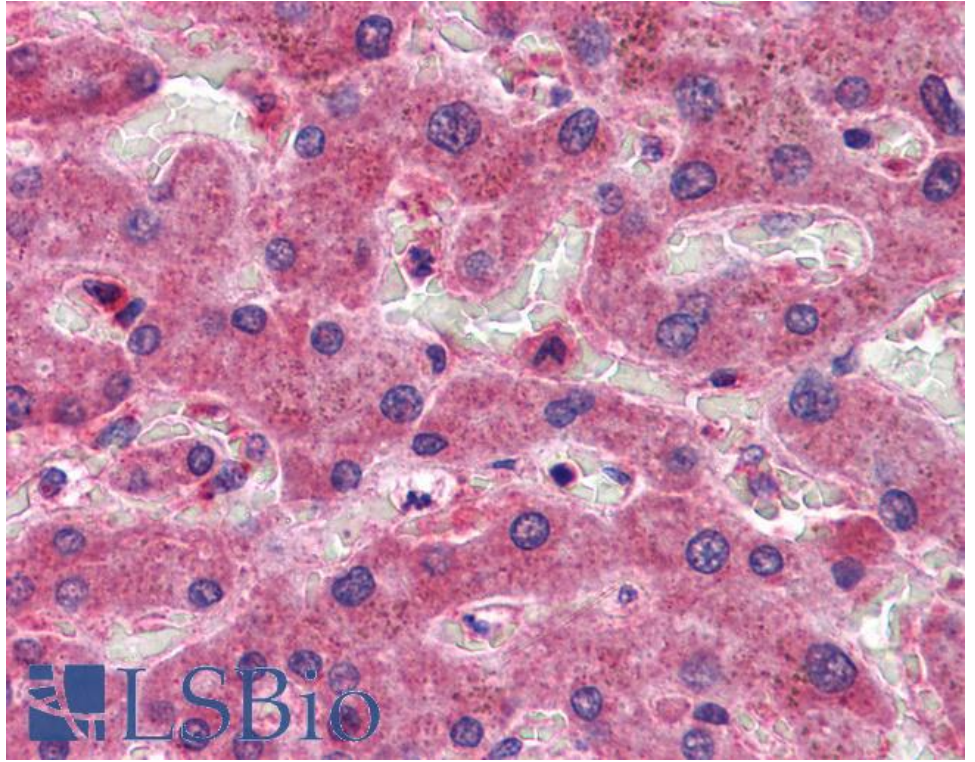
Expected from sequence similarity: Human, Mouse, Rat



EB06914 (1 μ g/ml) staining of A549 lysate (35 μ g protein in RIPA buffer). Primary incubation was 1 hour.
Detected by chemiluminescence.



EB06914 (3.75 μ g/ml) staining of paraffin embedded Human Skeletal Muscle. Steamed antigen retrieval with citrate buffer pH 6, AP-staining.



EB06914 (3.75µg/ml) staining of paraffin embedded Human Liver. Steamed antigen retrieval with citrate buffer pH 6, AP-staining.