



UK Office

Everest Biotech Ltd

Cherwell Innovation Centre
77 Heyford Park
Upper Heyford
Oxfordshire
OX25 5HD
UK

Enquiries:

info@everestbiotech.com

Sales:

sales@everestbiotech.com

Tech support:

support@everestbiotech.com

Tel: +44 (0)1869 238326

Fax: +44 (0)1869 238327

US Office

Everest Biotech c/o Abcore

405 Maple Street, Suite A106
Ramona,
CA 92065
USA

Inquiries:

info@everestbiotech.com

Sales:

usasales@everestbiotech.com

Tech support:

support@everestbiotech.com

Tel: 888-320-4628 (toll-free)

Fax: 888-841-9041

www.everestbiotech.com

**Research Use Only. Not for
diagnostic or therapeutic use.**

EB09341 - Goat Anti-OCIL Antibody

Size: 100µg specific antibody in 200µl



Target Protein

Principal Names: CLEC2D, C-type lectin domain family 2, member D, CLAX, LLT1, OCIL, C-type lectin related f, C-type lectin superfamily 2, member D, lectin-like NK cell receptor, lectin-like transcript 1, osteoclast inhibitory lectin

Official Symbol: CLEC2D

Accession Number(s): NP_037401.1; NP_001004419.1; NP_001184246.1

Human GeneID(s): [29121](#)

Important Comments: This antibody is expected to recognize all isoforms (NP_037401.1; NP_001004419.1; NP_001184246.1).

Immunogen

Peptide with sequence C-LLRYKGPSDH, from the Internal region of the protein sequence according to NP_037401.1; NP_001004419.1; NP_001184246.1.

Please note the [peptide](#) is available for sale.

Purification and Storage

Purified from goat serum by ammonium sulphate precipitation followed by antigen affinity chromatography using the immunizing peptide.

Supplied at 0.5 mg/ml in Tris saline, 0.02% sodium azide, pH7.3 with 0.5% bovine serum albumin.

Aliquot and store at -20°C. Minimize freezing and thawing.

Applications Tested

Peptide ELISA: antibody detection limit dilution 1:16000.

Western blot: Approx 30-35kDa band observed in lysates of histiocytic lymphoma cell line U937 (calculated MW of 22.3kDa according to NP_001004419.1). This molecular weight is routinely observed by other sources. Recommended concentration: 0.3-1µg/ml. Primary incubation 1 hour at room temperature.

IHC: Paraffin embedded Human Tonsil and Placenta. Recommended concentration: 3.75µg/ml.

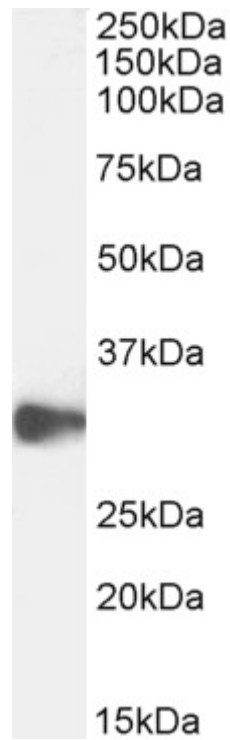
Immunofluorescence: Strong expression of the protein seen in the cytoplasm of A431 cells. Recommended concentration: 10µg/ml.

Flow Cytometry: Flow cytometric analysis of Jurkat cells. Recommended concentration: 10ug/ml.

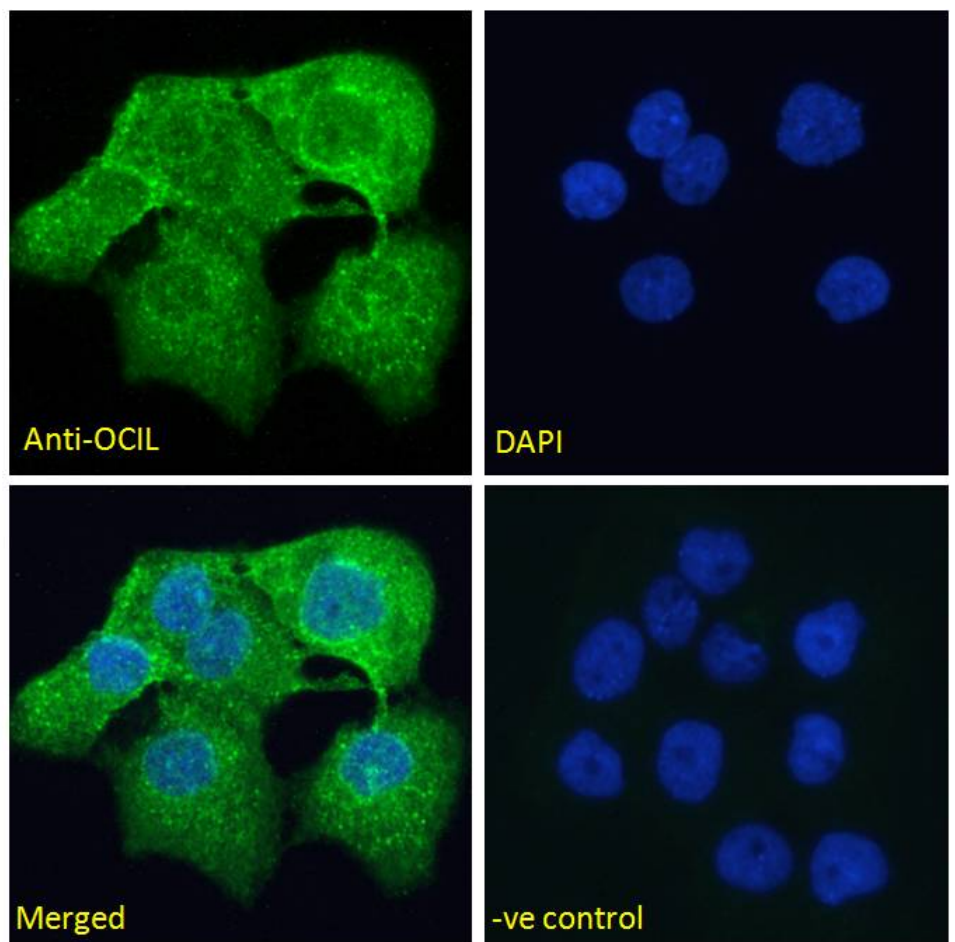
Species Reactivity

Tested: Human

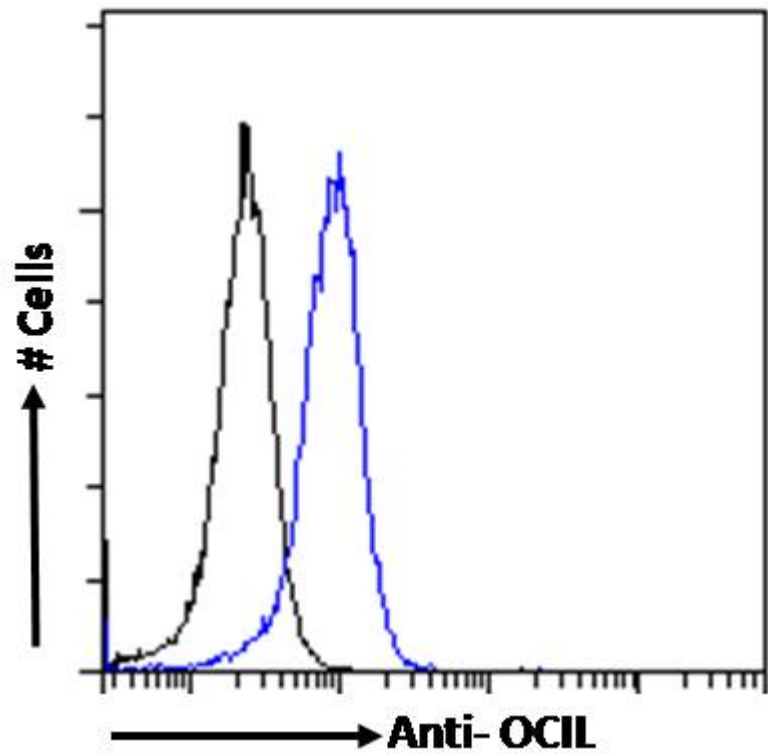
Expected from sequence similarity: Human, Dog, Cow



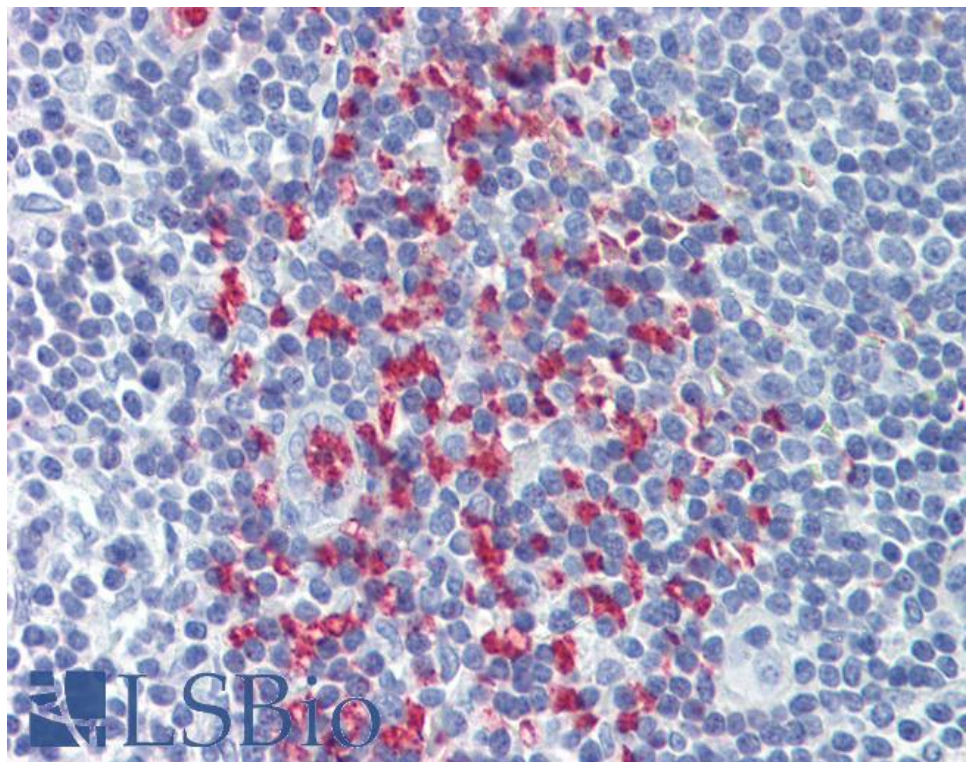
EB09341 (0.3 μ g/ml) staining of U937 cell lysate (35 μ g protein in RIPA buffer). Detected by chemiluminescence.



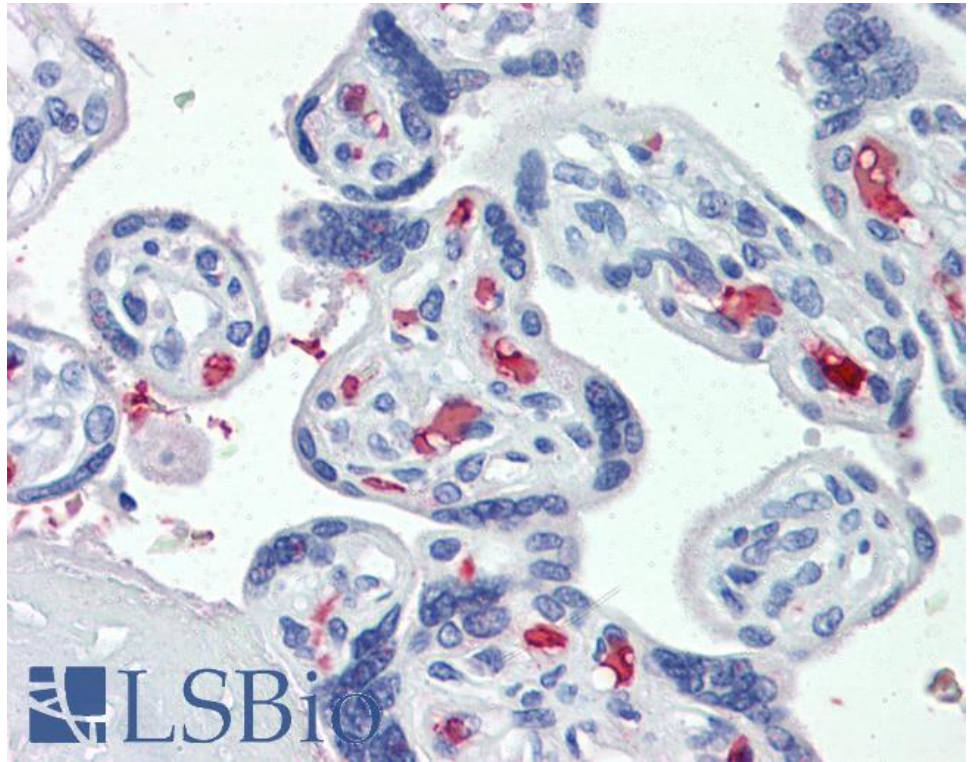
EB09341 Immunofluorescence analysis of paraformaldehyde fixed A431 cells, permeabilized with 0.15% Triton. Primary incubation 1hr (10 μ g/ml) followed by Alexa Fluor 488 secondary antibody (2 μ g/ml), showing cytoplasmic/membrane staining. The nuclear stain is DAPI (blue). Negative control: Unimmunized goat IgG (10 μ g/ml) followed by Alexa Fluor 488 secondary antibody (2 μ g/ml).



EB09341 Flow cytometric analysis of paraformaldehyde fixed Jurkat cells (blue line), permeabilized with 0.5% Triton. Primary incubation 1hr (10ug/ml) followed by Alexa Fluor 488 secondary antibody (1ug/ml). IgG control: Unimmunized goat IgG (black line) followed by Alexa Fluor 488 secondary antibody.



EB09341 (3.75µg/ml) staining of paraffin embedded Human Tonsil. Steamed antigen retrieval with citrate buffer pH 6, AP-staining.



EB09341 (3.75µg/ml) staining of paraffin embedded Human Placenta. Steamed antigen retrieval with citrate buffer pH 6, AP-staining.