



## UK Office

### Everest Biotech Ltd

Cherwell Innovation Centre  
77 Heyford Park  
Upper Heyford  
Oxfordshire  
OX25 5HD  
UK

Enquiries:

[info@everestbiotech.com](mailto:info@everestbiotech.com)

Sales:

[sales@everestbiotech.com](mailto:sales@everestbiotech.com)

Tech support:

[support@everestbiotech.com](mailto:support@everestbiotech.com)

Tel: +44 (0)1869 238326

Fax: +44 (0)1869 238327

## US Office

### Everest Biotech c/o Abcore

405 Maple Street, Suite A106  
Ramona,  
CA 92065  
USA

Inquiries:

[info@everestbiotech.com](mailto:info@everestbiotech.com)

Sales:

[usasales@everestbiotech.com](mailto:usasales@everestbiotech.com)

Tech support:

[support@everestbiotech.com](mailto:support@everestbiotech.com)

Tel: 888-320-4628 (toll-free)

Fax: 888-841-9041

[www.everestbiotech.com](http://www.everestbiotech.com)

**Research Use Only. Not for  
diagnostic or therapeutic use.**

## EB06852 - Goat Anti-OCT4 / POU5F1 Antibody

Size: 100µg specific antibody in 200µl



### Target Protein

**Principal Names:** POU5F1, OTF4, POU domain, class 5, transcription factor 1, HGNC:9221, MGC22487, OCT3, OTF3, POU-type homeodomain-containing DNA-binding protein, octamer-binding transcription factor-3, POU class 5 homeobox 1, DADB-104B20.2, OCT4, POU domain, class 5, transcription factor 1

**Official Symbol:** POU5F1

**Accession Number(s):** NP\_002692.2; NP\_976034.3

**Human GeneID(s):** [5460](#)

**Non-Human GeneID(s):** 18999 (mouse), 294562 (rat)

**Important Comments:** This antibody is expected to recognise both reported isoforms (NP\_002692.2 and NP\_976034.3)

### Immunogen

Peptide with sequence C-VTTLGSPMHSN, from the C Terminus of the protein sequence according to NP\_002692.2; NP\_976034.3.

Please note the [peptide](#) is available for sale.

### Purification and Storage

Purified from goat serum by ammonium sulphate precipitation followed by antigen affinity chromatography using the immunizing peptide.

Supplied at 0.5 mg/ml in Tris saline, 0.02% sodium azide, pH7.3 with 0.5% bovine serum albumin.

Aliquot and store at -20°C. Minimize freezing and thawing.

### Applications Tested

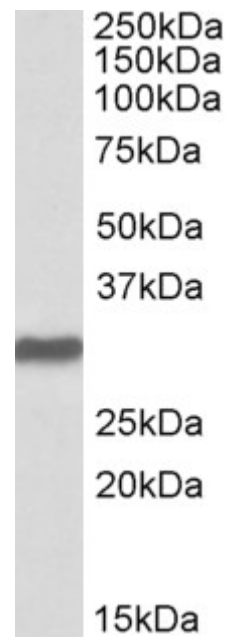
**Peptide ELISA:** antibody detection limit dilution 1:2000.

**Western blot:** Approx 30kDa band observed in Human Placenta, and approx 28kDa in Mouse Heart lysates (calculated MW of 30.1kDa according to Human NP\_976034.3 and 25.0kDa according to Mouse NP\_001239381.1). Recommended concentration: 0.5-2µg/ml. Primary incubation was 1 hour

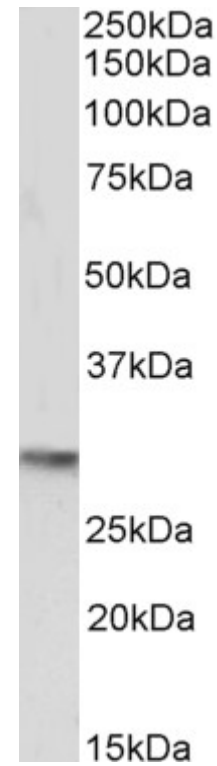
### Species Reactivity

**Tested:** Human, Mouse

**Expected from sequence similarity:** Human, Mouse, Rat, Dog



EB06852 (2 $\mu$ g/ml) staining of Human Placenta lysate (35 $\mu$ g protein in RIPA buffer). Detected by chemiluminescence.



EB06852 (0.5 $\mu$ g/ml) staining of Mouse Heart lysate (35 $\mu$ g protein in RIPA buffer). Detected by chemiluminescence.