



International Office

Everest Biotech Ltd

Vector Laboratories, Inc.
6737 Mowry Ave
Newark, CA 94560
United States

Customer Service:

customerservice@vectorlabs.com

Technical Service:

technical@vectorlabs.com

Tel: +1 (800) 227-6666

www.everestbiotech.com

**Research Use Only. Not for
diagnostic or therapeutic use.**

EB11151 - Goat Anti-OCT6 (aa192-204) Antibody

Size: 100µg specific antibody in 200µl



Target Protein

Principal Names: OCT6, octamer-binding protein 6, octamer-binding transcription factor 6, OTF6, OTF-6, POU class 3 homeobox 1, POU domain transcription factor SCIP, POU domain, class 3, transcription factor 1, SCIP, POU3F1

Official Symbol: POU3F1

Accession Number(s): NP_002690.3

Human GeneID(s): [5453](#)

Non-Human GeneID(s): 18991 (mouse), 192110 (rat)

Immunogen

Peptide with sequence C-HEDGHEAQLEPSP, from the internal region of the protein sequence according to NP_002690.3.

Please note the [peptide](#) is available for sale.

Purification and Storage

Purified from goat serum by ammonium sulphate precipitation followed by antigen affinity chromatography using the immunizing peptide.

Supplied at 0.5 mg/ml in Tris saline, 0.02% sodium azide, pH7.3 with 0.5% bovine serum albumin.

Aliquot and store at -20°C. Minimize freezing and thawing.

Applications Tested

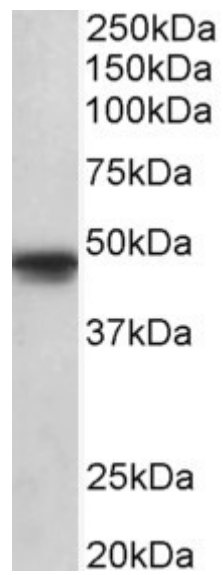
Peptide ELISA: antibody detection limit dilution 1:8000.

Western blot: Approx 48kDa band observed in lysates of cell line A549 (calculated MW of 45.5kDa according to NP_002690.3). Recommended concentration: 1-3µg/ml.

Species Reactivity

Tested: Human

Expected from sequence similarity: Human, Mouse, Rat, Dog, Pig, Cow



EB11151 (1 μ g/ml) staining of A549 lysate (35 μ g protein in RIPA buffer). Primary incubation was 1 hour.
Detected by chemiluminescence.