



International Office

Everest Biotech Ltd

Vector Laboratories, Inc.
6737 Mowry Ave
Newark, CA 94560
United States

Customer Service:

customerservice@vectorlabs.com

Technical Service:

technical@vectorlabs.com

Tel: +1 (800) 227-6666

www.everestbiotech.com

**Research Use Only. Not for
diagnostic or therapeutic use.**

EB07884 - Goat Anti-Ogg1 (mouse) Antibody

Size: 100µg specific antibody in 200µl



Target Protein

Principal Names: Ogg1, 8-oxoguanine DNA glycosylase, Mmh

Official Symbol: OGG1

Accession Number(s): NP_035087.2

Non-Human GeneID(s): 18294 (mouse), 81528 (rat)

Immunogen

Peptide with sequence C-HPKTSQAKGPSPLANK, from the internal region of the protein sequence according to NP_035087.2.

Please note the [peptide](#) is available for sale.

Purification and Storage

Purified from goat serum by ammonium sulphate precipitation followed by antigen affinity chromatography using the immunizing peptide.

Supplied at 0.5 mg/ml in Tris saline, 0.02% sodium azide, pH7.3 with 0.5% bovine serum albumin.

Aliquot and store at -20°C. Minimize freezing and thawing.

Applications Tested

Peptide ELISA: antibody detection limit dilution 1:128000.

Western blot: Approx 37kDa band observed in Rat Spleen lysates (calculated MW of 38.7kDa according to Rat NP_110497.1 and 38.8kDa according to Mouse NP_035087.2).

Recommended concentration: 0.1-0.3µg/ml.

IHC: Paraffin embedded Human Kidney. Recommended concentration: 5µg/ml.

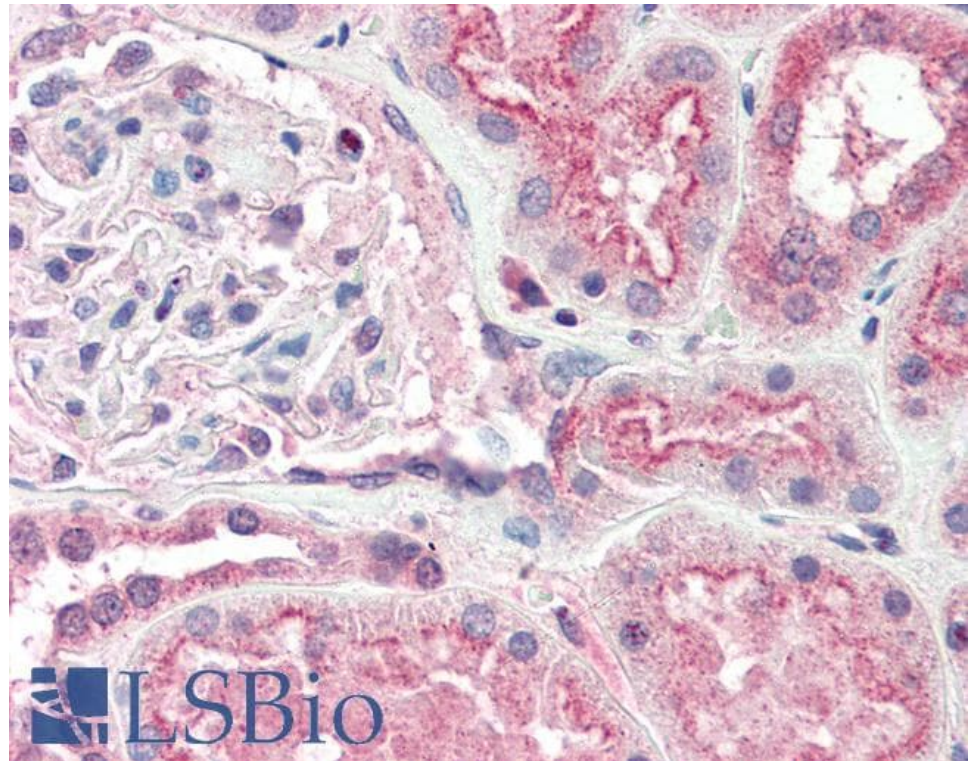
Species Reactivity

Tested: Human, Rat

Expected from sequence similarity: Mouse, Rat

250kDa
150kDa
100kDa
75kDa
50kDa
37kDa
25kDa
20kDa
15kDa

EB07884 (0.1µg/ml) staining of Rat Spleen lysate (35µg protein in RIPA buffer). Primary incubation was 1 hour.
Detected by chemiluminescence.



EB07884 (5µg/ml) staining of paraffin embedded Human Kidney. Steamed antigen retrieval with citrate buffer pH 6, AP-staining.