



## UK Office

### Everest Biotech Ltd

Cherwell Innovation Centre  
77 Heyford Park  
Upper Heyford  
Oxfordshire  
OX25 5HD  
UK

Enquiries:

[info@everestbiotech.com](mailto:info@everestbiotech.com)

Sales:

[sales@everestbiotech.com](mailto:sales@everestbiotech.com)

Tech support:

[support@everestbiotech.com](mailto:support@everestbiotech.com)

Tel: +44 (0)1869 238326

Fax: +44 (0)1869 238327

## US Office

### Everest Biotech c/o Abcore

405 Maple Street, Suite A106  
Ramona,  
CA 92065  
USA

Inquiries:

[info@everestbiotech.com](mailto:info@everestbiotech.com)

Sales:

[usasales@everestbiotech.com](mailto:usasales@everestbiotech.com)

Tech support:

[support@everestbiotech.com](mailto:support@everestbiotech.com)

Tel: 888-320-4628 (toll-free)

Fax: 888-841-9041

[www.everestbiotech.com](http://www.everestbiotech.com)

**Research Use Only. Not for  
diagnostic or therapeutic use.**

## EB05064 - Goat Anti-ORC3L Antibody

Size: 100µg specific antibody in 200µl



### Target Protein

**Principal Names:** ORC3L, origin recognition complex, subunit 3-like (yeast), LAT, ORC3, LATHEO, IMAGE50150, origin recognition complex, subunit 3 (yeast homolog)-like, OTTHUMP00000040611, homolog of latheo, Drosophila, RP3-486L4.1, origin recognition complex, subunit 3

**Official Symbol:** ORC3

**Accession Number(s):** NP\_862820.1; NP\_036513.2; NP\_001184188.1

**Human GeneID(s):** [23595](#)

**Important Comments:** This antibody is expected to recognize reported isoforms NP\_862820.1, NP\_036513.2 and NP\_001184188.1.

### Immunogen

Peptide with sequence QKTDHVARLTWGGC, from the C Terminus of the protein sequence according to NP\_862820.1; NP\_036513.2; NP\_001184188.1.

Please note the [peptide](#) is available for sale.

### Purification and Storage

Purified from goat serum by ammonium sulphate precipitation followed by antigen affinity chromatography using the immunizing peptide.

Supplied at 0.5 mg/ml in Tris saline, 0.02% sodium azide, pH7.3 with 0.5% bovine serum albumin.

Aliquot and store at -20°C. Minimize freezing and thawing.

### Applications Tested

**Peptide ELISA:** antibody detection limit dilution 1:32000.

**Western blot:** Approx 75kDa band observed in lysates of cell lines HepG2 and HeLa (calculated MW of 82.3kDa according to NP\_862820.1 and NP\_036513.2).

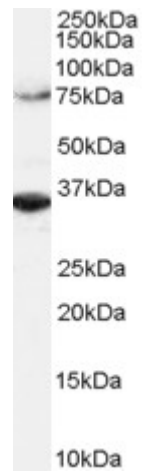
Recommended concentration: 1-3µg/ml. An additional band of unknown identity was also consistently observed at 35kDa. This band was successfully blocked by incubation with the immunising peptide.

**IHC:** Paraffin embedded Human Brain (Cortex). Recommended concentration: 3.75µg/ml.

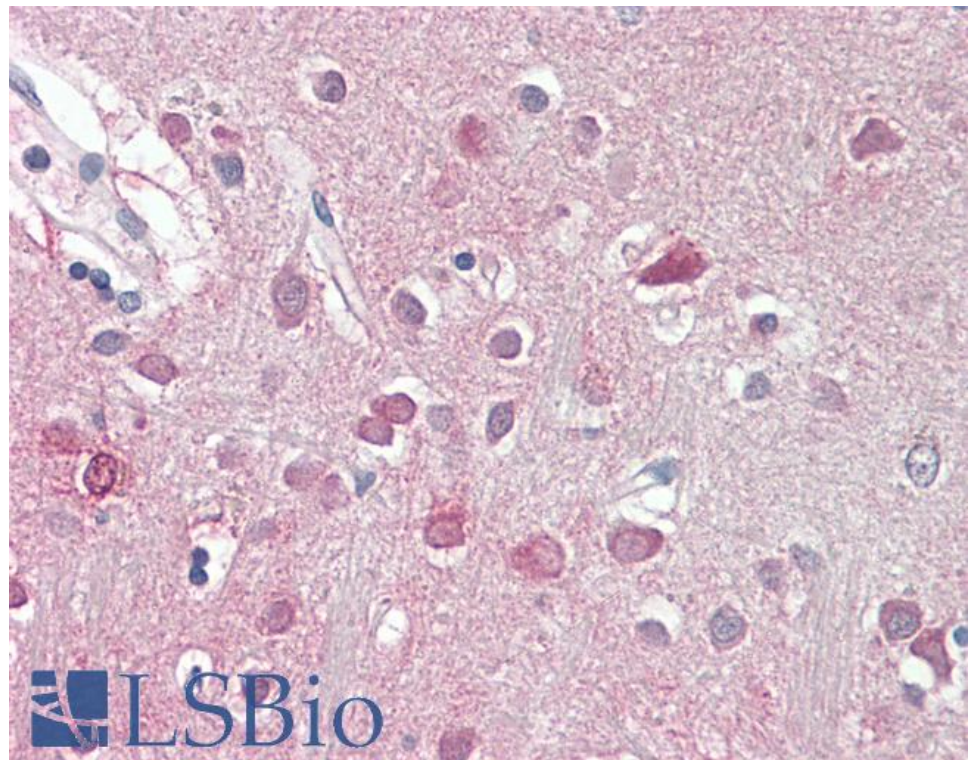
### Species Reactivity

**Tested:** Human

**Expected from sequence similarity:** Human, Mouse, Rat, Dog, Cow



EB05064 (2 $\mu$ g/ml) staining of Hela lysate (RIPA buffer, 1.4E5 cells per lane). Detected by chemiluminescence.



EB05064 (3.75 $\mu$ g/ml) staining of paraffin embedded Human Cortex. Steamed antigen retrieval with citrate buffer pH 6, AP-staining.