

## UK Office

### Everest Biotech Ltd

Cherwell Innovation Centre  
77 Heyford Park  
Upper Heyford  
Oxfordshire  
OX25 5HD  
UK

Enquiries:

[info@everestbiotech.com](mailto:info@everestbiotech.com)

Sales:

[sales@everestbiotech.com](mailto:sales@everestbiotech.com)

Tech support:

[support@everestbiotech.com](mailto:support@everestbiotech.com)

Tel: +44 (0)1869 238326

[www.everestbiotech.com](http://www.everestbiotech.com)

**Research Use Only. Not for  
diagnostic or therapeutic use.**

## EB05067 - Goat Anti-ORC4L Antibody

Size: 100µg specific antibody in 200µl



### Target Protein

**Principal Names:** ORC4L, origin recognition complex, subunit 4-like (yeast), Orc4p, HSORC4, origin recognition complex, subunit 4 (yeast homolog)-like, Origin recognition complex, subunit 4, S. cerevisiae, homolog-like, ORC4, ORC4P, origin recognition complex subunit 4, origin recognition complex, subunit 4 homolog

**Official Symbol:** ORC4

**Accession Number(s):** NP\_002543.2; NP\_001177810.1; NP\_001177811.1

**Human GeneID(s):** [5000](#)

**Non-Human GeneID(s):** 26428 (mouse), 295596 (rat)

**Important Comments:** This antibody is expected to recognize all reported isoforms (NP\_002543.2; NP\_001177810.1; NP\_001177811.1). Reported variants represent identical protein: NP\_002543.2, NP\_001177808.1, NP\_859526.1, NP\_859525.1

### Immunogen

Peptide with sequence C-DVRQWATSSLSWL, from the C Terminus of the protein sequence according to NP\_002543.2; NP\_001177810.1; NP\_001177811.1.

Please note the [peptide](#) is available for sale.

### Purification and Storage

Purified from goat serum by ammonium sulphate precipitation followed by antigen affinity chromatography using the immunizing peptide.

Supplied at 0.5 mg/ml in Tris saline, 0.02% sodium azide, pH7.3 with 0.5% bovine serum albumin.

Aliquot and store at -20°C. Minimize freezing and thawing.

### Applications Tested

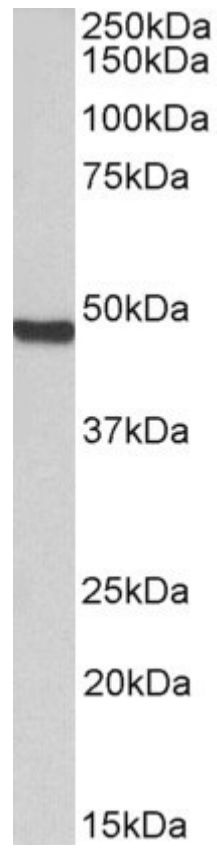
**Peptide ELISA:** antibody detection limit dilution 1:8000.

**Western blot:** Approx 48kDa band observed in nuclear lysates of cell line Jurkat (calculated MW of 50.4kDa according to Human NP\_002543.2 Recommended concentration: 0.3-1µg/ml. Primary incubation was 1 hour. Preliminary testing was unsuccessful on cell line NIH-3T3 and Mouse Heart for this particular batch.

### Species Reactivity

**Tested:** Human

**Expected from sequence similarity:** Human, Mouse, Rat, Dog, Cow



EB05067 (0.3 $\mu$ g/ml) staining of Jurkat nuclear lysate (35 $\mu$ g protein in RIPA buffer). Detected by chemiluminescence.