



UK Office

Everest Biotech Ltd

Cherwell Innovation Centre
77 Heyford Park
Upper Heyford
Oxfordshire
OX25 5HD
UK

Enquiries:

info@everestbiotech.com

Sales:

sales@everestbiotech.com

Tech support:

support@everestbiotech.com

Tel: +44 (0)1869 238326

Fax: +44 (0)1869 238327

US Office

Everest Biotech c/o Abcore

405 Maple Street, Suite A106
Ramona,
CA 92065
USA

Inquiries:

info@everestbiotech.com

Sales:

usasales@everestbiotech.com

Tech support:

support@everestbiotech.com

Tel: 888-320-4628 (toll-free)

Fax: 888-841-9041

www.everestbiotech.com

**Research Use Only. Not for
diagnostic or therapeutic use.**

EB05063 - Goat Anti-ORC6L Antibody

Size: 100µg specific antibody in 200µl



Target Protein

Principal Names: ORC6L, origin recognition complex, subunit 6 homolog-like (yeast), ORC6, origin recognition complex subunit 6, origin recognition complex, subunit 6-like (yeast), origin recognition complex, subunit 6 (yeast homolog)-like

Official Symbol: ORC6

Accession Number(s): NP_055136.1

Human GeneID(s): [23594](#)

Immunogen

Peptide with sequence C-ENAASAQKATAE, from the C Terminus of the protein sequence according to NP_055136.1.

Please note the [peptide](#) is available for sale.

Purification and Storage

Purified from goat serum by ammonium sulphate precipitation followed by antigen affinity chromatography using the immunizing peptide.

Supplied at 0.5 mg/ml in Tris saline, 0.02% sodium azide, pH7.3 with 0.5% bovine serum albumin.

Aliquot and store at -20°C. Minimize freezing and thawing.

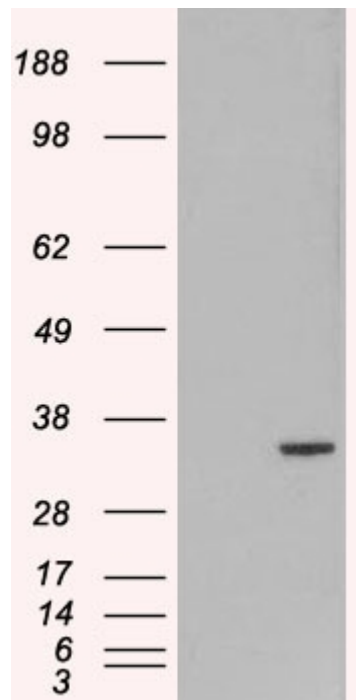
Applications Tested

Western blot: In transfected HEK293 transiently expressing ORC6L a band of approx. 33kDa is observed. This band is not observed in the non-transfected HEK293. The calculated molecular size is 28.1kDa according to NP_055136.1. Recommended concentration, 1-3µg/ml.

Species Reactivity

Tested: Human

Expected from sequence similarity: Human



HEK293 overexpressing ORC6L (RC209054) and probed with EB05036 (mock transfection in first lane), tested by Origene.