

International Office

Everest Biotech Ltd

Vector Laboratories, Inc.
6737 Mowry Ave
Newark, CA 94560
United States

Customer Service:

customerservice@vectorlabs.com

Technical Service:

technical@vectorlabs.com

Tel: +1 (800) 227-6666

www.everestbiotech.com

**Research Use Only. Not for
diagnostic or therapeutic use.**

EB06151 - Goat Anti-ORP1 Antibody

Size: 100µg specific antibody in 200µl



Target Protein

Principal Names: OSBPL1A, ORP1, OSBPL1B, FLJ10217, oxysterol binding protein-like 1A, OSBP-related protein 1, oxysterol-binding protein-like 1B, oxysterol-binding protein-related protein 1, ORP-1, oxysterol-binding protein-like 1A

Official Symbol: OSBPL1A

Accession Number(s): NP_060500.3; NP_542164.2

Human GeneID(s): [114876](#)

Non-Human GeneID(s): 64291 (mouse), 259221 (rat)

Important Comments: This antibody is expected to recognise both reported human isoforms of this protein.

Immunogen

Peptide with sequence C-YWDRNYFNLDPDIY, from the C Terminus of the protein sequence according to NP_060500.3; NP_542164.2.

Please note the [peptide](#) is available for sale.

Purification and Storage

Purified from goat serum by ammonium sulphate precipitation followed by antigen affinity chromatography using the immunizing peptide.

Supplied at 0.5 mg/ml in Tris saline, 0.02% sodium azide, pH7.3 with 0.5% bovine serum albumin.

Aliquot and store at -20°C. Minimize freezing and thawing.

Applications Tested

Peptide ELISA: antibody detection limit dilution 1:16000.

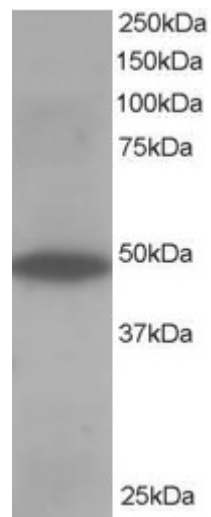
Western blot: Approx 48kDa band observed in Human Muscle lysate (predicted MW of 50kDa according to NP_060500.3). Recommended for use at 0.5-2µg/ml.

IHC: Paraffin embedded Human Brain (Cerebellum) and Human Skeletal Muscle. Recommended concentration: 5µg/ml.

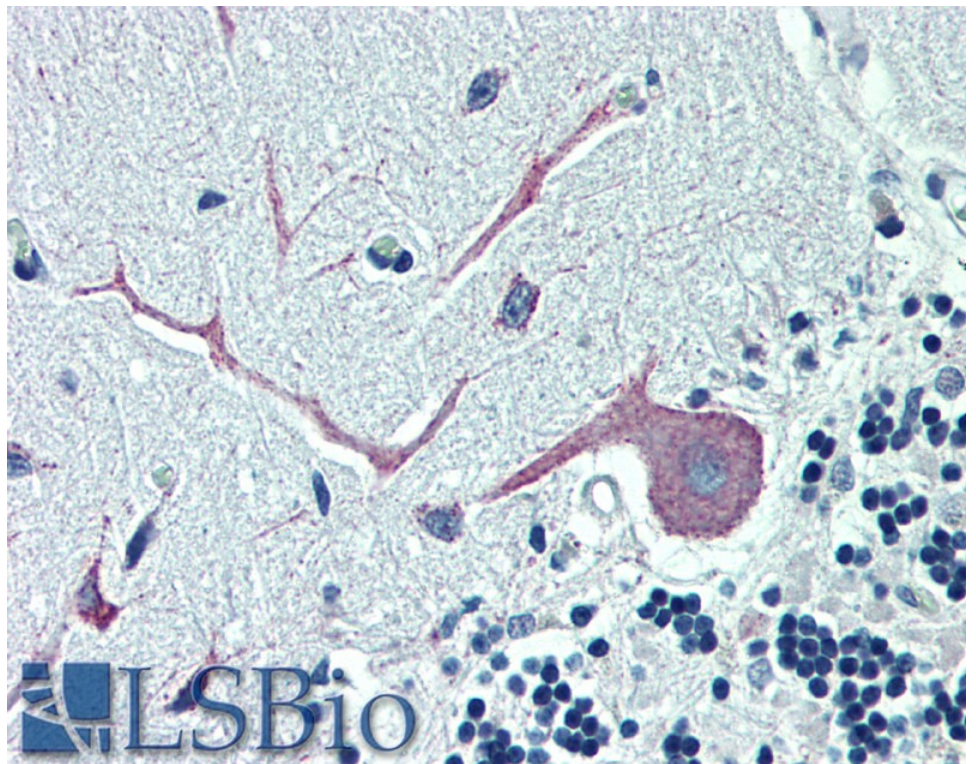
Species Reactivity

Tested: Human

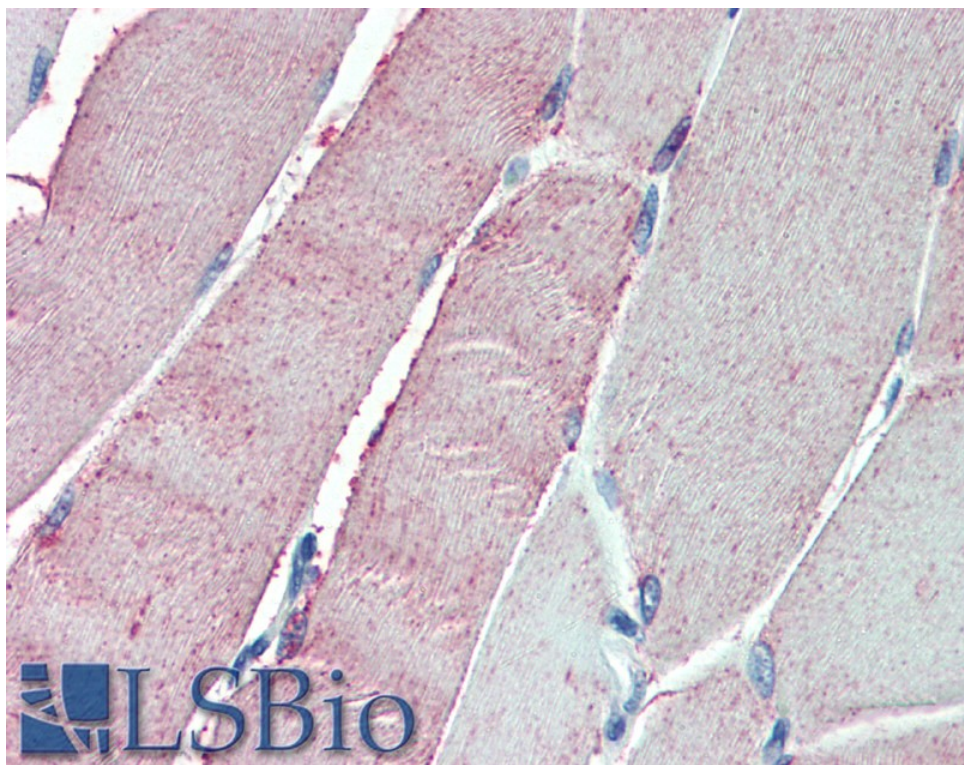
Expected from sequence similarity: Human, Mouse, Rat, Dog, Cow



EB06151 staining (0.5µg/ml) of Human Muscle lysate (RIPA buffer, 35µg total protein per lane). Primary incubated for 1 hour. Detected by chemiluminescence.



EB06151 (5µg/ml) staining of paraffin embedded Human Cerebellum. Steamed antigen retrieval with citrate buffer pH 6, AP-staining.



EB06151 (5µg/ml) staining of paraffin embedded Human Skeletal Muscle. Steamed antigen retrieval with citrate buffer pH 6, AP-staining.