

## UK Office

### Everest Biotech Ltd

Cherwell Innovation Centre  
77 Heyford Park  
Upper Heyford  
Oxfordshire  
OX25 5HD  
UK

Enquiries:

[info@everestbiotech.com](mailto:info@everestbiotech.com)

Sales:

[sales@everestbiotech.com](mailto:sales@everestbiotech.com)

Tech support:

[support@everestbiotech.com](mailto:support@everestbiotech.com)

Tel: +44 (0)1869 238326

[www.everestbiotech.com](http://www.everestbiotech.com)

**Research Use Only. Not for  
diagnostic or therapeutic use.**

## EB06152 - Goat Anti-ORP2 Antibody

Size: 100µg specific antibody in 200µl



### Target Protein

**Principal Names:** OSBPL2, ORP2, ORP-2, MGC4307, MGC8342, FLJ20223, KIAA0772, oxysterol binding protein-like 2, OSBP-related protein 2, oxysterol-binding protein-related protein 2, oxysterol-binding protein-like protein 2

**Official Symbol:** OSBPL2

**Accession Number(s):** NP\_055650.1; NP\_653081.1

**Human GeneID(s):** [9885](#)

**Non-Human GeneID(s):** 228983 (mouse)

**Important Comments:** This antibody is expected to recognise both reported isoforms (represented by NP\_055650.1 and NP\_653081.1)

### Immunogen

Peptide with sequence YFERNFSDCPDIY, from the C Terminus of the protein sequence according to NP\_055650.1; NP\_653081.1.

Please note the [peptide](#) is available for sale.

### Purification and Storage

Purified from goat serum by ammonium sulphate precipitation followed by antigen affinity chromatography using the immunizing peptide.

Supplied at 0.5 mg/ml in Tris saline, 0.02% sodium azide, pH7.3 with 0.5% bovine serum albumin.

Aliquot and store at -20°C. Minimize freezing and thawing.

### Applications Tested

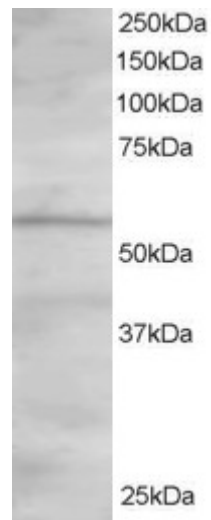
**Peptide ELISA:** antibody detection limit dilution 1:8000.

**Western blot:** Approx 55-60kDa band observed in Human Heart lysates (predicted MWs of 54 and 55kDa according to NP\_055650.1 and NP\_653081.1). Recommended for use at 1-2µg/ml.

### Species Reactivity

**Tested:** Human

**Expected from sequence similarity:** Human, Mouse, Rat



EB06152 staining (1.5 $\mu$ g/ml) of Human Heart lysate (RIPA buffer, 30 $\mu$ g total protein per lane). Primary incubated for 1 hour. Detected by western blot using chemiluminescence.