



## UK Office

### Everest Biotech Ltd

Cherwell Innovation Centre  
77 Heyford Park  
Upper Heyford  
Oxfordshire  
OX25 5HD  
UK

Enquiries:

[info@everestbiotech.com](mailto:info@everestbiotech.com)

Sales:

[sales@everestbiotech.com](mailto:sales@everestbiotech.com)

Tech support:

[support@everestbiotech.com](mailto:support@everestbiotech.com)

Tel: +44 (0)1869 238326

Fax: +44 (0)1869 238327

## US Office

### Everest Biotech c/o Abcore

405 Maple Street, Suite A106  
Ramona,  
CA 92065  
USA

Inquiries:

[info@everestbiotech.com](mailto:info@everestbiotech.com)

Sales:

[usasales@everestbiotech.com](mailto:usasales@everestbiotech.com)

Tech support:

[support@everestbiotech.com](mailto:support@everestbiotech.com)

Tel: 888-320-4628 (toll-free)

Fax: 888-841-9041

[www.everestbiotech.com](http://www.everestbiotech.com)

**Research Use Only. Not for  
diagnostic or therapeutic use.**

## EB06154 - Goat Anti-ORP5 (OBPH1) Antibody

Size: 100µg specific antibody in 200µl



### Target Protein

**Principal Names:** OSBPL5, ORP5, OBPH1, FLJ31948, KIAA1534, DKFZp586H1719, oxysterol binding protein-like 5, OSBP-related protein 5, oxysterol-binding protein homologue 1, oxysterol-binding protein-related protein 5, FLJ42929, oxysterol-binding protein-like protein 5

**Official Symbol:** OSBPL5

**Accession Number(s):** NP\_065947.1; NP\_663613.1; NP\_001137535.1

**Human GeneID(s):** [114879](#)

**Non-Human GeneID(s):** 79196 (mouse)

**Important Comments:** This antibody is expected to recognise both reported isoforms. Variants (NP\_663613.1; NP\_001137535.1) encode the same isoform.

### Immunogen

Peptide with sequence KEEAFLRRRFSLC, from the N Terminus of the protein sequence according to NP\_065947.1; NP\_663613.1; NP\_001137535.1.

Please note the [peptide](#) is available for sale.

### Purification and Storage

Purified from goat serum by ammonium sulphate precipitation followed by antigen affinity chromatography using the immunizing peptide.

Supplied at 0.5 mg/ml in Tris saline, 0.02% sodium azide, pH7.3 with 0.5% bovine serum albumin.

Aliquot and store at -20°C. Minimize freezing and thawing.

### Applications Tested

**Peptide ELISA:** antibody detection limit dilution 1:32000.

**Western blot:** Approx. 100kDa band observed in lysates of cell line Jurkat and in Rat Spleen lysates (calculated MW of 98.4kDa according to Human NP\_065947.1 and 101.7kDa according to Rat NP\_001015024.2). Recommended concentration: 0.03=0.3µg/ml. Primary incubation 1 hour at room temperature.

**IHC:** Paraffin embedded Human Kidney and Liver. Recommended concentration: 5µg/ml.

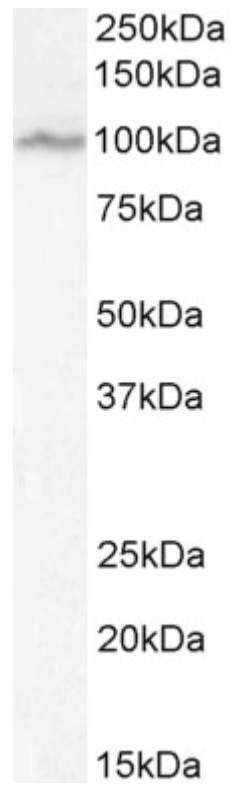
**Immunofluorescence:** Strong expression of the protein seen in the cytoplasm of HeLa and U2OS cells. Recommended concentration: 10µg/ml.

**Flow Cytometry:** Flow cytometric analysis of HeLa cells. Recommended concentration: 10ug/ml.

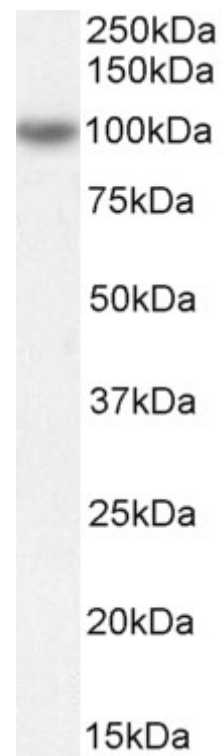
### Species Reactivity

**Tested:** Human, Rat

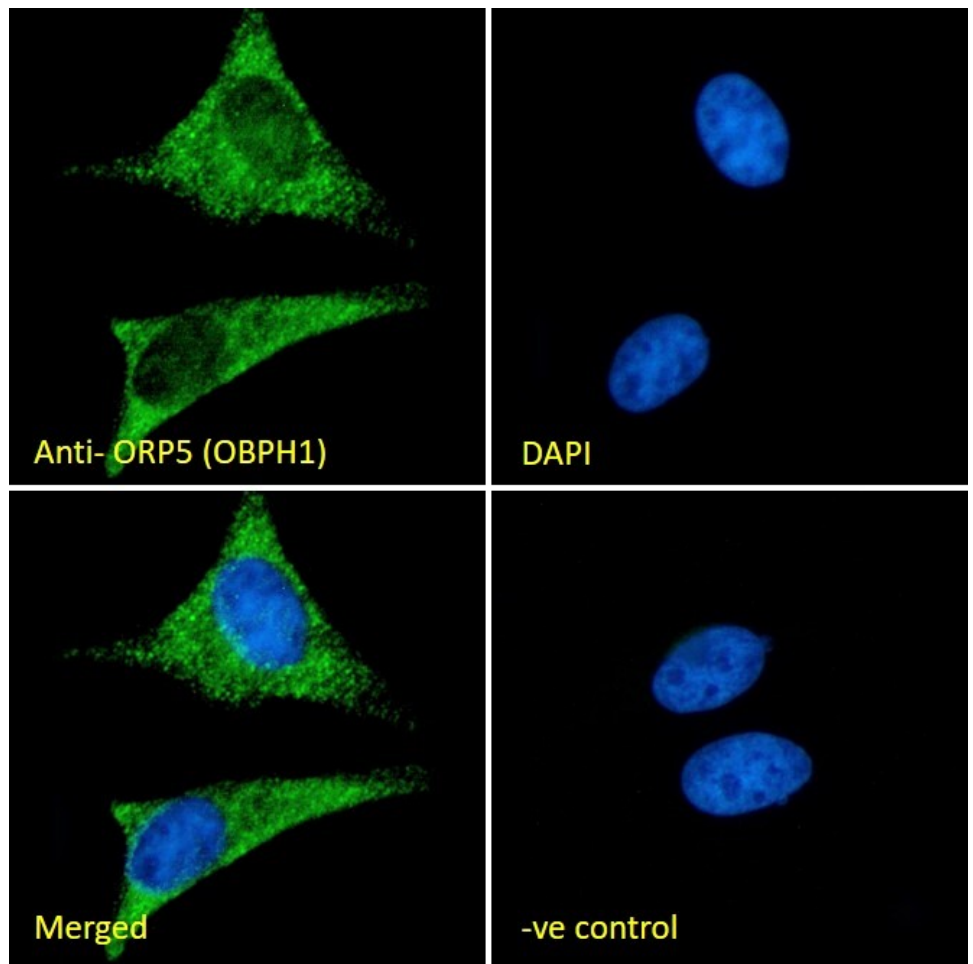
**Expected from sequence similarity:** Human, Mouse, Rat, Dog



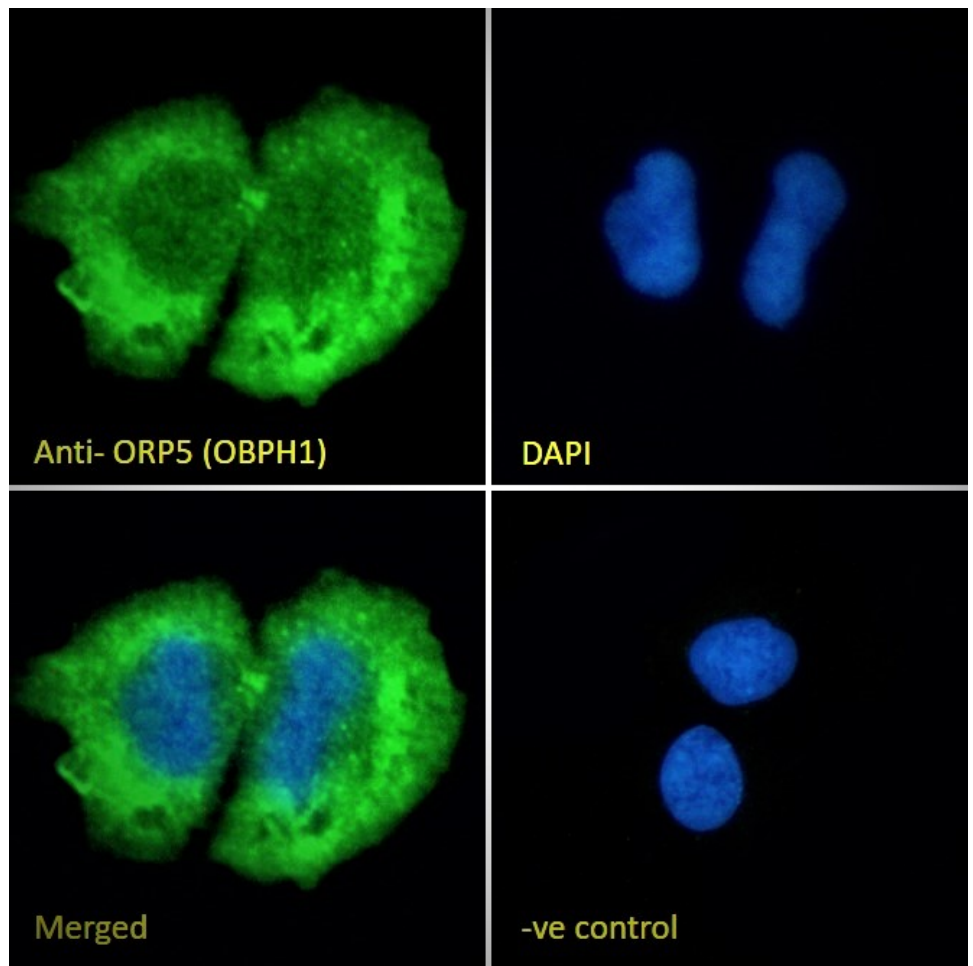
EB06154 (0.1 $\mu$ g/ml) staining of Jurkat cell lysate (35 $\mu$ g protein in RIPA buffer). Detected by chemiluminescence.



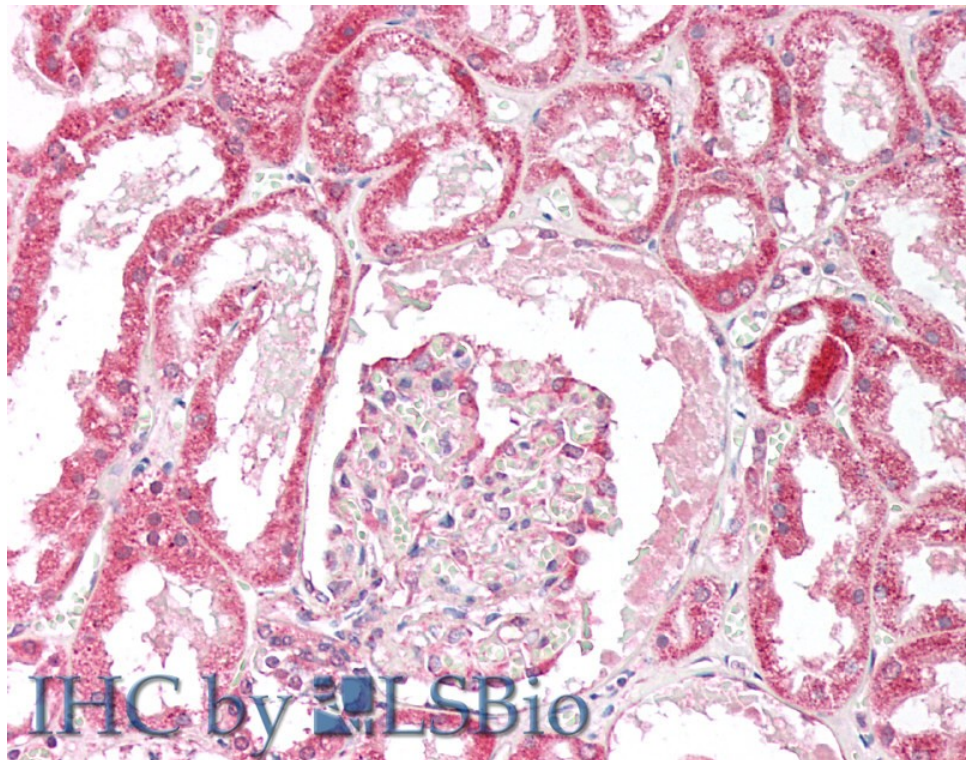
EB06154 (0.3 $\mu$ g/ml) staining of Rat Spleen lysate (35 $\mu$ g protein in RIPA buffer). Detected by chemiluminescence.



EB06154 Immunofluorescence analysis of paraformaldehyde fixed HeLa cells, permeabilized with 0.15% Triton. Primary incubation 1hr (10ug/ml) followed by Alexa Fluor 488 secondary antibody (2ug/ml), showing cytoplasmic staining. The nuclear stain is DAPI (blue). Negative control: Unimmunized goat IgG (10ug/ml) followed by Alexa Fluor 488 secondary antibody (2ug/ml).

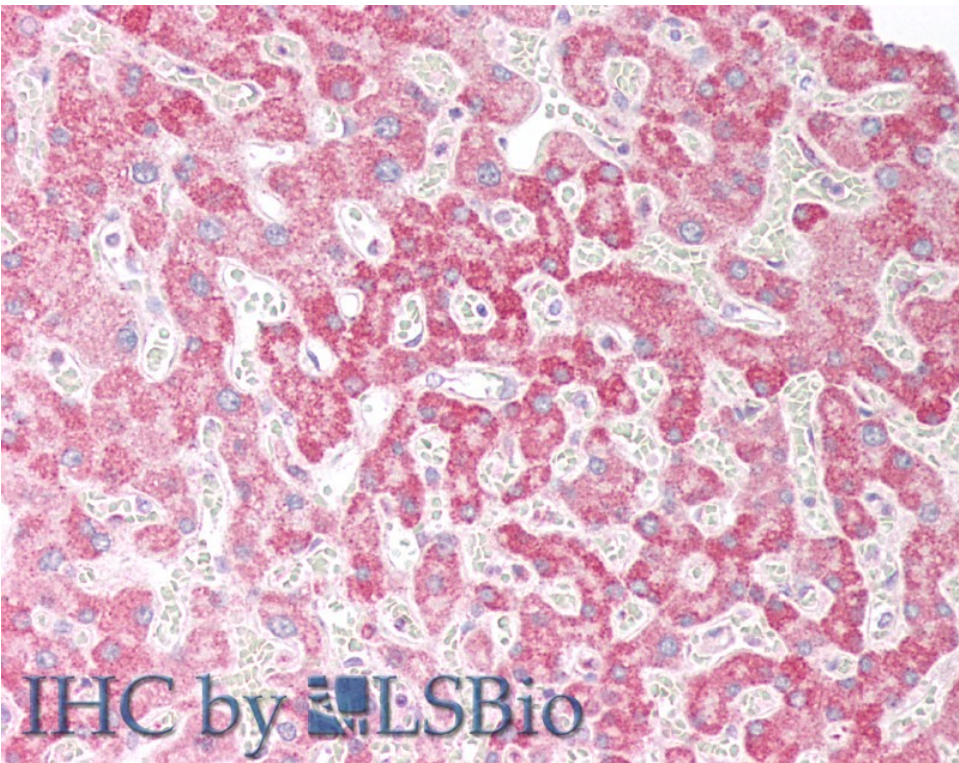


EB06154 Immunofluorescence analysis of paraformaldehyde fixed U2OS cells, permeabilized with 0.15% Triton. Primary incubation 1hr (10ug/ml) followed by Alexa Fluor 488 secondary antibody (2ug/ml), showing cytoplasmic staining. The nuclear stain is DAPI (blue). Negative control: Unimmunized goat IgG (10ug/ml) followed by Alexa Fluor 488 secondary antibody (2ug/ml).

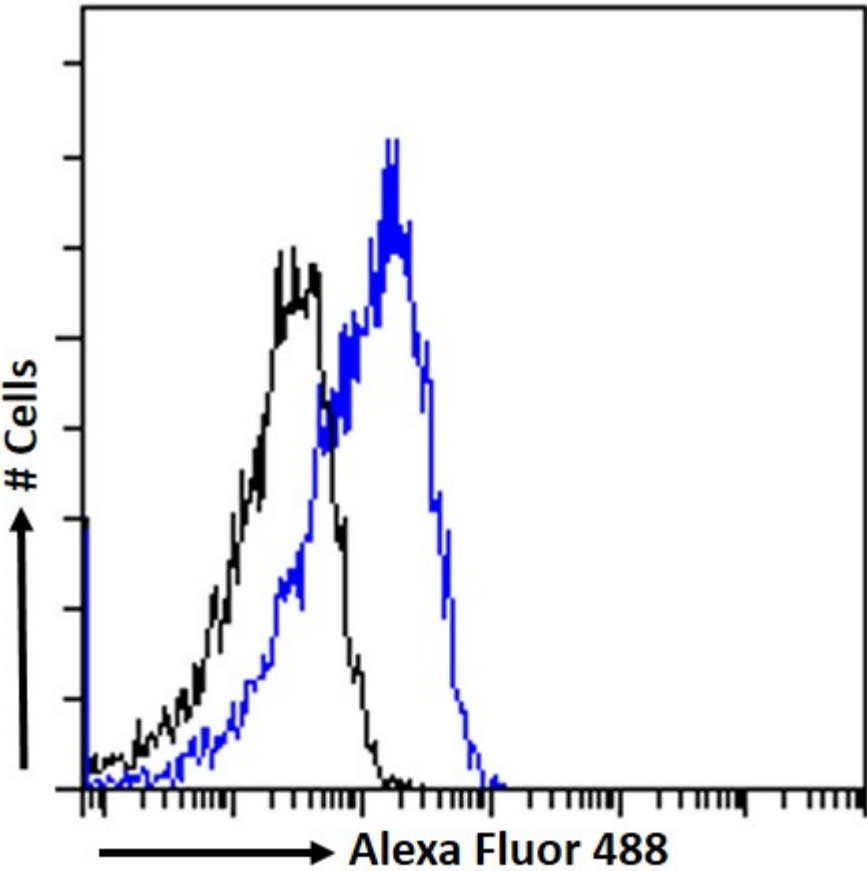




EB06154 (5µg/ml) staining of paraffin embedded Human Kidney. Steamed antigen retrieval with citrate buffer pH 6, AP-staining.



EB06154 (5µg/ml) staining of paraffin embedded Human Liver. Steamed antigen retrieval with citrate buffer pH 6, AP-staining.



EB06154 Flow cytometric analysis of paraformaldehyde fixed HeLa cells (blue line), permeabilized with 0.5% Triton. Primary incubation 1hr (10ug/ml) followed by Alexa Fluor 488 secondary antibody (1ug/ml). IgG control: Unimmunized goat IgG (black line) followed by Alexa Fluor 488 secondary antibody.