

UK Office

Everest Biotech Ltd

Cherwell Innovation Centre
77 Heyford Park
Upper Heyford
Oxfordshire
OX25 5HD
UK

Enquiries:

info@everestbiotech.com

Sales:

sales@everestbiotech.com

Tech support:

support@everestbiotech.com

Tel: +44 (0)1869 238326

Fax: +44 (0)1869 238327

US Office

Everest Biotech c/o Abcore

405 Maple Street, Suite A106
Ramona,
CA 92065
USA

Inquiries:

info@everestbiotech.com

Sales:

usasales@everestbiotech.com

Tech support:

support@everestbiotech.com

Tel: 888-320-4628 (toll-free)

Fax: 888-841-9041

www.everestbiotech.com

**Research Use Only. Not for
diagnostic or therapeutic use.**

EB06158 - Goat Anti-ORP9 / OSBPL9 Antibody

Size: 100µg specific antibody in 200µl



Target Protein

Principal Names: OSBPL9, ORP9, FLJ12492, FLJ14629, FLJ14801, FLJ32055, FLJ34384, MGC15035, oxysterol binding protein-like 9, OSBP-related protein 9, oxysterol-binding protein-related protein 9

Official Symbol: OSBPL9

Accession Number(s): NP_078862.4; NP_683702.1; NP_683704.2; NP_683705.1; NP_683706.3; NP_683707.3

Human GeneID(s): [114883](#)

Important Comments: This antibody is expected to recognise all six human isoforms (NP_078862.4; NP_683702.1; NP_683704.2; NP_683705.1; NP_683706.3; NP_683707.3). Reported variants represent identical protein (NP_683702.1; NP_683703.1).

Immunogen

Peptide with sequence C-EPLLKRLGAAKH, from the C Terminus of the protein sequence according to NP_078862.4; NP_683702.1; NP_683704.2; NP_683705.1; NP_683706.3; NP_683707.3.

Please note the [peptide](#) is available for sale.

Purification and Storage

Purified from goat serum by ammonium sulphate precipitation followed by antigen affinity chromatography using the immunizing peptide.

Supplied at 0.5 mg/ml in Tris saline, 0.02% sodium azide, pH7.3 with 0.5% bovine serum albumin.

Aliquot and store at -20°C. Minimize freezing and thawing.

Applications Tested

Peptide ELISA: antibody detection limit dilution 1:32000.

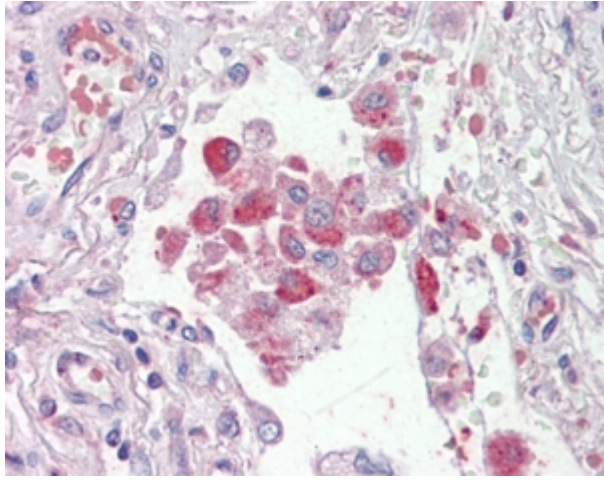
Western blot: Preliminary experiments gave bands at approx 150kDa and 19kDa in lysates of Human Brain, and Testis and 55kDa in lysates of Human Placenta and Testes after 0.5 µg/ml antibody staining. Please note that currently we cannot find an explanation in the literature for the bands we observe given the different calculated sizes of the six reported isoforms (a: 62.5kDa for NP_683702.1 and NP_683703.1; b: 63.9kDa for NP_683704.1; c: 70.2kDa for NP_683705.1; d: 81.8kDa for NP_683706.1; e: 83.2 kDa for NP_078862.2; f: 84.3kDa for NP_683707.1). All detected bands were successfully blocked by incubation with the immunizing peptide (and BLAST results with the immunizing peptide sequence did not identify any other proteins to explain the additional bands). We would appreciate any feedback from people in the field - have any results been reported with other antibodies/lysates? Have any further splice variants/modified forms been reported?

IHC: In paraffin embedded Human Lung shows staining of alveolar macrophages. . Recommended concentration, 2-4µg/ml.

Species Reactivity

Tested: Human

Expected from sequence similarity: Human, Mouse, Rat, Dog, Pig, Cow



EB06158 (2.5µg/ml) staining of paraffin embedded Human Lung. Steamed antigen retrieval with citrate buffer pH 6, AP-staining.