



UK Office

Everest Biotech Ltd

Cherwell Innovation Centre
77 Heyford Park
Upper Heyford
Oxfordshire
OX25 5HD
UK

Enquiries:

info@everestbiotech.com

Sales:

sales@everestbiotech.com

Tech support:

support@everestbiotech.com

Tel: +44 (0)1869 238326

www.everestbiotech.com

**Research Use Only. Not for
diagnostic or therapeutic use.**

EB09898 - Goat Anti-OSMR Antibody

Size: 100µg specific antibody in 200µl



Target Protein

Principal Names: MGC150626, MGC150627, MGC75127, oncostatin M receptor, OSMRB, OSMR

Official Symbol: OSMR

Accession Number(s): NP_003990.1; NP_001161827.1; NP_001310435.1; NP_001310436.1

Human GeneID(s): [9180](#)

Non-Human GeneID(s): 18414 (mouse)

Important Comments: The immunizing peptide represents part of the extracellular domain.

Immunogen

Peptide with sequence C-QIHGEQLDPHVT, from the internal region of the protein sequence according to NP_003990.1; NP_001161827.1; NP_001310435.1; NP_001310436.1.

Please note the [peptide](#) is available for sale.

Purification and Storage

Purified from goat serum by ammonium sulphate precipitation followed by antigen affinity chromatography using the immunizing peptide.

Supplied at 0.5 mg/ml in Tris saline, 0.02% sodium azide, pH7.3 with 0.5% bovine serum albumin.

Aliquot and store at -20°C. Minimize freezing and thawing.

Applications Tested

Peptide ELISA: antibody detection limit dilution 1:128000.

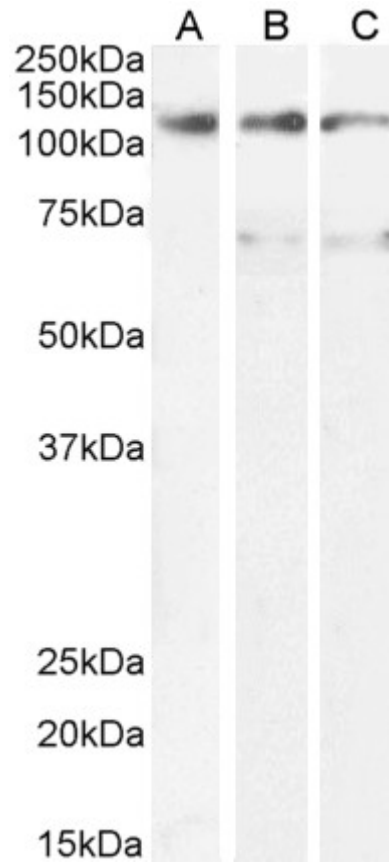
Western blot: Approx 125kDa band observed in lysates of cell line U937 and approx 70+125kDa in lysates of cell line A431 and HepG2 (calculated MW of 111kDa according to NP_003990.1 (isoform 1) and NP_001310435.1 (isoform 3), and 66.0kDa according to NP_001310436.1 (isoform 4)). Recommended concentration: 0.3-1µg/ml. Primary incubation 1 hour at room temperature.

Flow Cytometry: Flow cytometric analysis of HeLa cells. Recommended concentration: 10ug/ml.

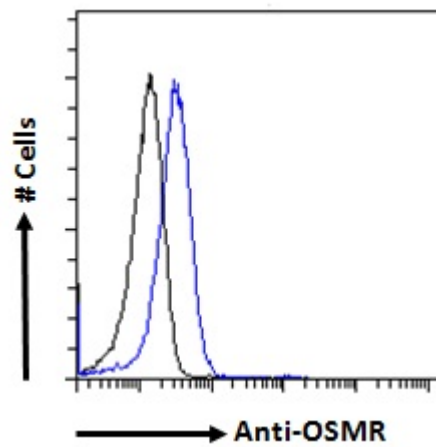
Species Reactivity

Tested: Human

Expected from sequence similarity: Human



EB09898 (1 μ g/ml) staining of U937 (A) and (0.3 μ g/ml) A431 (B) and HepG2 (C) cell lysate (35 μ g protein in RIPA buffer). Detected by chemiluminescence.



EB09898 Flow cytometric analysis of paraformaldehyde fixed HeLa cells (blue line), permeabilized with 0.5% Triton. Primary incubation 1hr (10 μ g/ml) followed by Alexa Fluor 488 secondary antibody (1 μ g/ml). IgG control: Unimmunized goat IgG (black line) followed by Alexa Fluor 488 secondary antibody.