



## UK Office

### Everest Biotech Ltd

Cherwell Innovation Centre  
77 Heyford Park  
Upper Heyford  
Oxfordshire  
OX25 5HD  
UK

Enquiries:

[info@everestbiotech.com](mailto:info@everestbiotech.com)

Sales:

[sales@everestbiotech.com](mailto:sales@everestbiotech.com)

Tech support:

[support@everestbiotech.com](mailto:support@everestbiotech.com)

Tel: +44 (0)1869 238326

[www.everestbiotech.com](http://www.everestbiotech.com)

**Research Use Only. Not for  
diagnostic or therapeutic use.**

## EB06825 - Goat Anti-Osteopontin / SPP1 Antibody

Size: 100µg specific antibody in 200µl



### Target Protein

**Principal Names:** SPP1, HGNC:11255, secreted phosphoprotein 1 (osteopontin, bone sialoprotein I, early T-lymphocyte activation 1), BNSP, BSPI, ETA-1, MGC110940, OPN, Secreted phosphoprotein-1 (osteopontin, bone sialoprotein), secreted phosphoprotein 1, SPP1/CALPHA1 fusion, bone sialoprotein I, early T-lymphocyte activation 1, osteopontin, osteopontin/immunoglobulin alpha 1 heavy chain constant region fusion protein

**Official Symbol:** SPP1

**Accession Number(s):** NP\_001035147.1; NP\_000573.1; NP\_001035149.1

**Human GeneID(s):** [6696](#)

**Non-Human GeneID(s):** 20750 (mouse)

### Immunogen

Peptide with sequence C-DPKSKEEDKHLK, from the C Terminus of the protein sequence according to NP\_001035147.1; NP\_000573.1; NP\_001035149.1.

Please note the [peptide](#) is available for sale.

### Purification and Storage

Purified from goat serum by ammonium sulphate precipitation followed by antigen affinity chromatography using the immunizing peptide.

Supplied at 0.5 mg/ml in Tris saline, 0.02% sodium azide, pH7.3 with 0.5% bovine serum albumin.

Aliquot and store at -20°C. Minimize freezing and thawing.

### Applications Tested

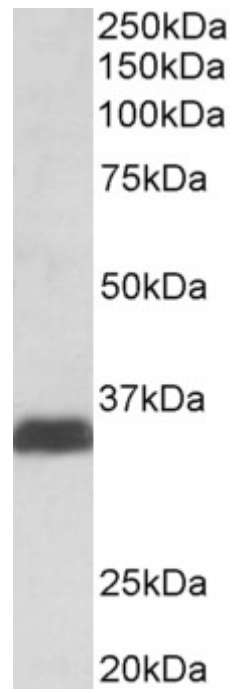
**Peptide ELISA:** antibody detection limit dilution 1:32000.

**Western blot:** Approx 35kDa band observed in lysates of cell line MOLT4. This band corresponds to the cleavage product from the 60kDa glycoprotein (calculated MW of 33.8kDa according to NP\_000573.1). Recommended concentration: 0.1-0.3µg/ml.

### Species Reactivity

**Tested:** Human

**Expected from sequence similarity:** Human, Mouse, Rat, Dog



EB06825 (0.1µg/ml) staining of lysates of cell line MOLT4 (35µg protein in RIPA buffer). Primary incubation was 1 hour. Detected by chemiluminescence.