



UK Office

Everest Biotech Ltd

Cherwell Innovation Centre
77 Heyford Park
Upper Heyford
Oxfordshire
OX25 5HD
UK

Enquiries:

info@everestbiotech.com

Sales:

sales@everestbiotech.com

Tech support:

support@everestbiotech.com

Tel: +44 (0)1869 238326

www.everestbiotech.com

**Research Use Only. Not for
diagnostic or therapeutic use.**

EB08653 - Goat Anti-OTUB1 Antibody

Size: 100µg specific antibody in 200µl



Target Protein

Principal Names: OTUB1, OTU domain, ubiquitin aldehyde binding 1, FLJ20113, FLJ40710, HSPC263, MGC111158, MGC4584, OTB1, OTU1, OTU-domain Ubal-binding 1, otubain 1, ubiquitin-specific protease otubain 1

Official Symbol: OTUB1

Accession Number(s): NP_060140.2

Human GeneID(s): [55611](#)

Non-Human GeneID(s): 107260 (mouse), 293705 (rat)

Immunogen

Peptide with sequence C-YKEYAEDDNIYQQK, from the internal region of the protein sequence according to NP_060140.2.

Please note the [peptide](#) is available for sale.

Purification and Storage

Purified from goat serum by ammonium sulphate precipitation followed by antigen affinity chromatography using the immunizing peptide.

Supplied at 0.5 mg/ml in Tris saline, 0.02% sodium azide, pH7.3 with 0.5% bovine serum albumin.

Aliquot and store at -20°C. Minimize freezing and thawing.

Applications Tested

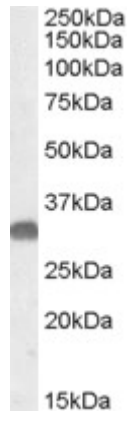
Peptide ELISA: antibody detection limit dilution 1:64000.

Western blot: Approx. 30kDa band observed in Mouse Brain lysates (calculated MW of 31.3kDa according to Human NP_060140.2 and Mouse NP_598911.1). Recommended concentration: 0.03-0.1µg/ml.

Species Reactivity

Tested: Mouse

Expected from sequence similarity: Human, Mouse, Rat, Cow



EB08653 (0.05 μ g/ml) staining of Mouse Brain lysate (35 μ g protein in RIPA buffer). Primary incubation was 1 hour. Detected by chemiluminescence.