



## International Office

### Everest Biotech Ltd

Vector Laboratories, Inc.  
6737 Mowry Ave  
Newark, CA 94560  
United States

Customer Service:

[customerservice@vectorlabs.com](mailto:customerservice@vectorlabs.com)

Technical Service:

[technical@vectorlabs.com](mailto:technical@vectorlabs.com)

Tel: +1 (800) 227-6666

[www.everestbiotech.com](http://www.everestbiotech.com)

**Research Use Only. Not for  
diagnostic or therapeutic use.**

## EB08654 - Goat Anti-OTUB2 Antibody

Size: 100µg specific antibody in 200µl



### Target Protein

**Principal Names:** OTUB2, OTU domain, ubiquitin aldehyde binding 2, C14orf137, FLJ21916, MGC3102, OTB2, OTU2, ubiquitin-specific protease otubain 2

**Official Symbol:** OTUB2

**Accession Number(s):** NP\_075601.1

**Human GeneID(s):** [78990](#)

**Non-Human GeneID(s):** 68149 (mouse), 314405 (rat)

### Immunogen

Peptide with sequence C-YKTSHYNILYAADKH, from the internal region of the protein sequence according to NP\_075601.1.

Please note the [peptide](#) is available for sale.

### Purification and Storage

Purified from goat serum by ammonium sulphate precipitation followed by antigen affinity chromatography using the immunizing peptide.

Supplied at 0.5 mg/ml in Tris saline, 0.02% sodium azide, pH7.3 with 0.5% bovine serum albumin.

Aliquot and store at -20°C. Minimize freezing and thawing.

### Applications Tested

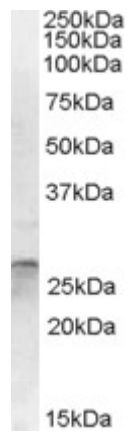
**Peptide ELISA:** antibody detection limit dilution 1:16000.

**Western blot:** Approx. 27kDa band observed in Human Brain (Cerebellum) lysates (calculated MW of 27.2kDa according to NP\_075601.1). Recommended concentration: 1-3µg/ml.

### Species Reactivity

**Tested:** Human

**Expected from sequence similarity:** Human, Mouse, Rat, Cow



EB08654 (1µg/ml) staining of Human Cerebellum lysate (35µg protein in RIPA buffer). Primary incubation was 1 hour. Detected by chemiluminescence.