



UK Office

Everest Biotech Ltd

Cherwell Innovation Centre
77 Heyford Park
Upper Heyford
Oxfordshire
OX25 5HD
UK

Enquiries:

info@everestbiotech.com

Sales:

sales@everestbiotech.com

Tech support:

support@everestbiotech.com

Tel: +44 (0)1869 238326

www.everestbiotech.com

**Research Use Only. Not for
diagnostic or therapeutic use.**

EB09121 - Goat Anti-OTUD4 Antibody

Size: 100µg specific antibody in 200µl



Target Protein

Principal Names: OTUD4, OTU domain containing 4, DKFZp434I0721, DUBA6, HIN1, HSHIN1, KIAA1046, HIV-1 induced protein HIN-1, OTU domain containing 4 protein

Official Symbol: OTUD4

Accession Number(s): NP_955356.1; NP_001096123.1; NP_001352986.1

Human GeneID(s): [54726](#)

Non-Human GeneID(s): 73945 (mouse), 307774 (rat)

Important Comments: This antibody is expected to recognize reported isoforms 1 (NP_955356.1), 3 (NP_001096123.1), and 4 (NP_001352986.1).

Immunogen

Peptide with sequence C-SRSRDEGYQYHRNVR, from the C Terminus (near) of the protein sequence according to NP_955356.1; NP_001096123.1; NP_001352986.1.

Please note the [peptide](#) is available for sale.

Purification and Storage

Purified from goat serum by ammonium sulphate precipitation followed by antigen affinity chromatography using the immunizing peptide.

Supplied at 0.5 mg/ml in Tris saline, 0.02% sodium azide, pH7.3 with 0.5% bovine serum albumin.

Aliquot and store at -20°C. Minimize freezing and thawing.

Applications Tested

Peptide ELISA: antibody detection limit dilution 1:8000.

Western blot: Preliminary testing showed a band at approx. 110kDa in Human Skeletal Muscle lysate after 2ug/ml antibody staining. (calculated MW of 117kDa according to NP_955356.1). This band was successfully blocked by incubation with the immunizing peptide. Primary incubation 1 hour at room temperature.

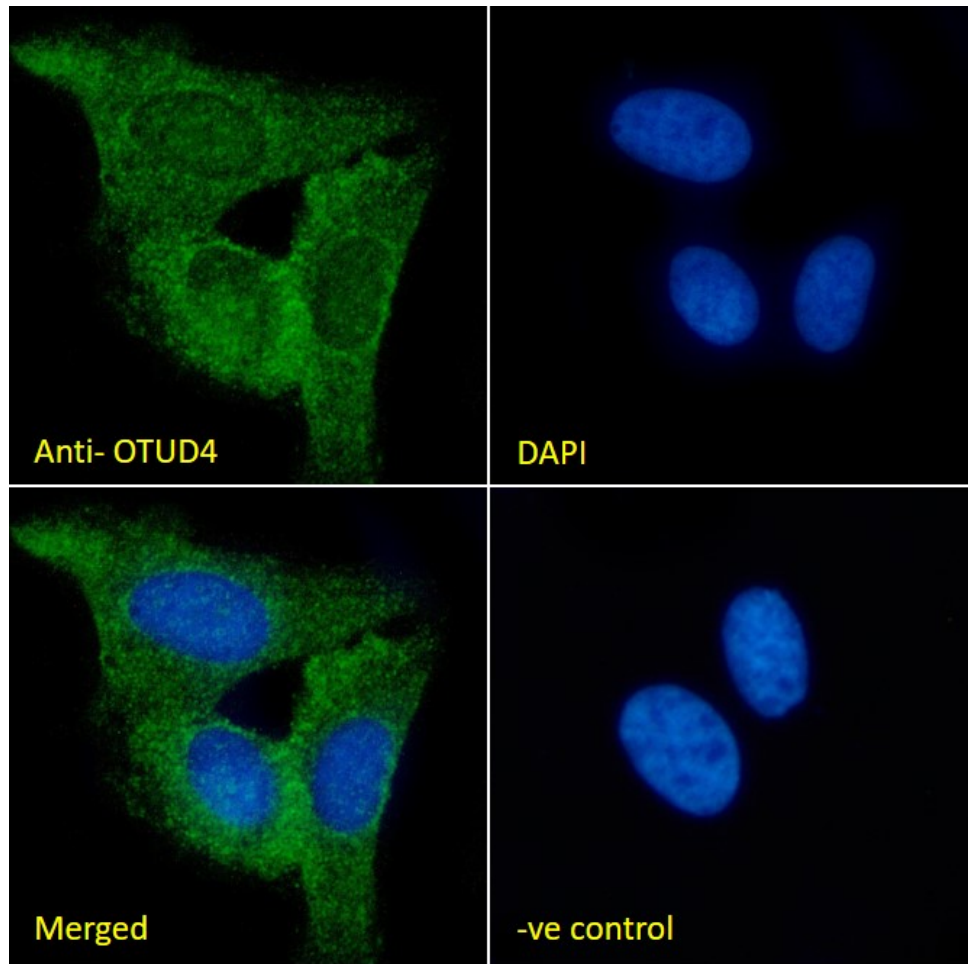
Immunofluorescence: Strong expression of the protein seen in A413 and U2OS cells. Recommended concentration: 10µg/ml.

Flow Cytometry: Flow cytometric analysis of A431 cells. Recommended concentration: 10ug/ml.

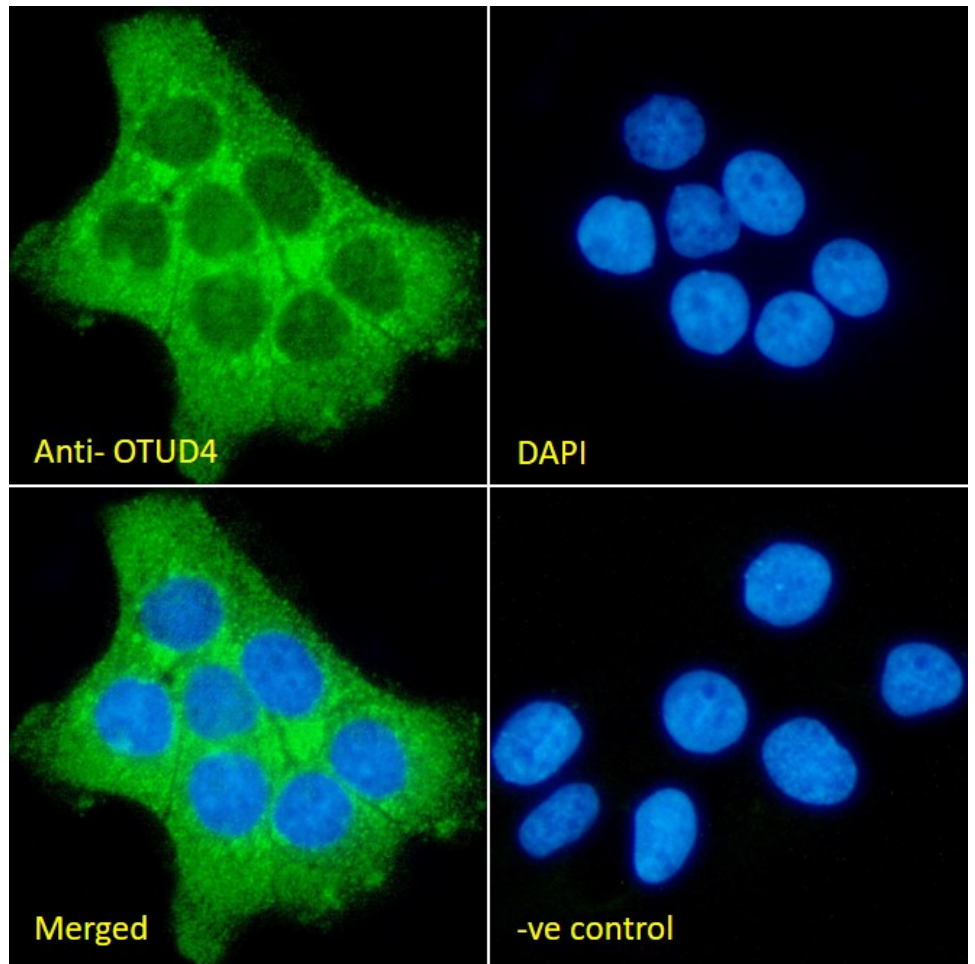
Species Reactivity

Tested: Human

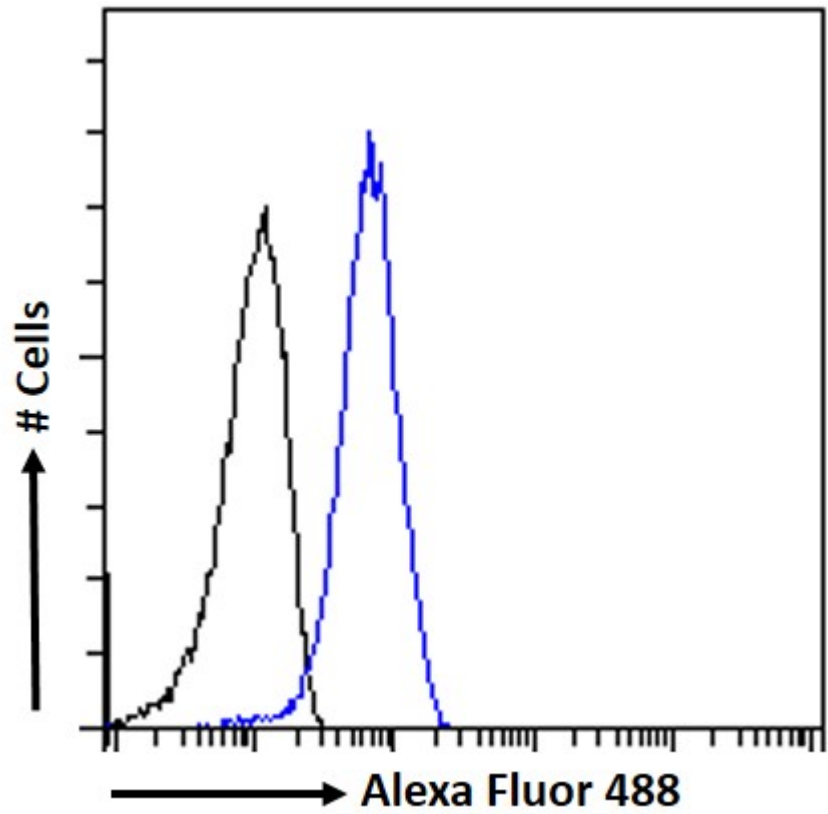
Expected from sequence similarity: Human



EB09121 Immunofluorescence analysis of paraformaldehyde fixed U2OS cells, permeabilized with 0.15% Triton. Primary incubation 1hr (10ug/ml) followed by Alexa Fluor 488 secondary antibody (2ug/ml), showing strong cytoplasmic and some nuclear staining. The nuclear stain is DAPI (blue). Negative control: Unimmunized goat IgG (10ug/ml) followed by Alexa Fluor 488 secondary antibody (2ug/ml).



EB09121 Immunofluorescence analysis of paraformaldehyde fixed A431 cells, permeabilized with 0.15% Triton. Primary incubation 1hr (10ug/ml) followed by Alexa Fluor 488 secondary antibody (2ug/ml), showing cytoplasmic staining. The nuclear stain is DAPI (blue). Negative control: Unimmunized goat IgG (10ug/ml) followed by Alexa Fluor 488 secondary antibody (2ug/ml).



EB09121 Flow cytometric analysis of paraformaldehyde fixed A431 cells (blue line), permeabilized with 0.5% Triton. Primary incubation 1hr (10ug/ml) followed by Alexa Fluor 488 secondary antibody (1ug/ml). IgG control: Unimmunized goat IgG (black line) followed by Alexa Fluor 488 secondary antibody.