

UK Office

Everest Biotech Ltd

Cherwell Innovation Centre
77 Heyford Park
Upper Heyford
Oxfordshire
OX25 5HD
UK

Enquiries:

info@everestbiotech.com

Sales:

sales@everestbiotech.com

Tech support:

support@everestbiotech.com

Tel: +44 (0)1869 238326

www.everestbiotech.com

**Research Use Only. Not for
diagnostic or therapeutic use.**

EB10894 - Goat Anti-OXER1 (aa389-400) Antibody

Size: 100µg specific antibody in 200µl



Target Protein

Principal Names: OXER1, oxoeicosanoid (OXE) receptor 1, GPCR, GPR170, TG1019, 5-oxo-ETE G-protein coupled receptor, 5-oxo-ETE acid G-protein-coupled receptor 1, G-protein coupled receptor 170, G-protein coupled receptor R527, oxoeicosano

Official Symbol: OXER1

Accession Number(s): NP_683765.1

Human GeneID(s): [165140](#)

Immunogen

Peptide with sequence C-SRQWRYREASRK, from the C Terminus of the protein sequence according to NP_683765.1.

Please note the [peptide](#) is available for sale.

Purification and Storage

Purified from goat serum by ammonium sulphate precipitation followed by antigen affinity chromatography using the immunizing peptide.

Supplied at 0.5 mg/ml in Tris saline, 0.02% sodium azide, pH7.3 with 0.5% bovine serum albumin.

Aliquot and store at -20°C. Minimize freezing and thawing.

Applications Tested

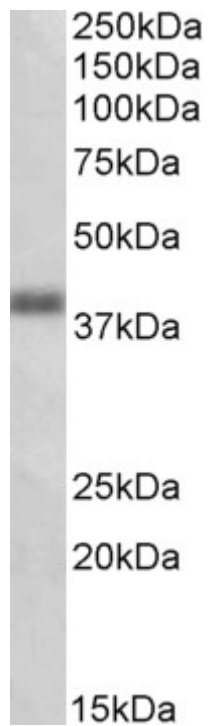
Peptide ELISA: antibody detection limit dilution 1:16000.

Western blot: Approx 38kDa band observed in Human Lung lysates (calculated MW of 45.8kDa according to NP_683765.1). This molecular weight is routinely observed by other sources. Recommended concentration: 1-3µg/ml.

Species Reactivity

Tested: Human

Expected from sequence similarity: Human



EB10894 (1 μ g/ml) staining of Human Lung lysate (35 μ g protein in RIPA buffer). Primary incubation was 1 hour. Detected by chemiluminescence.