



## International Office

### Everest Biotech Ltd

Vector Laboratories, Inc.  
6737 Mowry Ave  
Newark, CA 94560  
United States

Customer Service:

[customerservice@vectorlabs.com](mailto:customerservice@vectorlabs.com)

Technical Service:

[technical@vectorlabs.com](mailto:technical@vectorlabs.com)

Tel: +1 (800) 227-6666

[www.everestbiotech.com](http://www.everestbiotech.com)

**Research Use Only. Not for  
diagnostic or therapeutic use.**

## EB13096 - Goat Anti-Oxytocin Receptor Antibody

Size: 100µg specific antibody in 200µl



### Target Protein

**Principal Names:**

**Official Symbol:** OXTR

**Accession Number(s):** NP\_000907.2

**Human GeneID(s):** [5021](#)

### Immunogen

Peptide with sequence ANAPKEASAFIIVC, from the internal region of the protein sequence according to NP\_000907.2.

Please note the [peptide](#) is available for sale.

### Purification and Storage

Purified from goat serum by ammonium sulphate precipitation followed by antigen affinity chromatography using the immunizing peptide.

Supplied at 0.5 mg/ml in Tris saline, 0.02% sodium azide, pH7.3 with 0.5% bovine serum albumin.

Aliquot and store at -20°C. Minimize freezing and thawing.

### Applications Tested

**Peptide ELISA:** antibody detection limit dilution 1:16000.

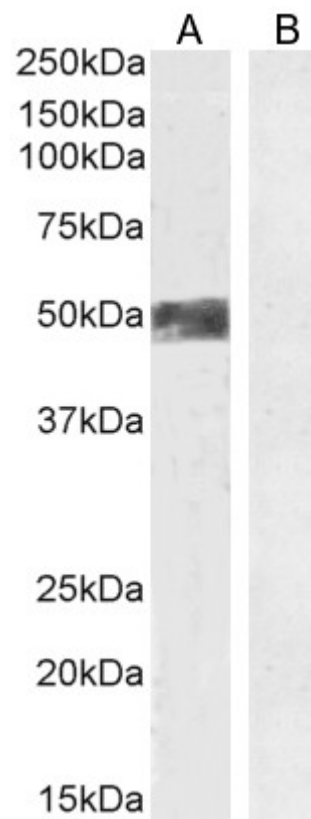
**Western blot:** Approx 50kDa band observed in Human Ovary lysate and in preliminary testing of Human Uterus lysate (calculated MW of 42.8kDa according to Human NP\_000907.2). This molecular weight is observed by other sources and was successfully blocked by incubation with the immunising peptide. Recommended concentration: 1-3µg/ml. Primary incubation 1 hour at room temperature.

**IHC:** Paraffin embedded Human Ovary. Recommended concentration: 4-6µg/ml. Some positive staining of stromal cells was also seen in paraffin embedded Human Prostate.

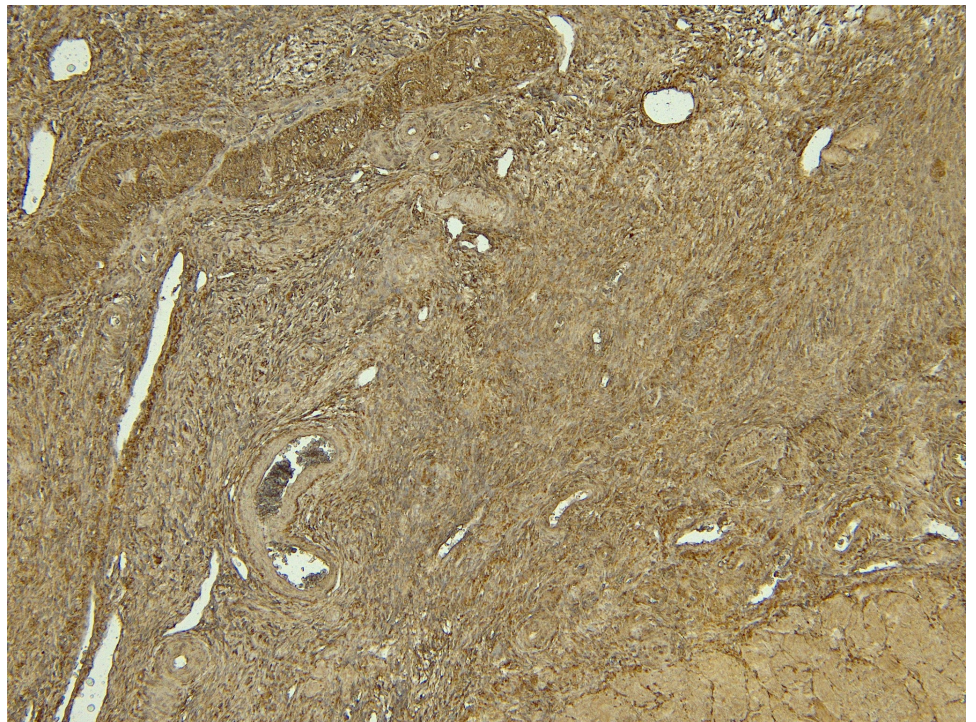
### Species Reactivity

**Tested:** Human

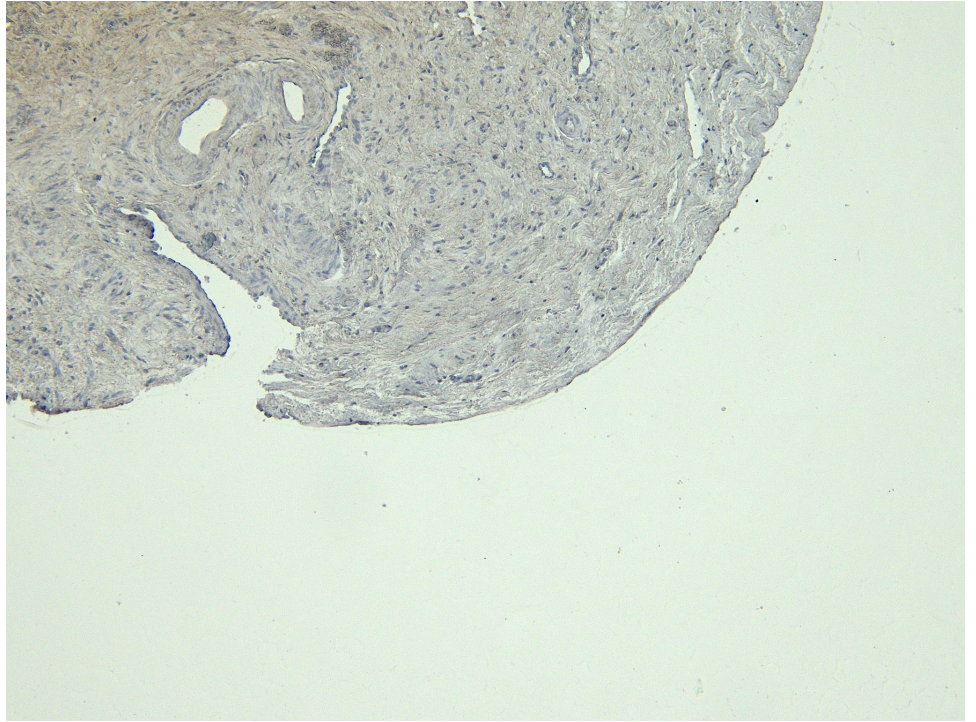
**Expected from sequence similarity:** Human



EB13096 (3 $\mu$ g/ml) staining of Human Ovary (A) + peptide (B) lysate (35 $\mu$ g protein in RIPA buffer). Detected by chemiluminescence.



EB13096 (6 $\mu$ g/ml) staining of paraffin embedded Human Ovary. Heat induced antigen retrieval with citrate buffer pH 6, HRP-staining.



EB13096 Negative Control showing staining of paraffin embedded Human Ovary, with no primary antibody.