



## UK Office

### Everest Biotech Ltd

Cherwell Innovation Centre  
77 Heyford Park  
Upper Heyford  
Oxfordshire  
OX25 5HD  
UK

Enquiries:

[info@everestbiotech.com](mailto:info@everestbiotech.com)

Sales:

[sales@everestbiotech.com](mailto:sales@everestbiotech.com)

Tech support:

[support@everestbiotech.com](mailto:support@everestbiotech.com)

Tel: +44 (0)1869 238326

Fax: +44 (0)1869 238327

## US Office

### Everest Biotech c/o Abcore

405 Maple Street, Suite A106  
Ramona,  
CA 92065  
USA

Inquiries:

[info@everestbiotech.com](mailto:info@everestbiotech.com)

Sales:

[usasales@everestbiotech.com](mailto:usasales@everestbiotech.com)

Tech support:

[support@everestbiotech.com](mailto:support@everestbiotech.com)

Tel: 888-320-4628 (toll-free)

Fax: 888-841-9041

[www.everestbiotech.com](http://www.everestbiotech.com)

**Research Use Only. Not for  
diagnostic or therapeutic use.**

## EB07183 - Goat Anti-Oxytocin Receptor Antibody

Size: 100µg specific antibody in 200µl



### Target Protein

**Principal Names:** OXTR, oxytocin receptor, OT-R, OTR

**Official Symbol:** OXTR

**Accession Number(s):** NP\_000907.2

**Human GeneID(s):** [5021](#)

**Non-Human GeneID(s):** 18430 (mouse), 25342 (rat)

### Immunogen

Peptide with sequence C-LRTTRQKHSRL, from the internal region of the protein sequence according to NP\_000907.2.

Please note the [peptide](#) is available for sale.

### Purification and Storage

Purified from goat serum by ammonium sulphate precipitation followed by antigen affinity chromatography using the immunizing peptide.

Supplied at 0.5 mg/ml in Tris saline, 0.02% sodium azide, pH7.3 with 0.5% bovine serum albumin.

Aliquot and store at -20°C. Minimize freezing and thawing.

### Applications Tested

**Peptide ELISA:** antibody detection limit dilution 1:64000.

**Western blot:** Preliminary experiments showed bands at 55kDa and 26kDa in Human Ovary and Breast lysates. Both bands were successfully blocked by incubation with the immunizing peptide at antibody concentration 2 µg/ml).

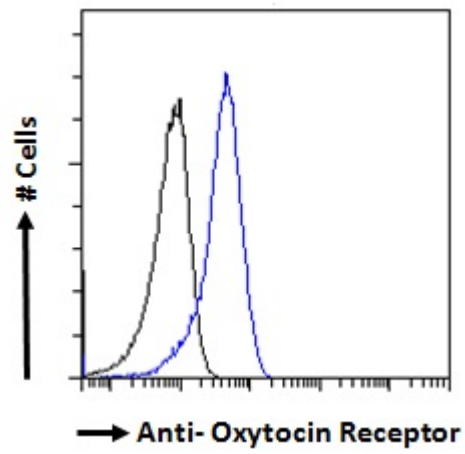
**IHC:** Paraffin embedded Human Ovary. Recommended concentration: 8µg/ml.

**Flow Cytometry:** Flow cytometric analysis of Jurkat cells. Recommended concentration: 10ug/ml.

### Species Reactivity

**Tested:** Human

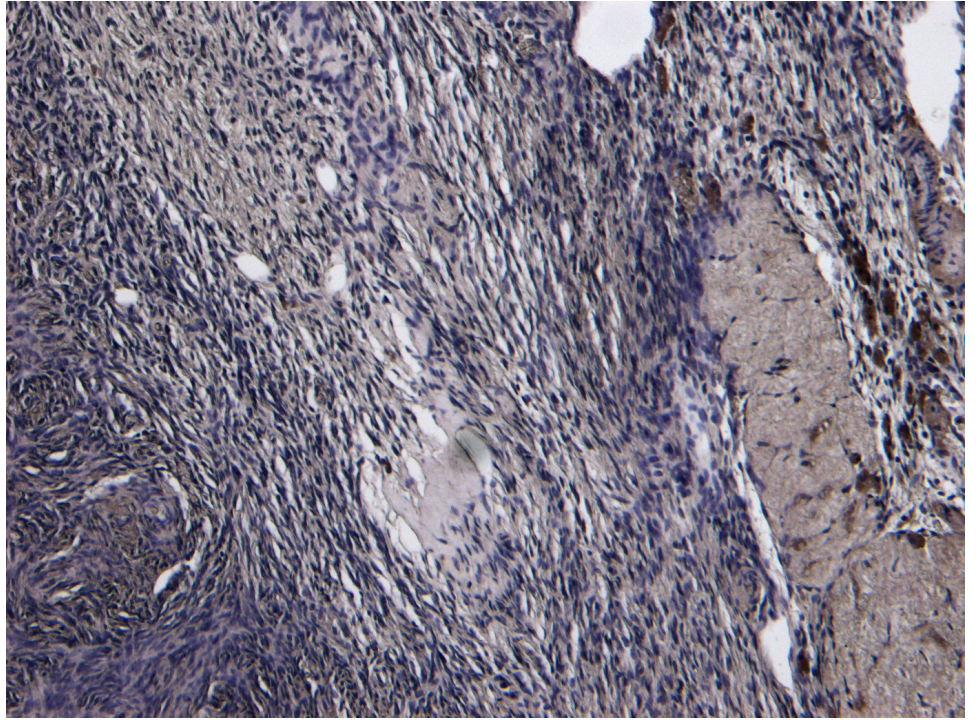
**Expected from sequence similarity:** Human



EB07183 Flow cytometric analysis of paraformaldehyde fixed Jurkat cells (blue line), permeabilized with 0.5% Triton. Primary incubation 1hr (10ug/ml) followed by Alexa Fluor 488 secondary antibody (1ug/ml). IgG control: Unimmunized goat IgG (black line) followed by Alexa Fluor 488 secondary antibody.



EB07183 (8µg/ml) staining of paraffin embedded Human Ovary. Heat induced antigen retrieval with citrate buffer pH 6, HRP-staining.



EB07183 Negative Control showing staining of paraffin embedded Human Ovary, with no primary antibody.