



## UK Office

### Everest Biotech Ltd

Cherwell Innovation Centre  
77 Heyford Park  
Upper Heyford  
Oxfordshire  
OX25 5HD  
UK

Enquiries:

[info@everestbiotech.com](mailto:info@everestbiotech.com)

Sales:

[sales@everestbiotech.com](mailto:sales@everestbiotech.com)

Tech support:

[support@everestbiotech.com](mailto:support@everestbiotech.com)

Tel: +44 (0)1869 238326

[www.everestbiotech.com](http://www.everestbiotech.com)

**Research Use Only. Not for  
diagnostic or therapeutic use.**

## EB11413 - Goat Anti-P2rx4 (mouse) Antibody

Size: 100µg specific antibody in 200µl



### Target Protein

**Principal Names:** AI504491, ATP receptor, AW555605, D5Ertd444e, ionotropic purinergic receptor, OTTMUSP00000023741, OTTMUSP00000023745, OTTMUSP00000023746, OTTMUSP00000023747, P2X purinoceptor 4, P2X4, purinergic receptor P2X, ligand-gated ion channel, 4, P2rx4

**Official Symbol:** P2rx4

**Accession Number(s):** NP\_035156.2

**Human GeneID(s):** [5025](#)

**Non-Human GeneID(s):** 18438 (mouse), 29659 (rat)

### Immunogen

Peptide with sequence C-ETDSVSSVTTKAK, from the internal region of the protein sequence according to NP\_035156.2.

Please note the [peptide](#) is available for sale.

### Purification and Storage

Purified from goat serum by ammonium sulphate precipitation followed by antigen affinity chromatography using the immunizing peptide.

Supplied at 0.5 mg/ml in Tris saline, 0.02% sodium azide, pH7.3 with 0.5% bovine serum albumin.

Aliquot and store at -20°C. Minimize freezing and thawing.

### Applications Tested

**Peptide ELISA:** antibody detection limit dilution 1:16000.

**Western blot:** Approx 48-50kDa band observed in lysates of cell line A549 (calculated MW of 43.4kDa according to Human NP\_002551.2). This molecular weight is routinely observed by other sources. Recommended concentration: 0.3-1µg/ml. Primary incubation 1 hour at room temperature. Preliminary testing was unsuccessful on Mouse and Rat Kidney and Liver for this particular batch.

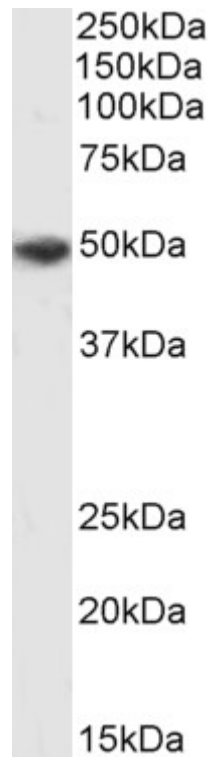
**IHC:** Paraffin embedded Human Uterus. Recommended concentration: 5µg/ml.

**Immunofluorescence:** Strong expression of the protein seen in the cytoplasm of A431 cells. Recommended concentration: 10µg/ml.

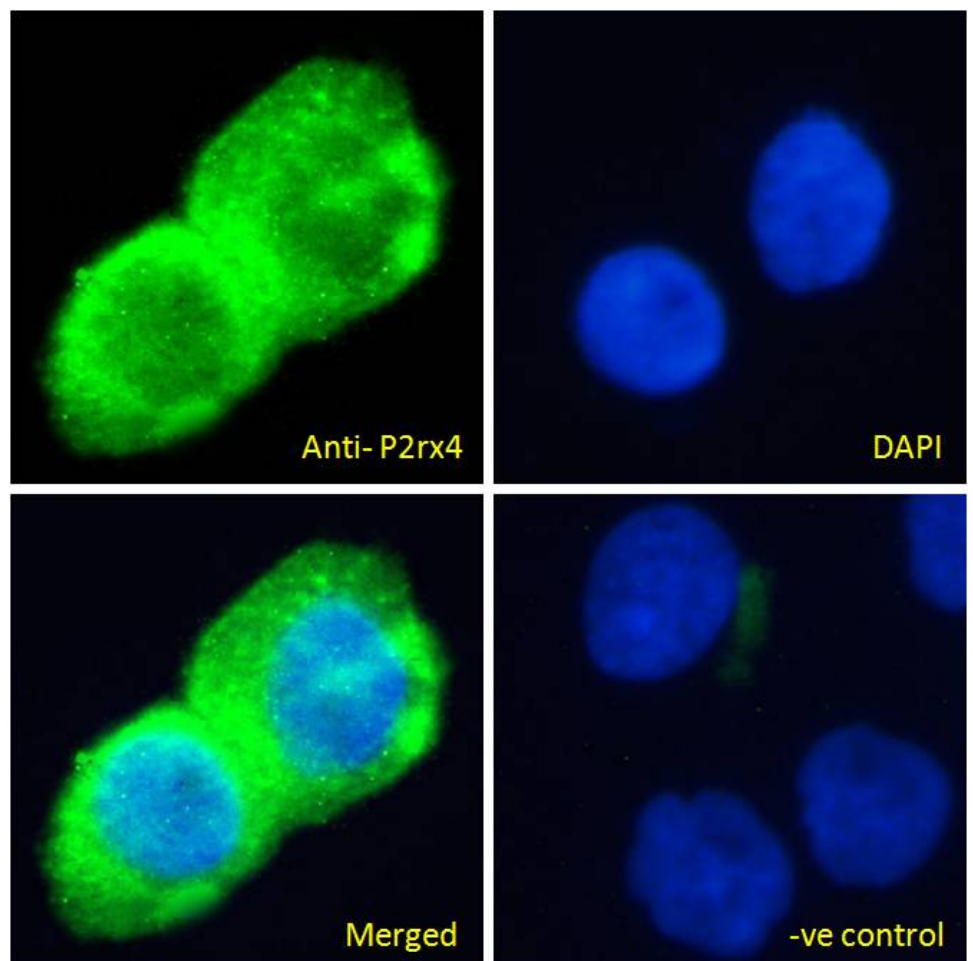
### Species Reactivity

**Tested:** Human

**Expected from sequence similarity:** Human, Mouse, Rat, Dog, Pig, Cow

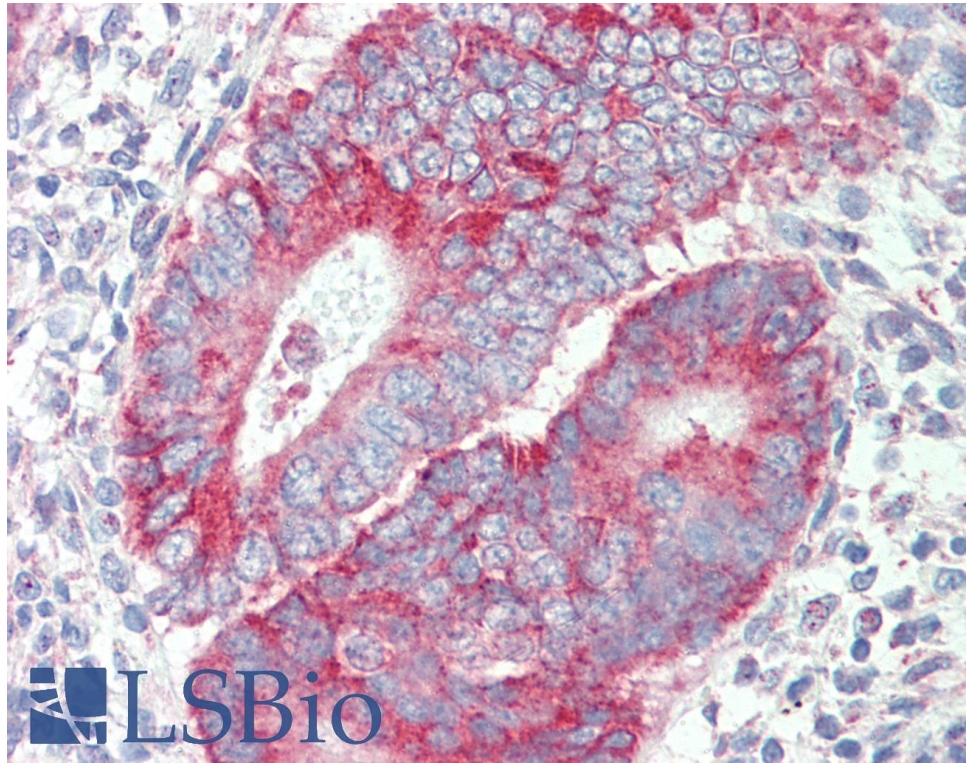


EB11413 (0.3 $\mu$ g/ml) staining of A549 cell lysate (35 $\mu$ g protein in RIPA buffer). Detected by chemiluminescence.



EB11413 Immunofluorescence analysis of paraformaldehyde fixed A431 cells, permeabilized with 0.15% Triton. Primary incubation 1hr (10 $\mu$ g/ml) followed by Alexa Fluor 488 secondary antibody (4 $\mu$ g/ml), showing cytoplasmic staining. The nuclear stain is DAPI (blue). Negative control: Unimmunized goat IgG (10 $\mu$ g/ml) followed by Alexa

Fluor 488 secondary antibody (4ug/ml).



EB11413 (5µg/ml) staining of paraffin embedded Human Uterus. Steamed antigen retrieval with citrate buffer pH 6, AP-staining.