

UK Office

Everest Biotech Ltd

Cherwell Innovation Centre
77 Heyford Park
Upper Heyford
Oxfordshire
OX25 5HD
UK

Enquiries:

info@everestbiotech.com

Sales:

sales@everestbiotech.com

Tech support:

support@everestbiotech.com

Tel: +44 (0)1869 238326

Fax: +44 (0)1869 238327

US Office

Everest Biotech c/o Abcore

405 Maple Street, Suite A106
Ramona,
CA 92065
USA

Inquiries:

info@everestbiotech.com

Sales:

usasales@everestbiotech.com

Tech support:

support@everestbiotech.com

Tel: 888-320-4628 (toll-free)

Fax: 888-841-9041

www.everestbiotech.com

**Research Use Only. Not for
diagnostic or therapeutic use.**

EB08830 - Goat Anti-P2X4 / P2X4R Antibody

Size: 100µg specific antibody in 200µl



Target Protein

Principal Names: P2X4, P2X4R, P2RX4, purinergic receptor P2X, ligand-gated ion channel, 4, ATP receptor, ATP-gated cation channel protein, P2X purinoceptor 4, P2X receptor, subunit 4, purinergic receptor P2X ligand-gated ion channel 4, purinergic receptor P2X4, purinoceptor P2X4

Official Symbol: P2RX4

Accession Number(s): NP_002551.2; NP_001243725.1; NP_001248326.1

Human GeneID(s): [5025](#)

Non-Human GeneID(s): 18438 (mouse), 29659 (rat)

Immunogen

Peptide with sequence C-YREKKYKYVEDYEQ, from the C Terminus of the protein sequence according to NP_002551.2; NP_001243725.1; NP_001248326.1.

Please note the [peptide](#) is available for sale.

Purification and Storage

Purified from goat serum by ammonium sulphate precipitation followed by antigen affinity chromatography using the immunizing peptide.

Supplied at 0.5 mg/ml in Tris saline, 0.02% sodium azide, pH7.3 with 0.5% bovine serum albumin.

Aliquot and store at -20°C. Minimize freezing and thawing.

Applications Tested

Peptide ELISA: antibody detection limit dilution 1:128000.

Western blot: Approx 60kDa band observed in Human Kidney lysates and in preliminary testing of Human Liver lysate (calculated MW of 43.4kDa according to NP_002551.2). This molecular weight is routinely observed by other sources and was successfully blocked by incubation with the immunizing peptide. Recommended concentration: 0.3-1ug/ml.

Primary incubation 1 hour at room temperature.

Flow Cytometry: Flow cytometric analysis of A431 cells. Recommended concentration: 10ug/ml.

Species Reactivity

Tested: Human

Expected from sequence similarity: Human, Mouse, Rat, Dog, Cow

Specific References

This antibody (previous batch) has been successfully used in the following paper:

Freeman KW, Bowman BR, Zetter BR.

Regenerative protein thymosin beta-4 is a novel regulator of purinergic signaling.

FASEB J. 2011 Mar;25(3):907-15.

PMID: 21106936

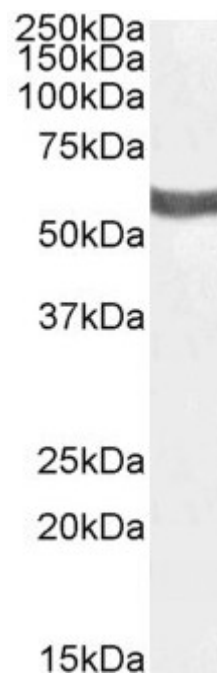
This antibody (previous batch) has been successfully used in the following paper:

Yuan H, Zhu X, Zhou S, Chen Q, Zhu X, Ma X, He X, Tian M, Shi X.

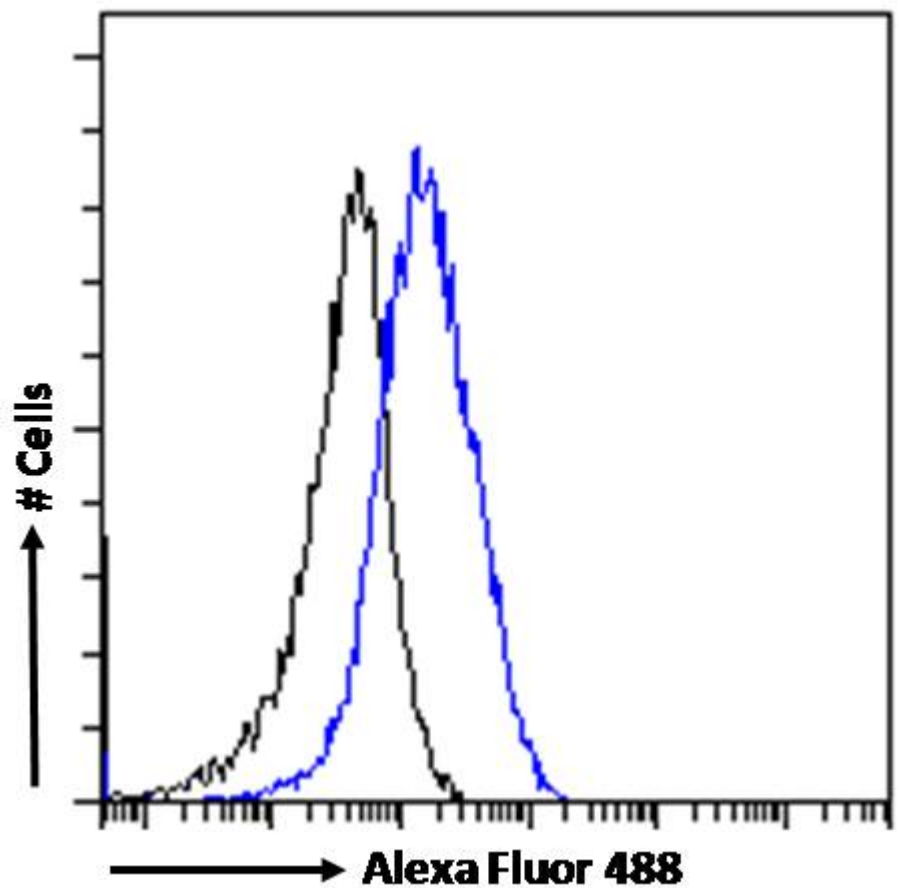
Role of mast cell activation in inducing microglial cells to release neurotrophin.

J Neurosci Res. 2010 May 1;88(6):1348-54.

PMID: 20025063



EB08830 (1µg/ml) staining of Human Kidney lysate (35µg protein in RIPA buffer). Detected by chemiluminescence.



EB08830 Flow cytometric analysis of paraformaldehyde fixed A431 cells (blue line), permeabilized with 0.5% Triton. Primary incubation 1hr (10ug/ml) followed by Alexa Fluor 488 secondary antibody (1ug/ml). IgG control: Unimmunized goat IgG (black line) followed by Alexa Fluor 488 secondary antibody.