



International Office

Everest Biotech Ltd

Vector Laboratories, Inc.
6737 Mowry Ave
Newark, CA 94560
United States

Customer Service:

customerservice@vectorlabs.com

Technical Service:

technical@vectorlabs.com

Tel: +1 (800) 227-6666

www.everestbiotech.com

**Research Use Only. Not for
diagnostic or therapeutic use.**

EB07666 - Goat Anti-P4HA1 Antibody

Size: 100µg specific antibody in 200µl



Target Protein

Principal Names: P4HA1, procollagen-proline, 2-oxoglutarate 4-dioxygenase (proline 4-hydroxylase), alpha polypeptide I, 4-PH alpha-1, P4HA, prolyl 4-hydroxylase, alpha I subunit

Official Symbol: P4HA1

Accession Number(s): NP_000908.2; NP_001017962.1

Human GeneID(s): [5033](#)

Non-Human GeneID(s): 18451 (mouse), 64475 (rat)

Important Comments: This antibody is expected to recognise both reported isoforms (NP_000908.2 and NP_001017962.1).

Immunogen

Peptide with sequence C-DFARKDEPDAFKE, from the internal region of the protein sequence according to NP_000908.2; NP_001017962.1.

Please note the [peptide](#) is available for sale.

Purification and Storage

Purified from goat serum by ammonium sulphate precipitation followed by antigen affinity chromatography using the immunizing peptide.

Supplied at 0.5 mg/ml in Tris saline, 0.02% sodium azide, pH7.3 with 0.5% bovine serum albumin.

Aliquot and store at -20°C. Minimize freezing and thawing.

Applications Tested

Peptide ELISA: antibody detection limit dilution 1:128000.

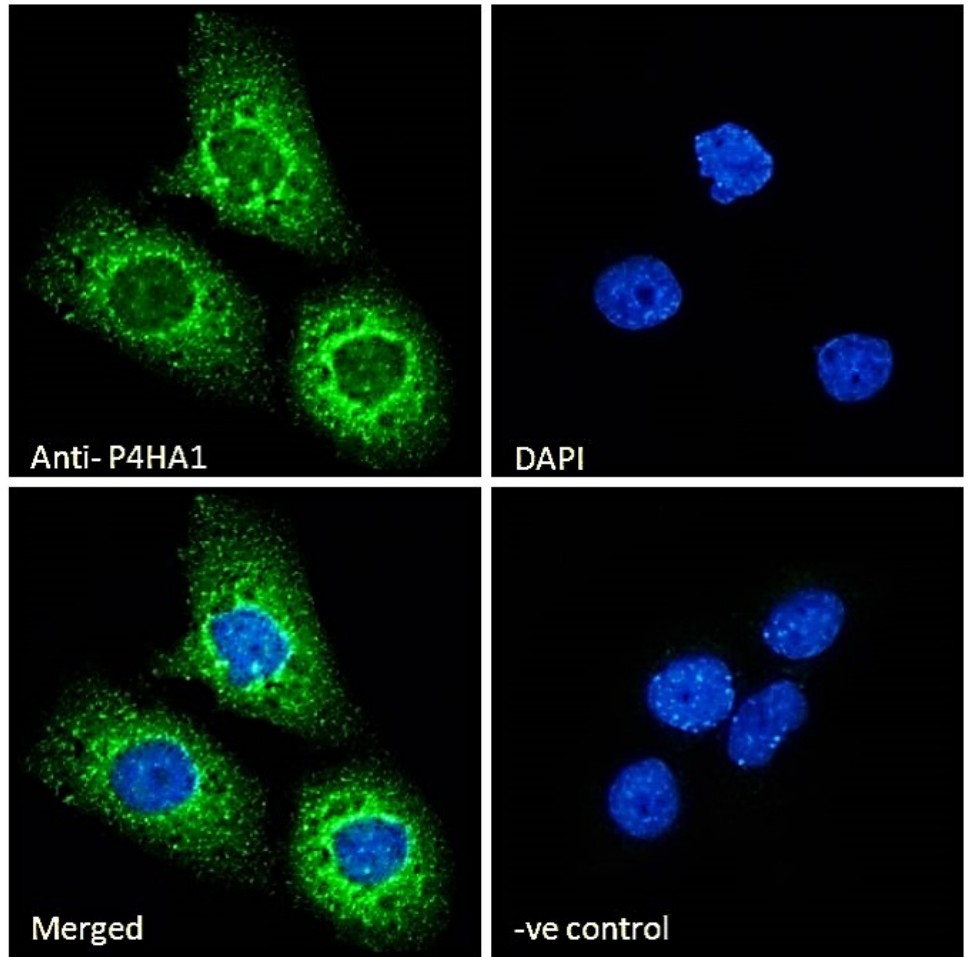
IHC: Paraffin embedded Human Spleen. Recommended concentration: 7µg/ml.

Immunofluorescence: Strong expression of the protein seen in the ER and cytoplasm of A431 cells. Recommended concentration: 10µg/ml.

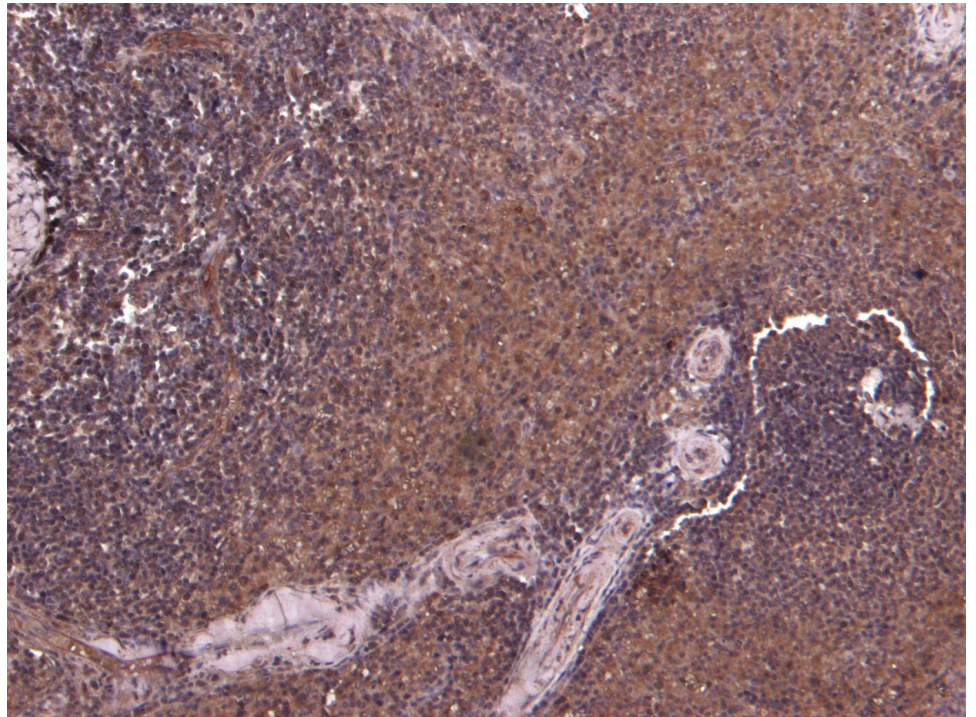
Species Reactivity

Tested: Human

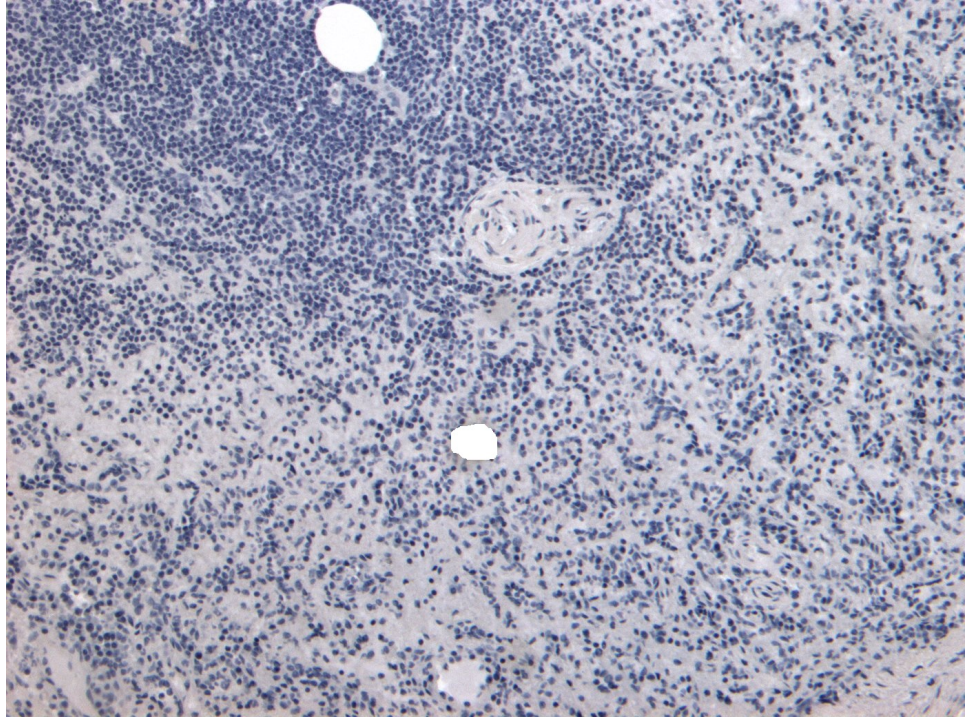
Expected from sequence similarity: Human, Dog, Cow



EB07666 Immunofluorescence analysis of paraformaldehyde fixed A431 cells, permeabilized with 0.15% Triton. Primary incubation 1hr (10ug/ml) followed by Alexa Fluor 488 secondary antibody (2ug/ml), showing endoplasmic reticulum and cytoplasmic staining. The nuclear stain is DAPI (blue). Negative control: Unimmunized goat IgG (10ug/ml) followed by Alexa Fluor 488 secondary antibody (2ug/ml).



EB07666 (7µg/ml) staining of paraffin embedded Human Spleen. Heat induced antigen retrieval with citrate buffer pH 6, HRP-staining.



EB07666 Negative Control showing staining of paraffin embedded Human Spleen, with no primary antibody.