

## UK Office

### Everest Biotech Ltd

Cherwell Innovation Centre  
77 Heyford Park  
Upper Heyford  
Oxfordshire  
OX25 5HD  
UK

Enquiries:

[info@everestbiotech.com](mailto:info@everestbiotech.com)

Sales:

[sales@everestbiotech.com](mailto:sales@everestbiotech.com)

Tech support:

[support@everestbiotech.com](mailto:support@everestbiotech.com)

Tel: +44 (0)1869 238326

[www.everestbiotech.com](http://www.everestbiotech.com)

**Research Use Only. Not for  
diagnostic or therapeutic use.**

## EB11125 - Goat Anti-p75NTR / CD271 (aa202-215) Antibody

Size: 100µg specific antibody in 200µl



### Target Protein

**Principal Names:** CD271, Gp80-LNGFR, low affinity nerve growth factor receptor, low affinity neurotrophin receptor p75NTR, low-affinity nerve growth factor receptor, nerve growth factor receptor, NGF receptor, OTTHUMP00000220319, p75 ICD, p75(NTR), p75NTR, TNFR superfamily, member 16, TNFRSF16, tumor necrosis factor receptor superfamily member 16, NGFR

**Official Symbol:** NGFR

**Accession Number(s):** NP\_002498.1

**Human GeneID(s):** [4804](#)

**Non-Human GeneID(s):** 18053 (mouse), 24596 (rat)

**Important Comments:** This antibody is expected to recognize the extracellular domain of p75NTR.

### Immunogen

Peptide with sequence C-PEGSDSTAPSTQEP, from the internal region of the protein sequence according to NP\_002498.1.

Please note the [peptide](#) is available for sale.

### Purification and Storage

Purified from goat serum by ammonium sulphate precipitation followed by antigen affinity chromatography using the immunizing peptide.

Supplied at 0.5 mg/ml in Tris saline, 0.02% sodium azide, pH7.3 with 0.5% bovine serum albumin.

Aliquot and store at -20°C. Minimize freezing and thawing.

### Applications Tested

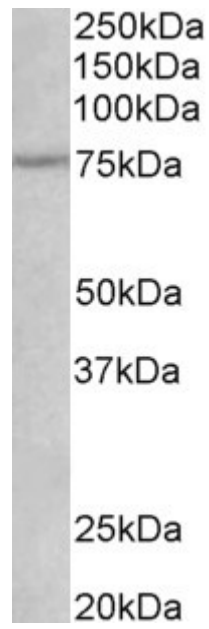
**Peptide ELISA:** antibody detection limit dilution 1:4000.

**Western blot:** Approx 75kDa band observed in Rat Heart lysates (calculated MW of 45.2kDa according to Human NP\_002498.1 and 45.4kDa according to Rat NP\_036742.2). The observed molecular weight corresponds to earlier findings in literature with different antibodies (Nykjaer et al, Curr Opin Neurobiol. 2005 Feb;15(1):49-57). Recommended concentration: 1-3µg/ml.

### Species Reactivity

**Tested:** Rat

**Expected from sequence similarity:** Human, Rat, Pig, Cow



EB11125 (1 $\mu$ g/ml) staining of Rat Heart lysate (35 $\mu$ g protein in RIPA buffer). Primary incubation was 1 hour.  
Detected by chemiluminescence.