



International Office

Everest Biotech Ltd

Vector Laboratories, Inc.
6737 Mowry Ave
Newark, CA 94560
United States

Customer Service:

customerservice@vectorlabs.com

Technical Service:

technical@vectorlabs.com

Tel: +1 (800) 227-6666

www.everestbiotech.com

**Research Use Only. Not for
diagnostic or therapeutic use.**

EB09447 - Goat Anti-PACAP Antibody

Size: 100µg specific antibody in 200µl



Target Protein

Principal Names: ADCYAP1, adenylate cyclase activating polypeptide 1 (pituitary), MGC126852, PACAP, OTTHUMP00000162201, adenylate cyclase activating polypeptide

Official Symbol: ADCYAP1

Accession Number(s): NP_001108.2

Human GeneID(s): [116](#)

Non-Human GeneID(s): 11516 (mouse), 24166 (rat)

Important Comments: Reported variants represent identical protein: NP_001093203.1, NP_001108.2.

Immunogen

Peptide with sequence C-GKRYKQRVKNKGRR, from the C Terminus of the protein sequence according to NP_001108.2.

Please note the [peptide](#) is available for sale.

Purification and Storage

Purified from goat serum by ammonium sulphate precipitation followed by antigen affinity chromatography using the immunizing peptide.

Supplied at 0.5 mg/ml in Tris saline, 0.02% sodium azide, pH7.3 with 0.5% bovine serum albumin.

Aliquot and store at -20°C. Minimize freezing and thawing.

Applications Tested

Peptide ELISA: antibody detection limit dilution 1:2000.

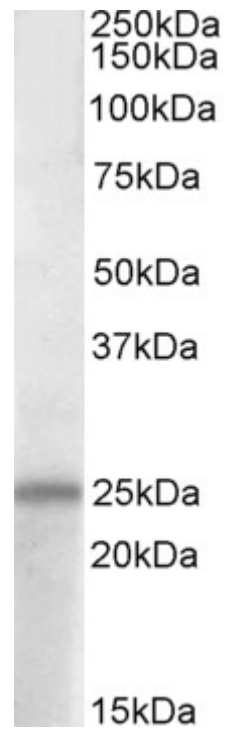
Western blot: Approx 25kDa band observed in Human Brain (Cerebral Cortex, Cerebellum and Hippocampus) lysates (calculated MW of 18.8kDa according to NP_001108.2). This molecular weight is routinely observed by other sources.

Recommended concentration: 1-3µg/ml.

Species Reactivity

Tested: Human

Expected from sequence similarity: Human, Mouse, Rat, Dog, Cow, Pig



EB09447 (1 μ g/ml) staining of Human Hippocampus lysate (35 μ g protein in RIPA buffer). Primary incubation was 1 hour. Detected by chemiluminescence.