



UK Office

Everest Biotech Ltd

Cherwell Innovation Centre
77 Heyford Park
Upper Heyford
Oxfordshire
OX25 5HD
UK

Enquiries:

info@everestbiotech.com

Sales:

sales@everestbiotech.com

Tech support:

support@everestbiotech.com

Tel: +44 (0)1869 238326

Fax: +44 (0)1869 238327

US Office

Everest Biotech c/o Abcore

405 Maple Street, Suite A106
Ramona,
CA 92065
USA

Inquiries:

info@everestbiotech.com

Sales:

usasales@everestbiotech.com

Tech support:

support@everestbiotech.com

Tel: 888-320-4628 (toll-free)

Fax: 888-841-9041

www.everestbiotech.com

**Research Use Only. Not for
diagnostic or therapeutic use.**

EB09447 - Goat Anti-PACAP Antibody

Size: 100µg specific antibody in 200µl



Target Protein

Principal Names: ADCYAP1, adenylate cyclase activating polypeptide 1 (pituitary), MGC126852, PACAP, OTTHUMP00000162201, adenylate cyclase activating polypeptide

Official Symbol: ADCYAP1

Accession Number(s): NP_001108.2

Human GeneID(s): [116](#)

Non-Human GeneID(s): 11516 (mouse), 24166 (rat)

Important Comments: Reported variants represent identical protein: NP_001093203.1, NP_001108.2.

Immunogen

Peptide with sequence C-GKRYKQRVKNKGRR, from the C Terminus of the protein sequence according to NP_001108.2.

Please note the [peptide](#) is available for sale.

Purification and Storage

Purified from goat serum by ammonium sulphate precipitation followed by antigen affinity chromatography using the immunizing peptide.

Supplied at 0.5 mg/ml in Tris saline, 0.02% sodium azide, pH7.3 with 0.5% bovine serum albumin.

Aliquot and store at -20°C. Minimize freezing and thawing.

Applications Tested

Peptide ELISA: antibody detection limit dilution 1:2000.

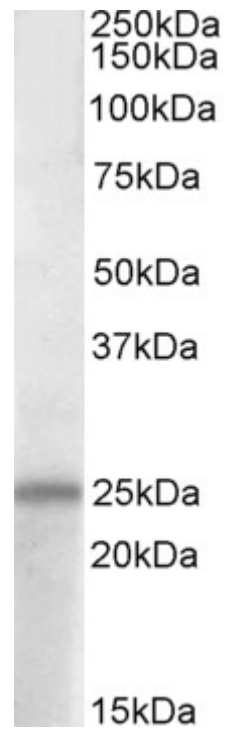
Western blot: Approx 25kDa band observed in Human Brain (Cerebral Cortex, Cerebellum and Hippocampus) lysates (calculated MW of 18.8kDa according to NP_001108.2). This molecular weight is routinely observed by other sources.

Recommended concentration: 1-3µg/ml.

Species Reactivity

Tested: Human

Expected from sequence similarity: Human, Mouse, Rat, Dog, Cow, Pig



EB09447 (1µg/ml) staining of Human Hippocampus lysate (35µg protein in RIPA buffer). Primary incubation was 1 hour. Detected by chemiluminescence.