



UK Office

Everest Biotech Ltd

Cherwell Innovation Centre
77 Heyford Park
Upper Heyford
Oxfordshire
OX25 5HD
UK

Enquiries:

info@everestbiotech.com

Sales:

sales@everestbiotech.com

Tech support:

support@everestbiotech.com

Tel: +44 (0)1869 238326

Fax: +44 (0)1869 238327

US Office

Everest Biotech c/o Abcore

405 Maple Street, Suite A106
Ramona,
CA 92065
USA

Inquiries:

info@everestbiotech.com

Sales:

usasales@everestbiotech.com

Tech support:

support@everestbiotech.com

Tel: 888-320-4628 (toll-free)

Fax: 888-841-9041

www.everestbiotech.com

**Research Use Only. Not for
diagnostic or therapeutic use.**

EB05271 - Goat Anti-PACSIN3 Antibody

Size: 100µg specific antibody in 200µl



Target Protein

Principal Names: PACSIN3, protein kinase C and casein kinase substrate in neurons 3, SH3 domain-containing protein 6511, SDP11, syndapin III, SH3 domain-containing protein 6511

Official Symbol: PACSIN3

Accession Number(s): NP_057307.2

Human GeneID(s): [29763](#)

Non-Human GeneID(s): 80708 (mouse), 311187 (rat)

Immunogen

Peptide with sequence APEEDAGGEALGGS-C, from the N Terminus of the protein sequence according to NP_057307.2.

Please note the [peptide](#) is available for sale.

Purification and Storage

Purified from goat serum by ammonium sulphate precipitation followed by antigen affinity chromatography using the immunizing peptide.

Supplied at 0.5 mg/ml in Tris saline, 0.02% sodium azide, pH7.3 with 0.5% bovine serum albumin.

Aliquot and store at -20°C. Minimize freezing and thawing.

Applications Tested

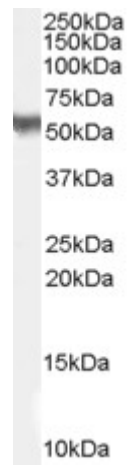
Peptide ELISA: antibody detection limit dilution 1:4000.

Western blot: EB05271 (0.03µg/ml) staining of Human Skeletal Muscle lysate (35µg protein in RIPA buffer). Primary incubation was 1 hour. Detected by chemiluminescence.

Species Reactivity

Tested: Human

Expected from sequence similarity: Human, Mouse, Rat



EB05271 staining (1 μ g/ml) of H460 lysate (RIPA buffer, 35 μ g total protein per lane). Primary incubated for 1 hour. Detected by western blot using chemiluminescence.