

UK Office

Everest Biotech Ltd

Cherwell Innovation Centre
77 Heyford Park
Upper Heyford
Oxfordshire
OX25 5HD
UK

Enquiries:

info@everestbiotech.com

Sales:

sales@everestbiotech.com

Tech support:

support@everestbiotech.com

Tel: +44 (0)1869 238326

Fax: +44 (0)1869 238327

US Office

Everest Biotech c/o Abcore

405 Maple Street, Suite A106
Ramona,
CA 92065
USA

Inquiries:

info@everestbiotech.com

Sales:

usasales@everestbiotech.com

Tech support:

support@everestbiotech.com

Tel: 888-320-4628 (toll-free)

Fax: 888-841-9041

www.everestbiotech.com

**Research Use Only. Not for
diagnostic or therapeutic use.**

EB06720-T - Goat Anti-PAI1 / SERPINE1 Antibody - Trial

Size: 20µg specific antibody in 40µl



Target Protein

Principal Names: SERPINE1, PAI1, PAI, PAI-1, PLANH1, serine (or cysteine) proteinase inhibitor, clade E (nexin, plasminogen activator inhibitor type 1), member 1, plasminogen activator inhibitor, type I, serpin peptidase inhibitor, clade E (nexin, plasminogen activator inhibitor type 1), member 1, plasminogen activator inhibitor-1, endothelial plasminogen activator inhibitor, plasminogen activator inhibitor, type I, plasminogen activator inhibitor-1, serpin E1, SERPINE1

Official Symbol: SERPINE1

Accession Number(s): NP_000593.1

Human GeneID(s): [5054](#)

Immunogen

Peptide with sequence C-GFKIDDKGMALRH, from the internal region of the protein sequence according to NP_000593.1.

Please note the [peptide](#) is available for sale.

Purification and Storage

Purified from goat serum by ammonium sulphate precipitation followed by antigen affinity chromatography using the immunizing peptide.

Supplied at 0.5 mg/ml in Tris saline, 0.02% sodium azide, pH7.3 with 0.5% bovine serum albumin.

Aliquot and store at -20°C. Minimize freezing and thawing.

Applications Tested

Peptide ELISA: antibody detection limit dilution 1:64000.

Western blot: Approx 48kDa band observed in Human Liver and HeLa lysates, while approx. 45kDa observed in lysates of cell lines A549 and HepG2 (calculated MW of 45.1kDa according to NP_000593.1). This molecular weight is routinely observed by other sources. Recommended concentration: 0.1-0.3µg/ml. Primary incubation was 1 hour.

IHC: In paraffin embedded Human Placenta shows strong staining of cytotrophoblasts. Recommended concentration: 4-6µg/ml. A customer successfully used this product on Human Breast cancer.

Species Reactivity

Tested: Human

Expected from sequence similarity: Human, Dog

Specific Reference

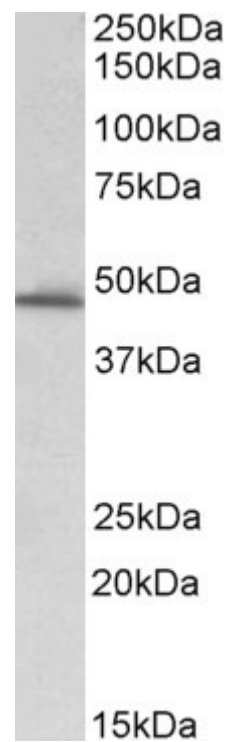
This antibody has been successfully used in the following paper:

Kozaczuk A, Selmi A, Bednarek R.

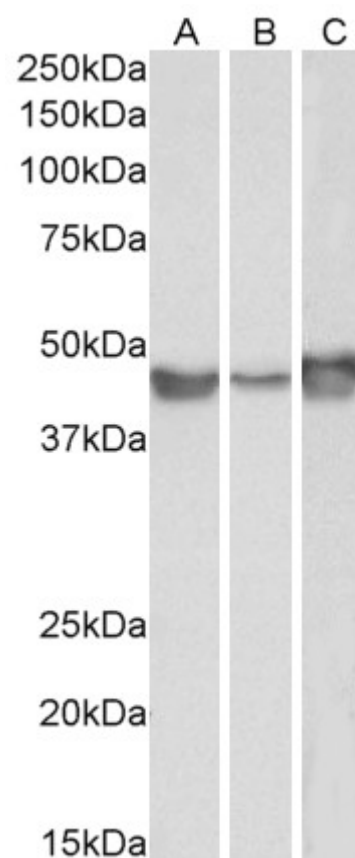
Bacterial expression, purification and angiogenesis-promoting activity of human thymosin β 4.

Protein Expr Purif. 2013 Aug;90(2):142-52.

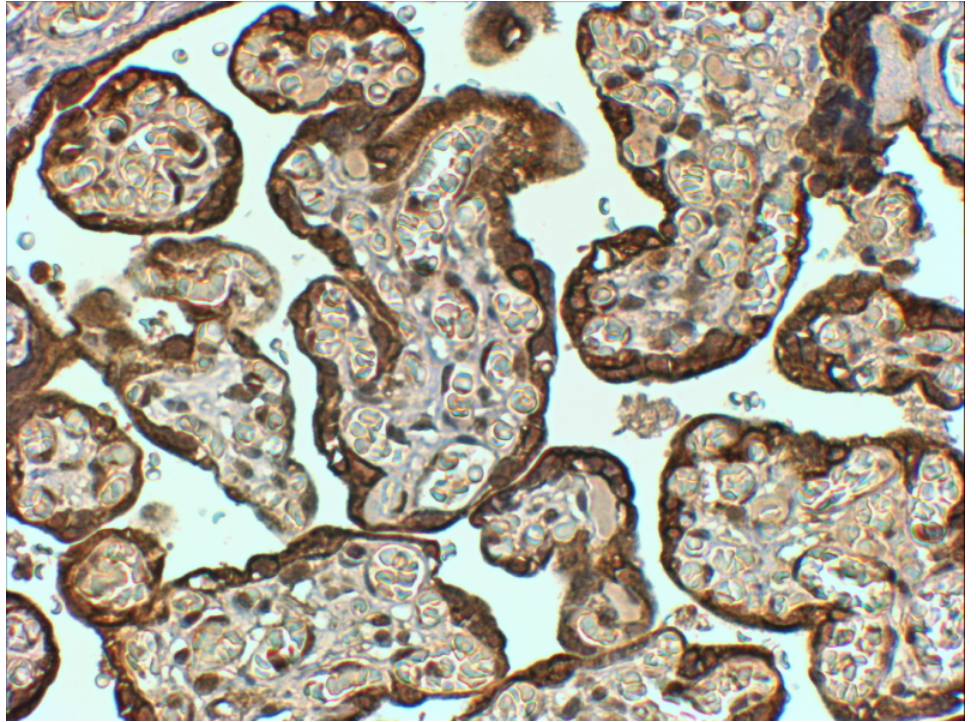
PMID: 23769831



EB06720 (0.3 μ g/ml) staining of Human Liver lysate (35 μ g protein in RIPA buffer). Detected by chemiluminescence.



EB06720 (0.1 μ g/ml) staining of A549 (A), HepG2 (B) and HeLa (C) lysates (35 μ g protein in RIPA buffer). Detected by chemiluminescence.



EB06720 (4µg/ml) staining of paraffin embedded Human Placenta. Steamed antigen retrieval with Tris/EDTA buffer pH 9, HRP-staining.