



International Office

Everest Biotech Ltd

Vector Laboratories, Inc.
6737 Mowry Ave
Newark, CA 94560
United States

Customer Service:

customerservice@vectorlabs.com

Technical Service:

technical@vectorlabs.com

Tel: +1 (800) 227-6666

www.everestbiotech.com

**Research Use Only. Not for
diagnostic or therapeutic use.**

EB05946 - Goat Anti-Pallidin Antibody

Size: 100µg specific antibody in 200µl



Target Protein

Principal Names: pallidin homolog (mouse), pallidin, PLDN, PA, PALLID, pallid (mouse) homolog, pallidin, syntaxin 13 binding protein 1, syntaxin 13-interacting protein pallid

Official Symbol: BLOC1S6

Accession Number(s): NP_036520.1

Human GeneID(s): [26258](#)

Immunogen

Peptide with sequence C-EREKQLTARPAKRM, from the C Terminus of the protein sequence according to NP_036520.1.

Please note the [peptide](#) is available for sale.

Purification and Storage

Purified from goat serum by ammonium sulphate precipitation followed by antigen affinity chromatography using the immunizing peptide.

Supplied at 0.5 mg/ml in Tris saline, 0.02% sodium azide, pH7.3 with 0.5% bovine serum albumin.

Aliquot and store at -20°C. Minimize freezing and thawing.

Applications Tested

Peptide ELISA: antibody detection limit dilution 1:32000.

Western blot: Approx 23-24kDa band observed in lysates of cell line A431 (calculated MW of 19.7kDa according to NP_036520.1). In transfected HEK293 transiently expressing PLDN a band of approx. 28kDa is observed. This band is not observed in the non-transfected HEK293. Recommended concentration: 1-3µg/ml.

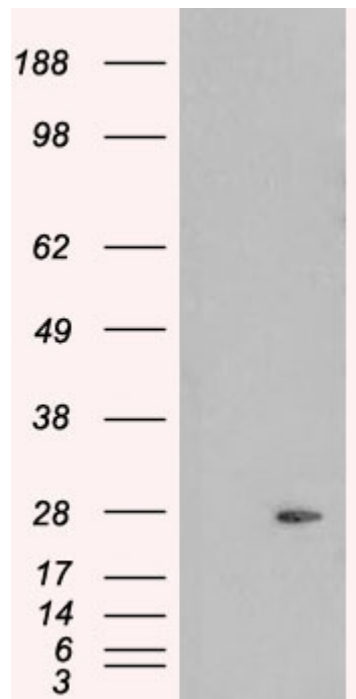
Species Reactivity

Tested: Human

Expected from sequence similarity: Human, Mouse, Rat, Pig, Cow



EB05946 staining (1 μ g/ml) of A431 lysate (RIPA buffer, 35 μ g total protein per lane). Primary incubated for 1 hour. Detected by western blot using chemiluminescence.



HEK293 overexpressing PLDN (RC201514) and probed with EB05946 (mock transfection in first lane), tested by Origene.