



## International Office

### Everest Biotech Ltd

Vector Laboratories, Inc.  
6737 Mowry Ave  
Newark, CA 94560  
United States

Customer Service:

[customerservice@vectorlabs.com](mailto:customerservice@vectorlabs.com)

Technical Service:

[technical@vectorlabs.com](mailto:technical@vectorlabs.com)

Tel: +1 (800) 227-6666

[www.everestbiotech.com](http://www.everestbiotech.com)

**Research Use Only. Not for  
diagnostic or therapeutic use.**

## EB06223 - Goat Anti-PALS / MPP5 Antibody

Size: 100µg specific antibody in 200µl



### Target Protein

**Principal Names:** MPP5, PALS1, FLJ12615, membrane protein, palmitoylated 5 (MAGUK p55 subfamily member 5), stardust (Drosophila), MAGUK p55 subfamily member 5, membrane protein, palmitoylated 5, stardust

**Official Symbol:** PALS1

**Accession Number(s):** NP\_071919.2; NP\_001243479.1

**Human GeneID(s):** [64398](#)

### Immunogen

Peptide with sequence NKASPPFPLISNAQ-C, from the N Terminus of the protein sequence according to NP\_071919.2; NP\_001243479.1.

Please note the [peptide](#) is available for sale.

### Purification and Storage

Purified from goat serum by ammonium sulphate precipitation followed by antigen affinity chromatography using the immunizing peptide.

Supplied at 0.5 mg/ml in Tris saline, 0.02% sodium azide, pH7.3 with 0.5% bovine serum albumin.

Aliquot and store at -20°C. Minimize freezing and thawing.

### Applications Tested

**Peptide ELISA:** antibody detection limit dilution 1:32000.

**Western blot:** Preliminary testing showed a band at approx 75kDa in Human Cerebellum lysate after 1µg/ml antibody staining (calculated MW of 73.4kDa according to NP\_001243479.1). Primary incubation 1 hour at room temperature.

**IHC:** Paraffin embedded Human Small Intestine and Kidney. Recommended concentration: 5µg/ml.

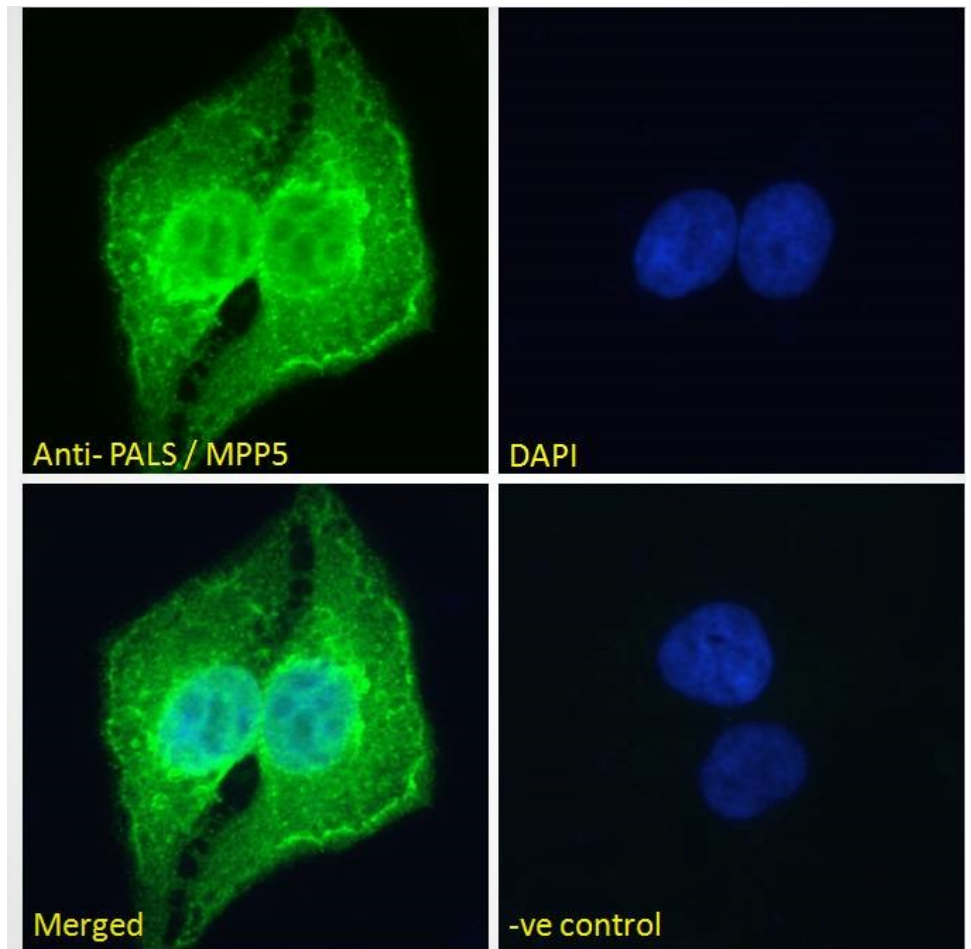
**Immunofluorescence:** Strong expression of the protein seen in U2OS and HeLa cells. Recommended concentration: 10µg/ml.

**Flow Cytometry:** Flow cytometric analysis of HeLa cells. Recommended concentration: 10ug/ml.

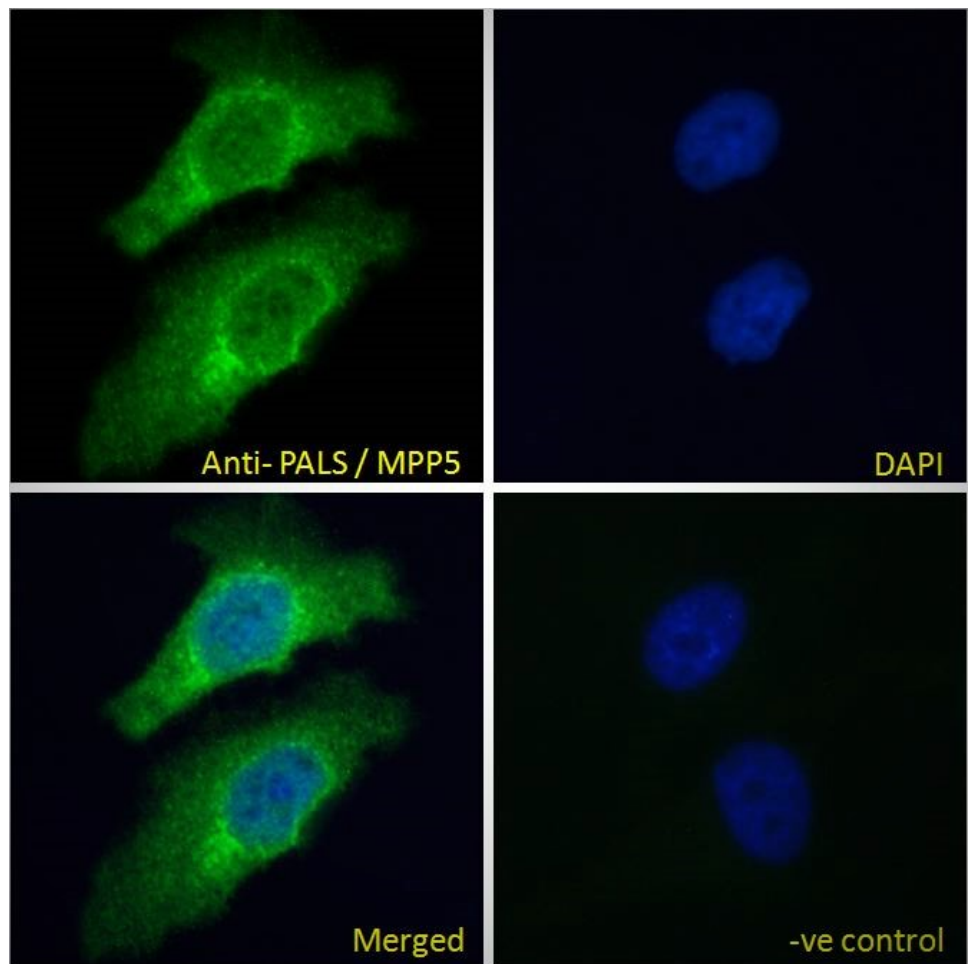
### Species Reactivity

**Tested:** Human

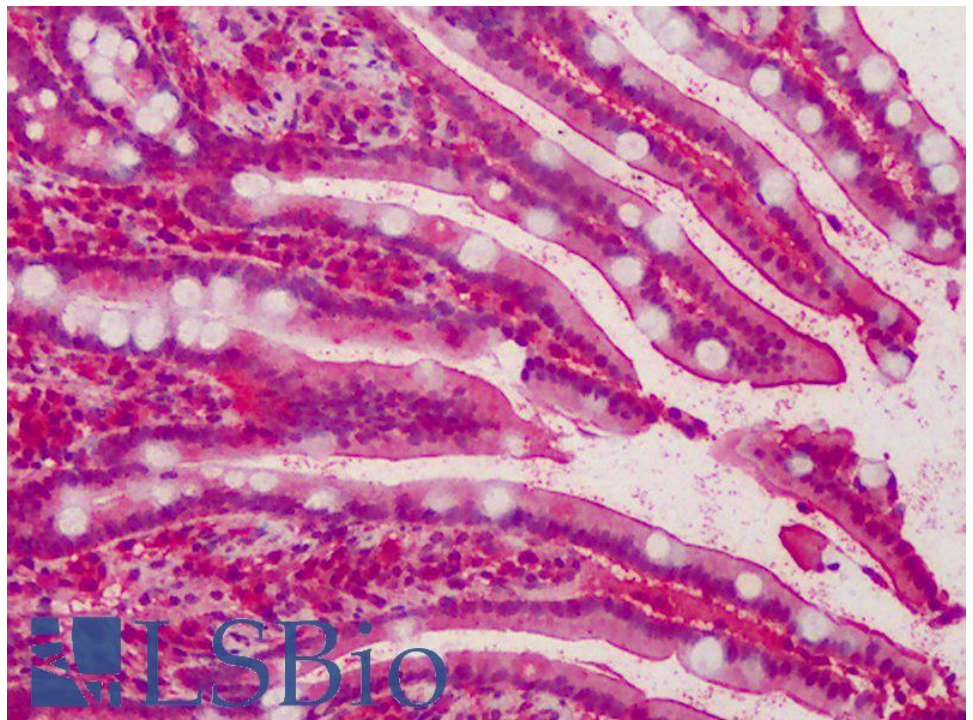
**Expected from sequence similarity:** Human, Cow, Dog, Pig



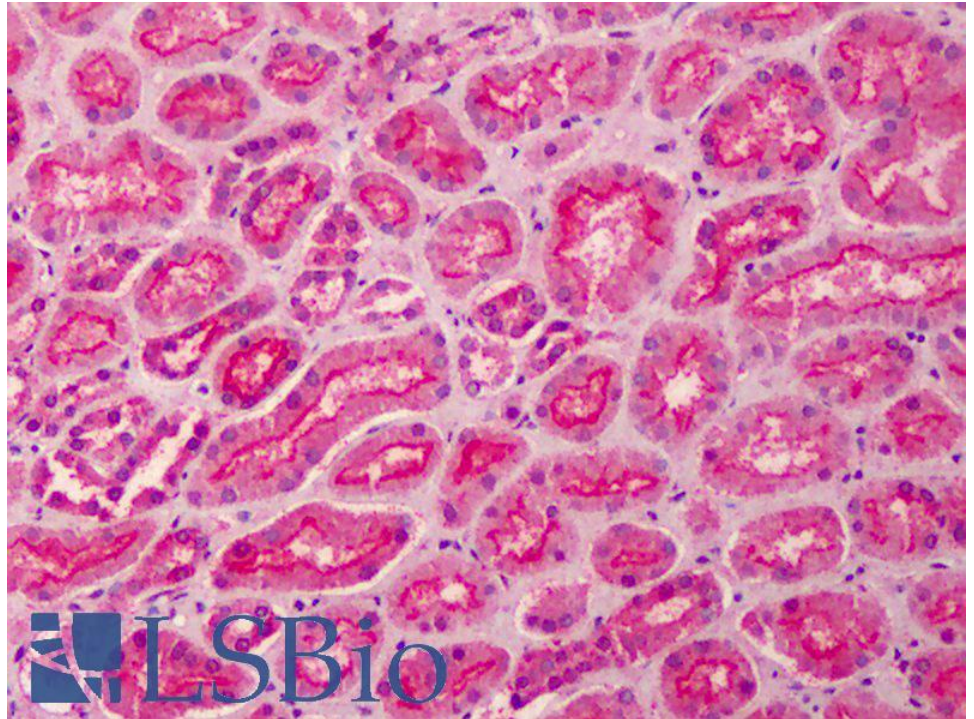
EB06223 Immunofluorescence analysis of paraformaldehyde fixed U2OS cells, permeabilized with 0.15% Triton. Primary incubation 1hr (10ug/ml) followed by Alexa Fluor 488 secondary antibody (2ug/ml), showing nuclear, plasma membrane and cytoplasmic staining. The nuclear stain is DAPI (blue). Negative control: Unimmunized goat IgG (10ug/ml) followed by Alexa Fluor 488 secondary antibody (2ug/ml).



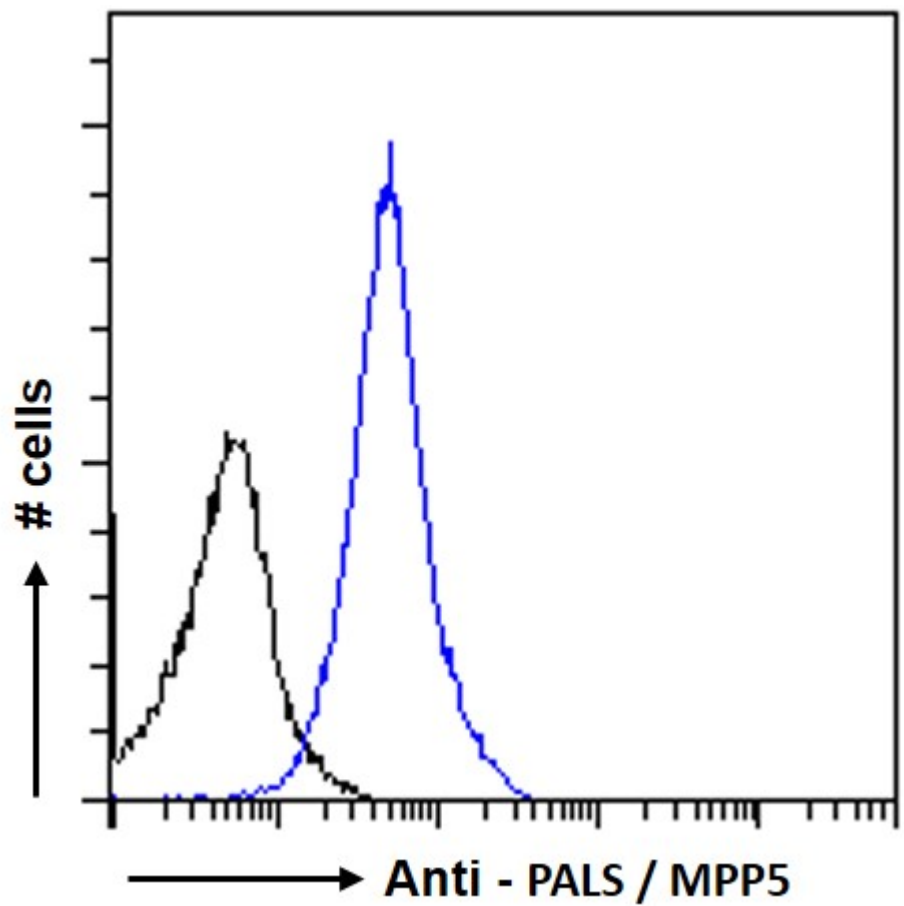
EB06223 Immunofluorescence analysis of paraformaldehyde fixed HeLa cells, permeabilized with 0.15% Triton. Primary incubation 1hr (10ug/ml) followed by Alexa Fluor 488 secondary antibody (2ug/ml), showing Golgi and cytoplasmic staining. The nuclear stain is DAPI (blue). Negative control: Unimmunized goat IgG (10ug/ml) followed by Alexa Fluor 488 secondary antibody (2ug/ml).



EB06223 (5µg/ml) staining of paraffin embedded Human Small Intestine. Steamed antigen retrieval with citrate buffer pH 6, AP-staining.



B06223 (5µg/ml) staining of paraffin embedded Human Kidney. Steamed antigen retrieval with citrate buffer pH 6, AP-staining.



EB06223 Flow cytometric analysis of paraformaldehyde fixed HeLa cells (blue line), permeabilized with 0.5% Triton. Primary incubation 1hr (10ug/ml) followed by Alexa Fluor 488 secondary antibody (1ug/ml). IgG control: Unimmunized goat IgG (black line) followed by Alexa Fluor 488 secondary antibody.