



## UK Office

### Everest Biotech Ltd

Cherwell Innovation Centre  
77 Heyford Park  
Upper Heyford  
Oxfordshire  
OX25 5HD  
UK

Enquiries:

[info@everestbiotech.com](mailto:info@everestbiotech.com)

Sales:

[sales@everestbiotech.com](mailto:sales@everestbiotech.com)

Tech support:

[support@everestbiotech.com](mailto:support@everestbiotech.com)

Tel: +44 (0)1869 238326

[www.everestbiotech.com](http://www.everestbiotech.com)

**Research Use Only. Not for  
diagnostic or therapeutic use.**

## EB06226 - Goat Anti-PALS2 / VAM1 / MPP6 Antibody

Size: 100µg specific antibody in 200µl



### Target Protein

**Principal Names:** MPP6, VAM1, p55T, VAM-1, membrane protein, palmitoylated 6 (MAGUK p55 subfamily member 6), MAGUK protein p55T, VELI-associated MAGUK 1, protein associated with Lin7 2, PALS2

**Official Symbol:** MPP6

**Accession Number(s):** NP\_057531.2

**Human GeneID(s):** [51678](#)

**Non-Human GeneID(s):** 56524 (mouse)

### Immunogen

Peptide with sequence QQVLENLTELPSS-C, from the N Terminus of the protein sequence according to NP\_057531.2.

Please note the [peptide](#) is available for sale.

### Purification and Storage

Purified from goat serum by ammonium sulphate precipitation followed by antigen affinity chromatography using the immunizing peptide.

Supplied at 0.5 mg/ml in Tris saline, 0.02% sodium azide, pH7.3 with 0.5% bovine serum albumin.

Aliquot and store at -20°C. Minimize freezing and thawing.

### Applications Tested

**Peptide ELISA:** antibody detection limit dilution 1:128000.

**Western blot:** Approx 60kDa band observed in lysates of cell line HEK293 (calculated MW of 61.1kDa according to NP\_057531.2). Recommended concentration: 0.3-1µg/ml. Primary incubated was for 1 hour. An additional band of unknown identity was also consistently observed at 28kDa. This band was successfully blocked by incubation with the immunising peptide.

**IHC:** Paraffin embedded Human Liver. Recommended concentration: 5µg/ml.

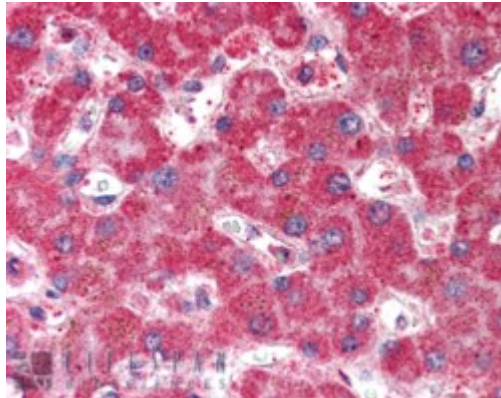
### Species Reactivity

**Tested:** Human

**Expected from sequence similarity:** Human, Mouse, Rat, Dog, Pig, Cow



EB06226 staining (0.3 $\mu$ g/ml) of 293 lysate (RIPA buffer, 35 $\mu$ g total protein per lane). Detected by western blot using chemiluminescence.



EB06226 (5 $\mu$ g/ml) staining of paraffin embedded Human Liver. Steamed antigen retrieval with citrate buffer pH 6, AP-staining.