



UK Office

Everest Biotech Ltd

Cherwell Innovation Centre
77 Heyford Park
Upper Heyford
Oxfordshire
OX25 5HD
UK

Enquiries:

info@everestbiotech.com

Sales:

sales@everestbiotech.com

Tech support:

support@everestbiotech.com

Tel: +44 (0)1869 238326

Fax: +44 (0)1869 238327

US Office

Everest Biotech c/o Abcore

405 Maple Street, Suite A106
Ramona,
CA 92065
USA

Inquiries:

info@everestbiotech.com

Sales:

usasales@everestbiotech.com

Tech support:

support@everestbiotech.com

Tel: 888-320-4628 (toll-free)

Fax: 888-841-9041

www.everestbiotech.com

**Research Use Only. Not for
diagnostic or therapeutic use.**

EB06226 - Goat Anti-PALS2 / VAM1 / MPP6 Antibody

Size: 100µg specific antibody in 200µl



Target Protein

Principal Names: MPP6, VAM1, p55T, VAM-1, membrane protein, palmitoylated 6 (MAGUK p55 subfamily member 6), MAGUK protein p55T, VELI-associated MAGUK 1, protein associated with Lin7 2, PALS2

Official Symbol: MPP6

Accession Number(s): NP_057531.2

Human GeneID(s): [51678](#)

Non-Human GeneID(s): 56524 (mouse)

Immunogen

Peptide with sequence QQVLENLTELPSS-C, from the N Terminus of the protein sequence according to NP_057531.2.

Please note the [peptide](#) is available for sale.

Purification and Storage

Purified from goat serum by ammonium sulphate precipitation followed by antigen affinity chromatography using the immunizing peptide.

Supplied at 0.5 mg/ml in Tris saline, 0.02% sodium azide, pH7.3 with 0.5% bovine serum albumin.

Aliquot and store at -20°C. Minimize freezing and thawing.

Applications Tested

Peptide ELISA: antibody detection limit dilution 1:128000.

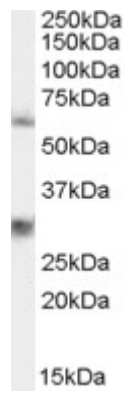
Western blot: Approx 60kDa band observed in lysates of cell line HEK293 (calculated MW of 61.1kDa according to NP_057531.2). Recommended concentration: 0.3-1µg/ml. Primary incubated was for 1 hour. An additional band of unknown identity was also consistently observed at 28kDa. This band was successfully blocked by incubation with the immunising peptide.

IHC: Paraffin embedded Human Liver. Recommended concentration: 5µg/ml.

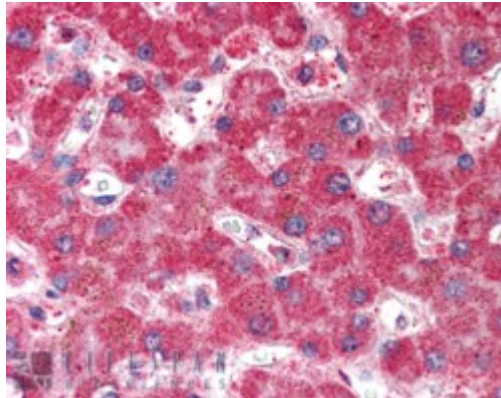
Species Reactivity

Tested: Human

Expected from sequence similarity: Human, Mouse, Rat, Dog, Pig, Cow



EB06226 staining (0.3 μ g/ml) of 293 lysate (RIPA buffer, 35 μ g total protein per lane). Detected by western blot using chemiluminescence.



EB06226 (5 μ g/ml) staining of paraffin embedded Human Liver. Steamed antigen retrieval with citrate buffer pH 6, AP-staining.