



UK Office

Everest Biotech Ltd

Cherwell Innovation Centre
77 Heyford Park
Upper Heyford
Oxfordshire
OX25 5HD
UK

Enquiries:

info@everestbiotech.com

Sales:

sales@everestbiotech.com

Tech support:

support@everestbiotech.com

Tel: +44 (0)1869 238326

www.everestbiotech.com

**Research Use Only. Not for
diagnostic or therapeutic use.**

EB08374 - Goat Anti-PAM / PAL Antibody

Size: 100µg specific antibody in 200µl



Target Protein

Principal Names: PAM, PAL, peptidylglycine alpha-amidating monooxygenase, PHM, pancreatic peptidylglycine alpha-amidating monooxygenase, peptidyl alpha-amidating enzyme, peptidyl-alpha-hydroxyglycine alpha-amidating lyase, peptidylglycine 2-hydroxylase, peptidylglycine alpha-hydroxylating monooxygenase

Official Symbol: PAM

Accession Number(s): NP_000910.2; NP_620121.1; NP_620176.1; NP_620177.1

Human GeneID(s): [5066](#)

Important Comments: This antibody is expected to recognise all reported isoforms (NP_000910.2; NP_620121.1; NP_620176.1 and NP_620177.1).

Immunogen

Peptide with sequence C-DQEKEDDGSESEE, from the C Terminus of the protein sequence according to NP_000910.2; NP_620121.1; NP_620176.1; NP_620177.1.

Please note the [peptide](#) is available for sale.

Purification and Storage

Purified from goat serum by ammonium sulphate precipitation followed by antigen affinity chromatography using the immunizing peptide.

Supplied at 0.5 mg/ml in Tris saline, 0.02% sodium azide, pH7.3 with 0.5% bovine serum albumin.

Aliquot and store at -20°C. Minimize freezing and thawing.

Applications Tested

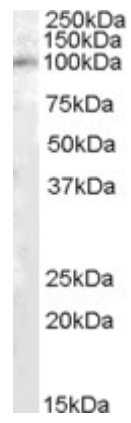
Peptide ELISA: antibody detection limit dilution 1:4000.

Western blot: Approx 100kDa band observed in Human Kidney lysates (calculated MW of 101kDa according to preproprotein NP_620121.1). Recommended concentration: 0.3-1µg/ml.

Species Reactivity

Tested: Human

Expected from sequence similarity: Human



EB08374 (1 μ g/ml) staining of Human Kidney lysate (35 μ g protein in RIPA buffer). Primary incubation was 1 hour.
Detected by chemiluminescence.