



UK Office

Everest Biotech Ltd

Cherwell Innovation Centre
77 Heyford Park
Upper Heyford
Oxfordshire
OX25 5HD
UK

Enquiries:

info@everestbiotech.com

Sales:

sales@everestbiotech.com

Tech support:

support@everestbiotech.com

Tel: +44 (0)1869 238326

Fax: +44 (0)1869 238327

US Office

Everest Biotech c/o Abcore

405 Maple Street, Suite A106
Ramona,
CA 92065
USA

Inquiries:

info@everestbiotech.com

Sales:

usasales@everestbiotech.com

Tech support:

support@everestbiotech.com

Tel: 888-320-4628 (toll-free)

Fax: 888-841-9041

www.everestbiotech.com

**Research Use Only. Not for
diagnostic or therapeutic use.**

EB05880-T - Goat Anti-PARK7 / DJ-1 Antibody - Trial

Size: 20µg specific antibody in 40µl



Target Protein

Principal Names: PARK7, DJ1, DJ-1, Parkinson disease (autosomal recessive, early onset) 7, oncogene DJ1, CTA-215D11.1, FLJ27376, FLJ34360, FLJ92274, Parkinson disease protein 7, protein DJ-1, epididymis secretory sperm binding protein Li 67p, HEL-S-67p

Official Symbol: PARK7

Accession Number(s): NP_009193.2

Human GeneID(s): [11315](#)

Non-Human GeneID(s): 57320 (mouse), 117287 (rat)

Important Comments: Reported variants (NP_001116849.1; NP_009193.2) represent the same protein.

Immunogen

Peptide with sequence C-AAQVKAPLVLKD, from the C Terminus of the protein sequence according to NP_009193.2.

Please note the [peptide](#) is available for sale.

Purification and Storage

Purified from goat serum by ammonium sulphate precipitation followed by antigen affinity chromatography using the immunizing peptide.

Supplied at 0.5 mg/ml in Tris saline, 0.02% sodium azide, pH7.3 with 0.5% bovine serum albumin.

Aliquot and store at -20°C. Minimize freezing and thawing.

Applications Tested

Peptide ELISA: antibody detection limit dilution 1:128000.

Western blot: Approx 24kDa band observed in lysates of cell lines HeLa and Jurkat and of Human Brain (Cerebellum, Hippocampus, Frontal Cortex) and rodent Brain lysates (calculated MW of 19.9kDa according to NP_001116849.1 and of NP_009193.2).

Recommended concentration: 0.05-0.1µg/ml. Primary incubation was 1 hour.

IHC: Paraffin embedded Human Testis. Recommended concentration: 7µg/ml.

Immunofluorescence: Strong expression of the protein seen around the nucleus.

Dividing cells appear to show enhanced expression. Recommended concentration: 5µg/ml.

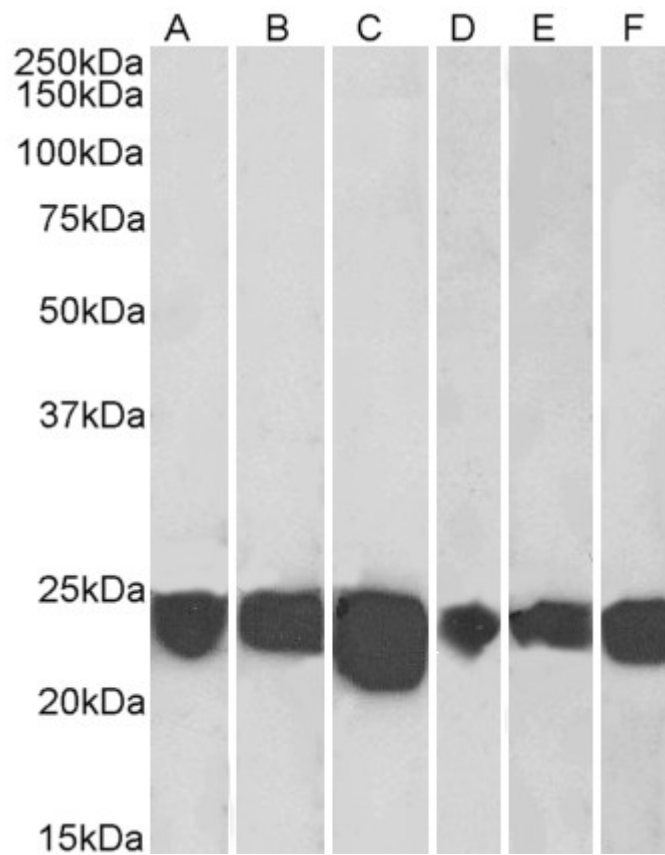
Species Reactivity

Tested: Human, Mouse, Rat

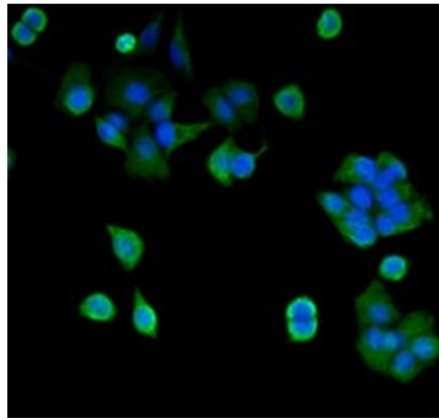
Expected from sequence similarity: Human, Mouse, Rat



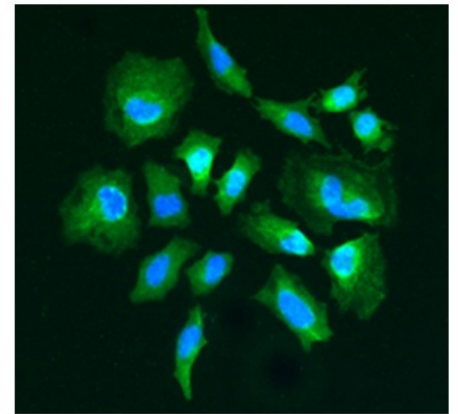
EB05880 (0.001 μ g/ml) staining of HeLa (A) and Jurkat (B) lysates (35 μ g protein in RIPA buffer). Detected by chemiluminescence.



EB05880 (0.001 μ g/ml) staining of Human Cerebellum (A), Human Frontal Cortex (B), Human Hippocampus (C) Mouse Fetal Brain (D), Mouse Brain (E) and Rat Brain (F) lysates (35 μ g protein in RIPA buffer). Detected by chemiluminescence.

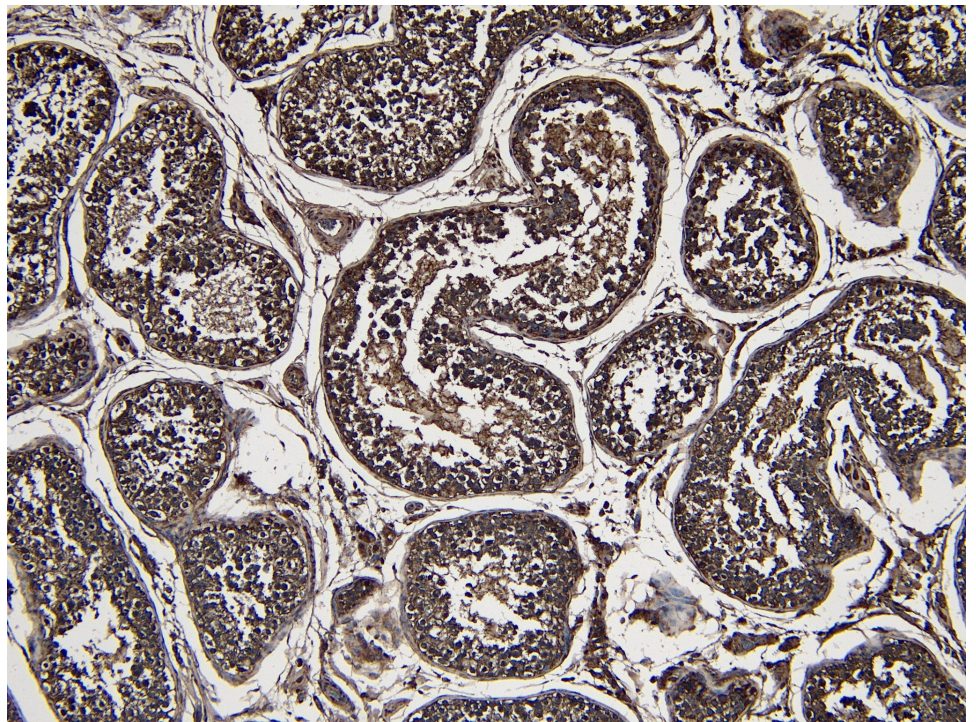


A

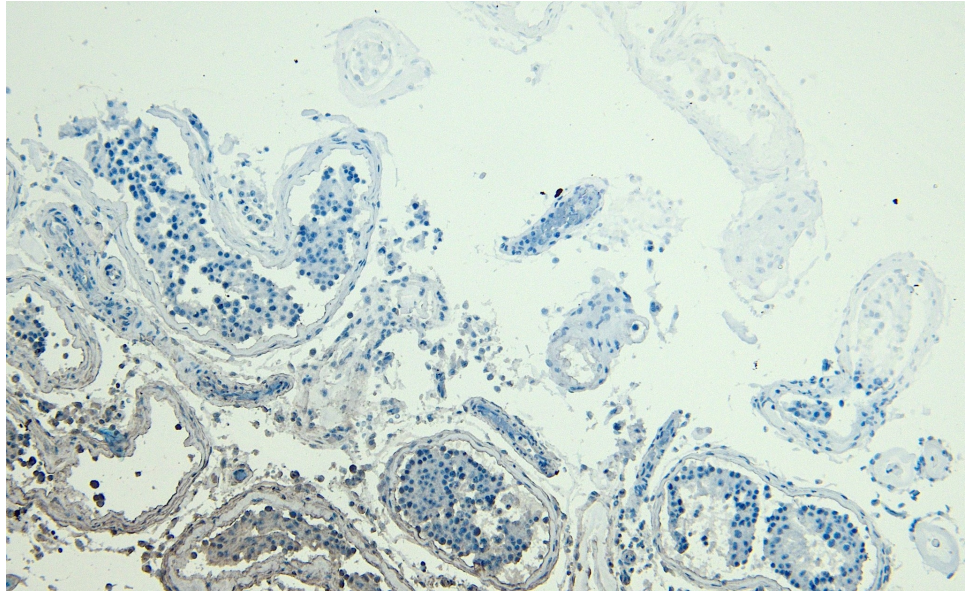


B

Immunofluorescence staining of MCF7 (A) and HeLa (B) cells with 5 μ g/ml EB05880 antibody. Detected with Rabbit anti-goat IgG-Alexafluor488 antibody at 1:1000. Nuclei Counterstained with DAPI.



EB05880 (7 μ g/ml) staining of paraffin embedded Human Testis. Heat induced antigen retrieval with citrate buffer pH 6, HRP-staining.



EB05880 Negative Control showing staining of paraffin embedded Human Testis, with no primary antibody.