



## UK Office

### Everest Biotech Ltd

Cherwell Innovation Centre  
77 Heyford Park  
Upper Heyford  
Oxfordshire  
OX25 5HD  
UK

Enquiries:

[info@everestbiotech.com](mailto:info@everestbiotech.com)

Sales:

[sales@everestbiotech.com](mailto:sales@everestbiotech.com)

Tech support:

[support@everestbiotech.com](mailto:support@everestbiotech.com)

Tel: +44 (0)1869 238326

[www.everestbiotech.com](http://www.everestbiotech.com)

**Research Use Only. Not for  
diagnostic or therapeutic use.**

## EB07098 - Goat Anti-PARP2 Antibody

Size: 100µg specific antibody in 200µl



### Target Protein

**Principal Names:** PARP2, poly (ADP-ribose) polymerase family, member 2, HGNC:272, ADPRT2, ADPRTL2, ADPRTL3, PARP-2, pADPRT-2, ADP-ribosyltransferase (NAD poly ADP-ribose polymerase)-like 2, poly (ADP-ribosyl) transferase-like 2, poly(ADP-ribose) synthetase

**Official Symbol:** PARP2

**Accession Number(s):** NP\_005475.1

**Human GeneID(s):** [10038](#)

### Immunogen

Peptide with sequence C-LDLFEVEKDGEKE, from the internal region of the protein sequence according to NP\_005475.1.

Please note the [peptide](#) is available for sale.

### Purification and Storage

Purified from goat serum by ammonium sulphate precipitation followed by antigen affinity chromatography using the immunizing peptide.

Supplied at 0.5 mg/ml in Tris saline, 0.02% sodium azide, pH7.3 with 0.5% bovine serum albumin.

Aliquot and store at -20°C. Minimize freezing and thawing.

### Applications Tested

**Peptide ELISA:** antibody detection limit dilution 1:8000.

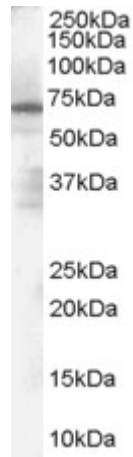
**Western blot:** Approx 70kDa band observed in Human Spleen lysates (calculated MW of 60.8kDa according to NP\_005475.1. Recommended concentration: 1-3µg/ml.

**IHC:** Paraffin embedded Human Skin and Adrenal Gland. Recommended concentration: 5µg/ml.

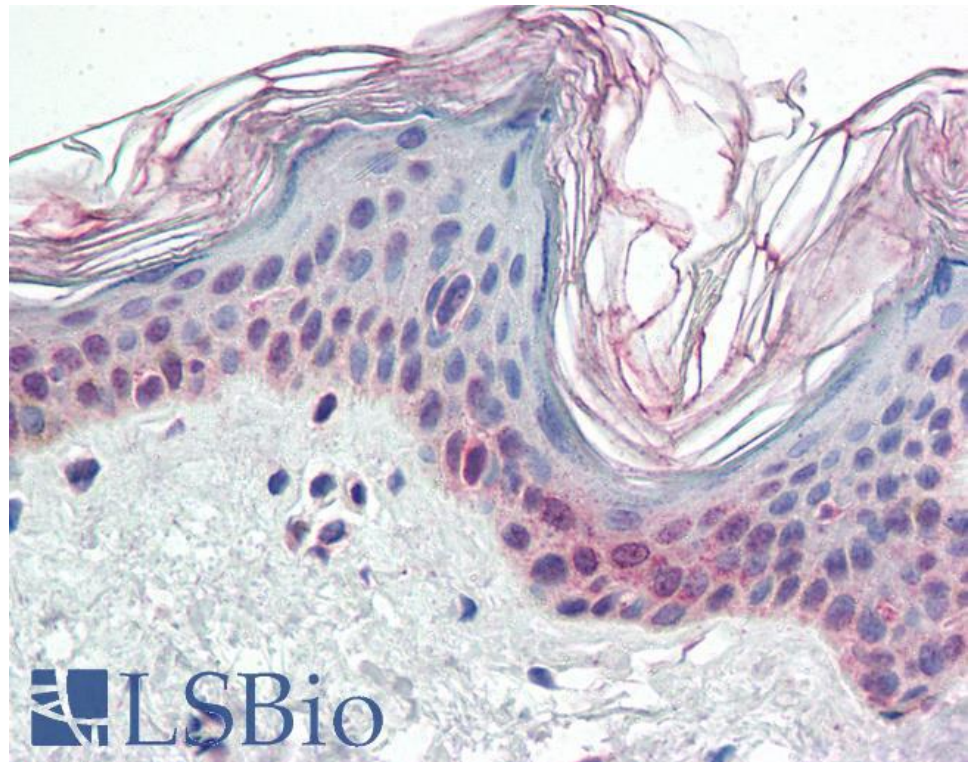
### Species Reactivity

**Tested:** Human

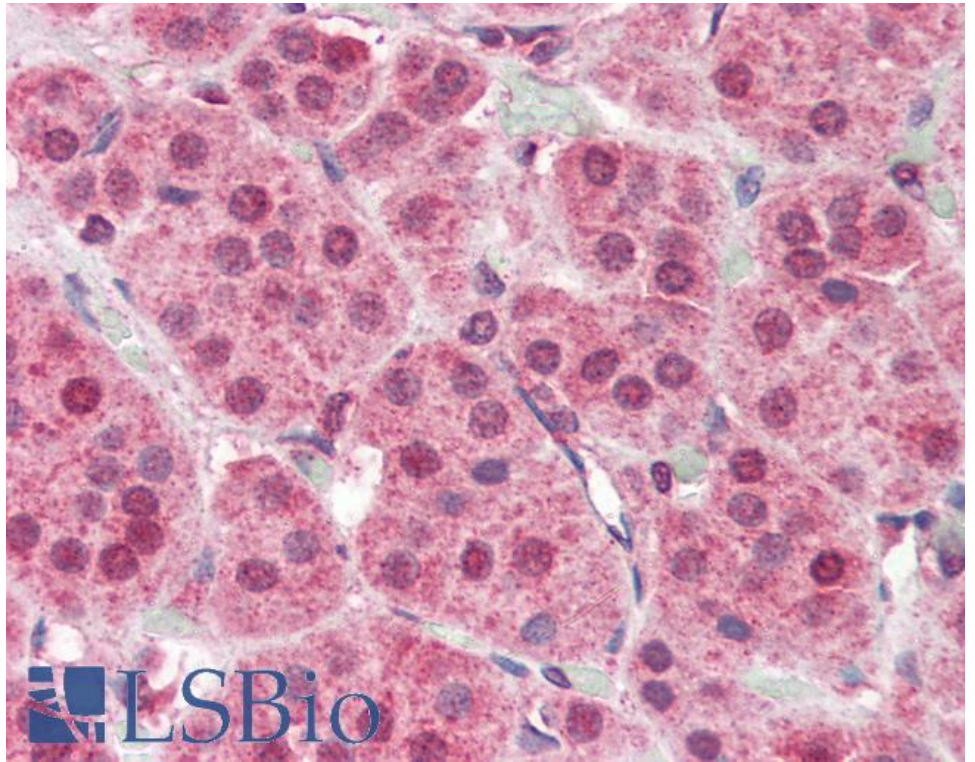
**Expected from sequence similarity:** Human



EB07098 (1µg/ml) staining of Human Spleen Lysate (35µg protein in RIPA buffer). Primary incubation was 1 hour. Detected by chemiluminescence.



EB07098 (5µg/ml) staining of paraffin embedded Human Skin. Steamed antigen retrieval with citrate buffer pH 6, AP-staining.



EB07098 (5µg/ml) staining of paraffin embedded Human Adrenal Gland. Steamed antigen retrieval with citrate buffer pH 6, AP-staining.