



## UK Office

### Everest Biotech Ltd

Cherwell Innovation Centre  
77 Heyford Park  
Upper Heyford  
Oxfordshire  
OX25 5HD  
UK

Enquiries:

[info@everestbiotech.com](mailto:info@everestbiotech.com)

Sales:

[sales@everestbiotech.com](mailto:sales@everestbiotech.com)

Tech support:

[support@everestbiotech.com](mailto:support@everestbiotech.com)

Tel: +44 (0)1869 238326

Fax: +44 (0)1869 238327

## US Office

### Everest Biotech c/o Abcore

405 Maple Street, Suite A106  
Ramona,  
CA 92065  
USA

Inquiries:

[info@everestbiotech.com](mailto:info@everestbiotech.com)

Sales:

[usasales@everestbiotech.com](mailto:usasales@everestbiotech.com)

Tech support:

[support@everestbiotech.com](mailto:support@everestbiotech.com)

Tel: 888-320-4628 (toll-free)

Fax: 888-841-9041

[www.everestbiotech.com](http://www.everestbiotech.com)

**Research Use Only. Not for  
diagnostic or therapeutic use.**

## EB09029 - Goat Anti-PARP3 Antibody

Size: 100µg specific antibody in 200µl



### Target Protein

**Principal Names:** PARP3, poly (ADP-ribose) polymerase family, member 3, ADPRT3, ADPRTL2, ADPRTL3, IRT1, hPARP-3, pADPRT-3, ADP-ribosyltransferase (NAD<sup>+</sup>, poly (ADP-ribose) polymerase)-like 2, ADP-ribosyltransferase (NAD<sup>+</sup>, poly (ADP-ribose) polymerase)-like 3, NAD<sup>+</sup> ADP-ribosyltransferase 3, poly(ADP-ribose) polymerase 3, poly(ADP-ribose) synthetase-3

**Official Symbol:** PARP3

**Accession Number(s):** NP\_001003931.2; NP\_001003935.2

**Human GeneID(s):** [10039](#)

**Important Comments:** This antibody is expected to recognize both reported isoforms (NP\_001003931.2; NP\_001003935.2).

### Immunogen

Peptide with sequence YEDYNCTLNQTNIE, from the internal region of the protein sequence according to NP\_001003931.2; NP\_001003935.2.

Please note the [peptide](#) is available for sale.

### Purification and Storage

Purified from goat serum by ammonium sulphate precipitation followed by antigen affinity chromatography using the immunizing peptide.

Supplied at 0.5 mg/ml in Tris saline, 0.02% sodium azide, pH7.3 with 0.5% bovine serum albumin.

Aliquot and store at -20°C. Minimize freezing and thawing.

### Applications Tested

**Peptide ELISA:** antibody detection limit dilution 1:2000.

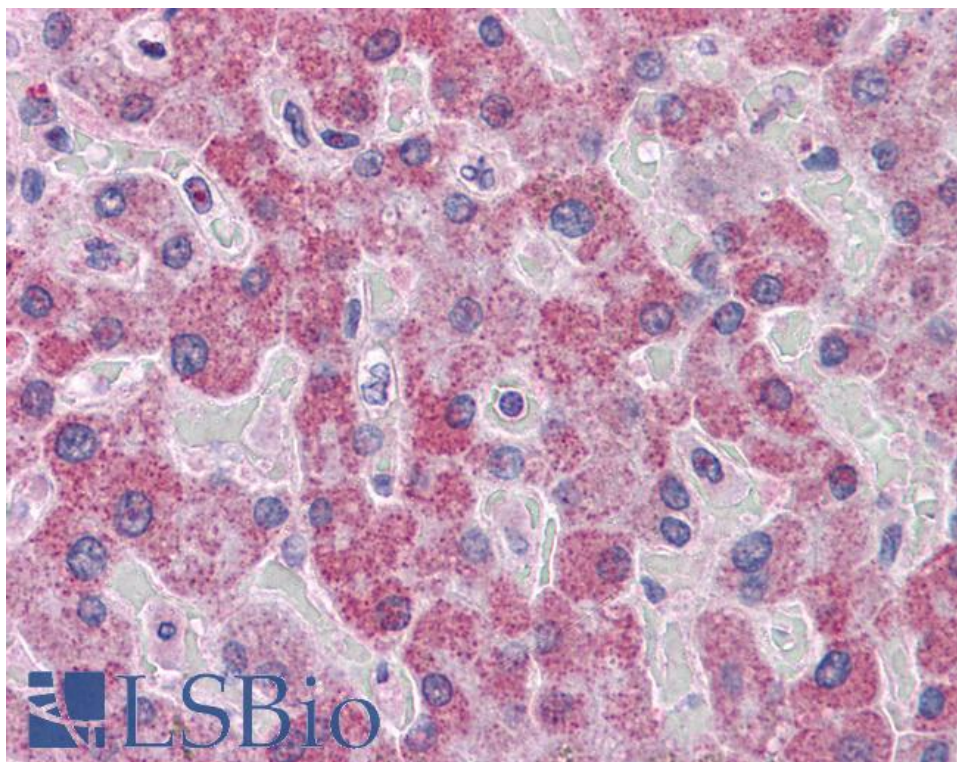
**Western blot:** Preliminary experiments in lysates of cell lines Daudi, HeLa and HepG2 gave no specific signal but low background (at antibody concentration up to 1µg/ml).

**IHC:** Paraffin embedded Human Liver and Kidney. Recommended concentration: 3.75µg/ml.

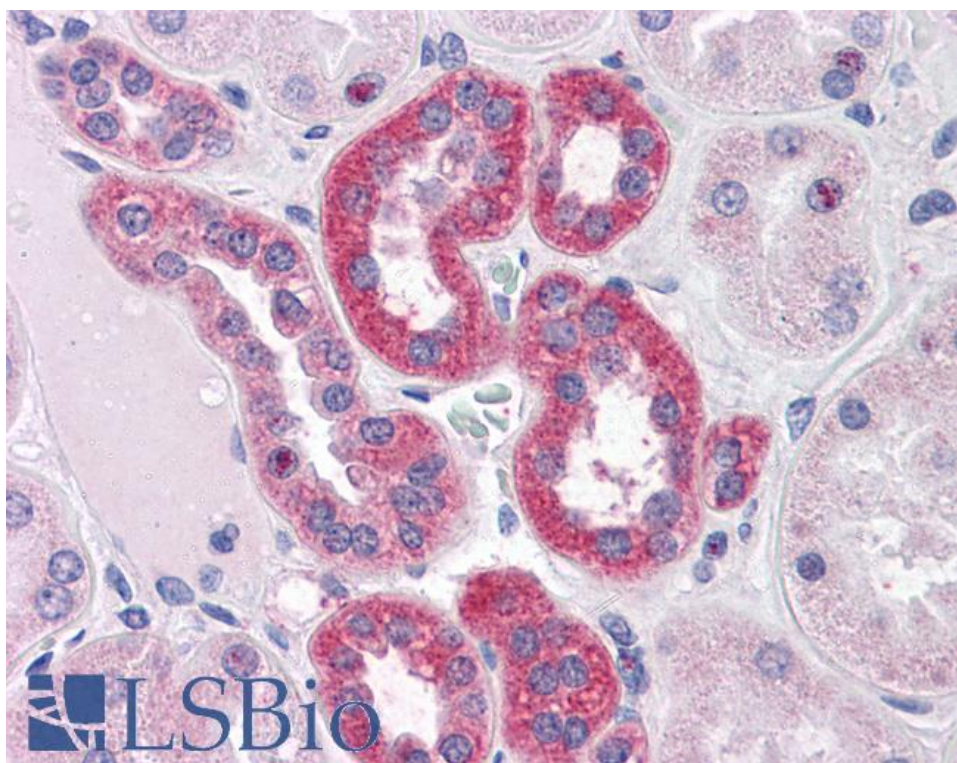
### Species Reactivity

**Tested:** Human

**Expected from sequence similarity:** Human



EB09029 (3.75µg/ml) staining of paraffin embedded Human Liver. Steamed antigen retrieval with citrate buffer pH 6, AP-staining.



EB09029 (3.75µg/ml) staining of paraffin embedded Human Kidney. Steamed antigen retrieval with citrate buffer pH 6, AP-staining.